

Application No. R-14620

Permit No. 70550

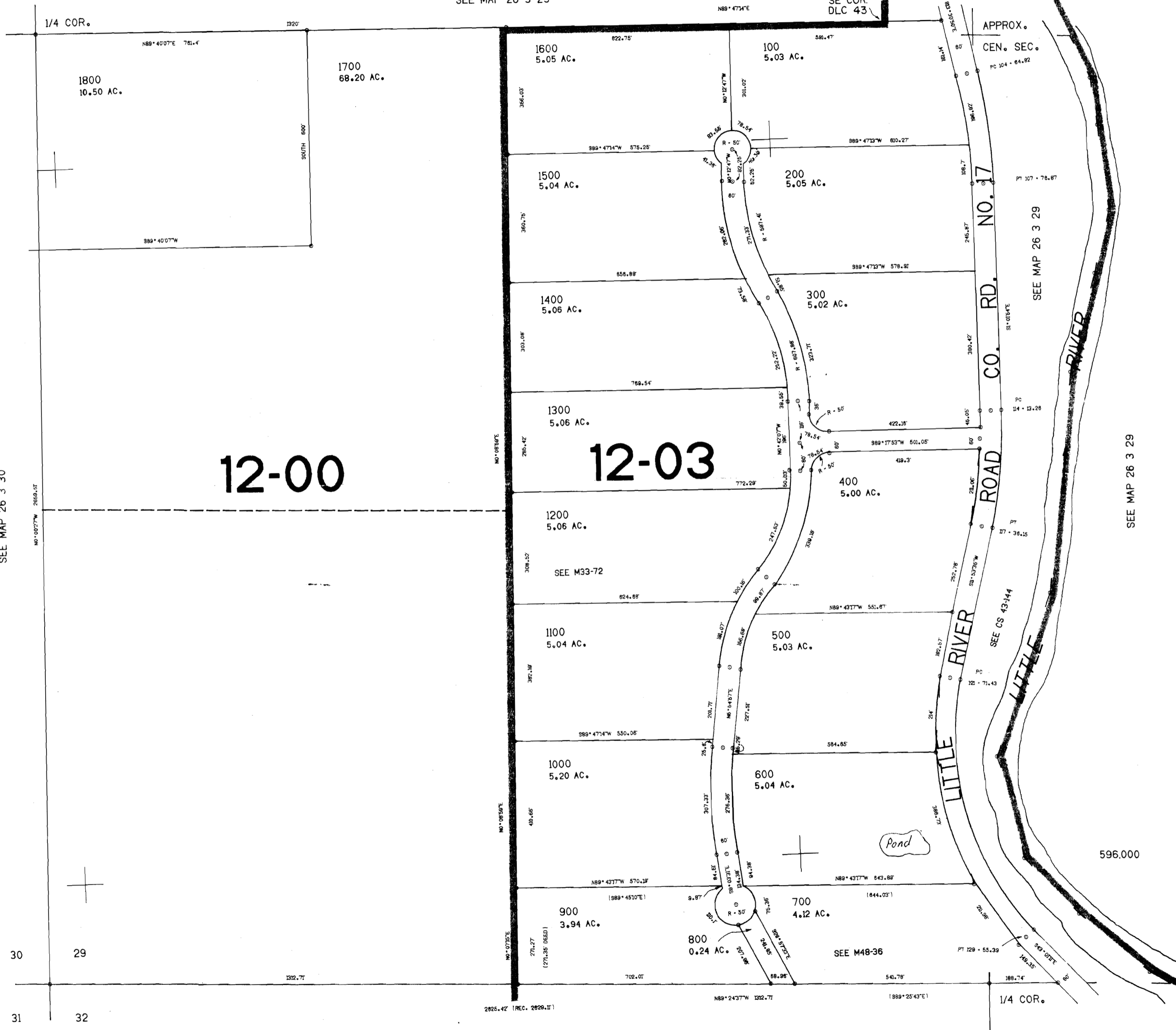
26 3 29C

SW1/4 SEC. 29 T.26S. R.3W. W.M.
DOUGLAS COUNTY

1"=200'

SEE MAP 26 3 29

THIS MAP WAS PREPARED FOR
ASSESSMENT PURPOSE ONLY.



12-00

12-03

SEE MAP 26 3 30

SEE MAP 26 3 29

30 29

31 32

SEE MAP 26 3 32

1.313.000

26 3 29C

No Final Proof Map available

No Permit Map available