

N. W.M.
Y

Application No. R-76627 Permit No.

IS 9 6

This map was prepared for
assessment purpose only.

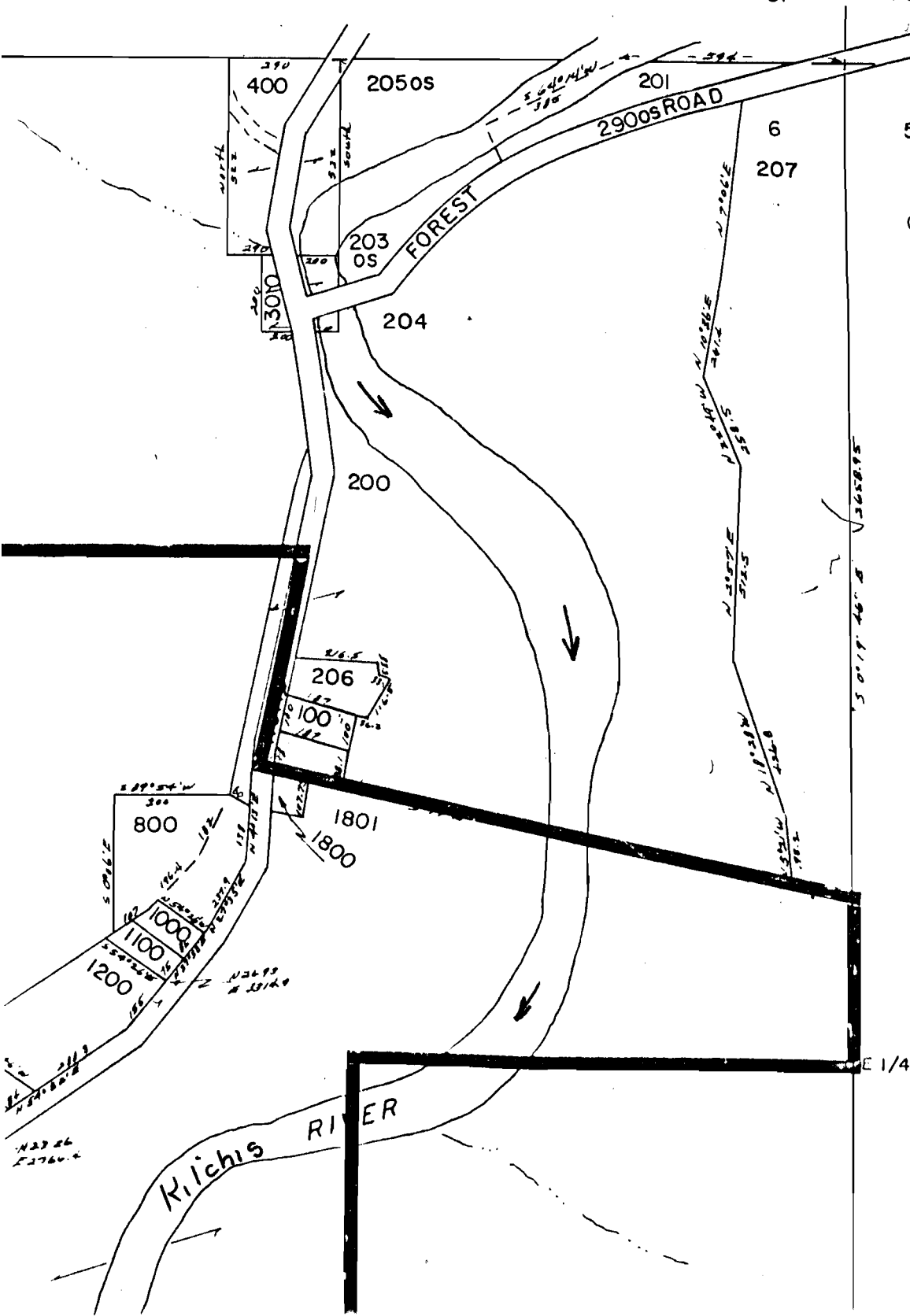
70557

31

32

JAN 4 1995

WATER DIVISION
SALMON, OREGON



CANCELLED

- 202
- 900
- 2200
- 2500
- 2800
- 1900
- 1700
- 2700
- 2001

SEE MAP IS 9

E 1/4

No Final Proof Map available

No Permit Map available