

SECTION 17 T.24S. R.5W. W.M.
 DOUGLAS COUNTY

THIS MAP WAS PREPARED FOR
 ASSESSMENT PURPOSE ONLY.

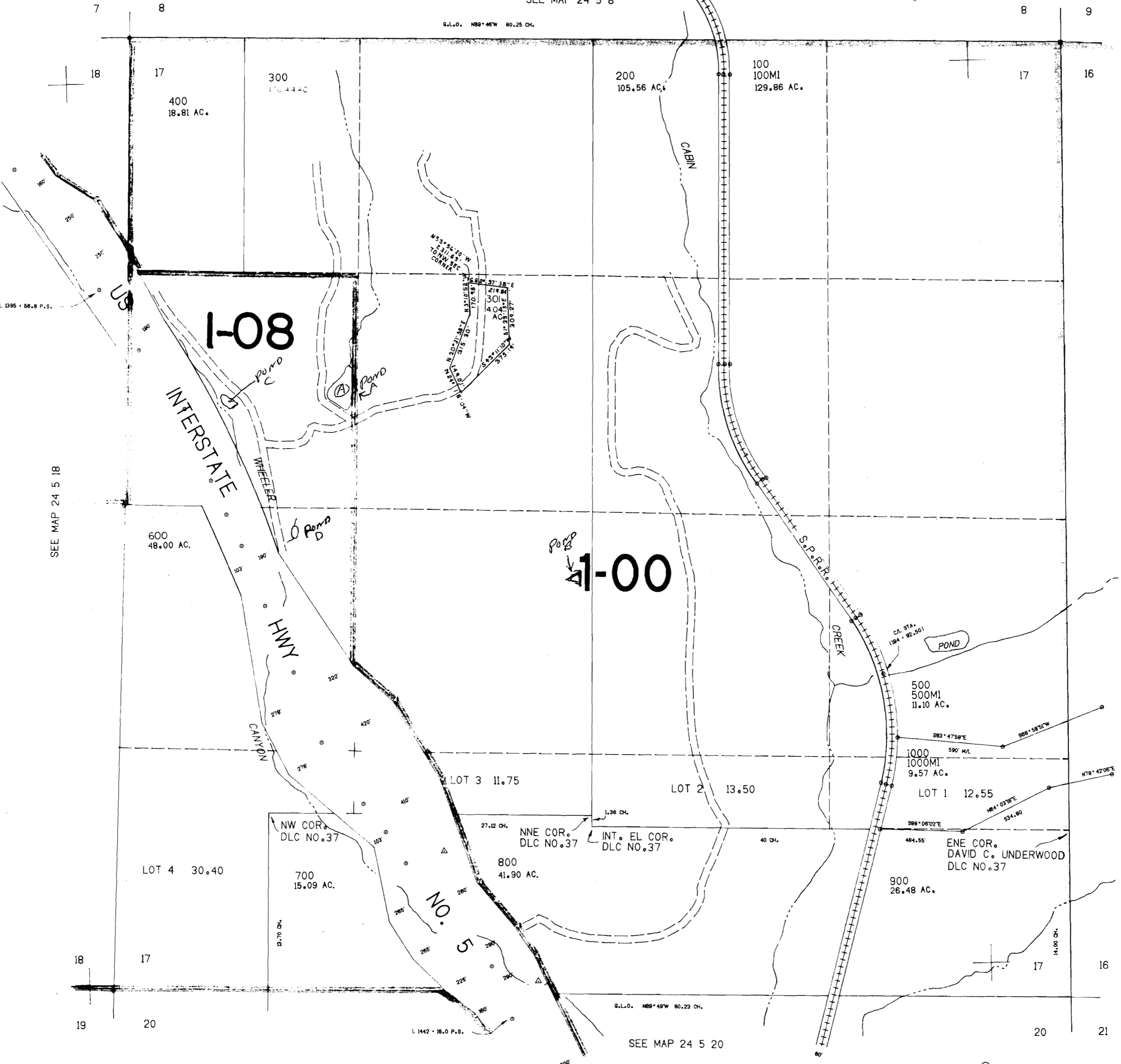
1"=400'

JAN - 3 1995
 WATER DIVISION
 SALEM, OREGON

CERTIFICATE NO. 70564

SEE MAP 24 5 8

G.L.O. N89°46'W 80.25 CH.



SEE MAP 24 5 18

SEE MAP 24 5 16

672.000

G.L.O. N89°49'W 80.23 CH.

SEE MAP 24 5 20

L 1442 - 18.0 P.S.

1.255.000

No Final Proof Map available

No Permit Map available