

Application No R-76658
Permit No.

WJ Road

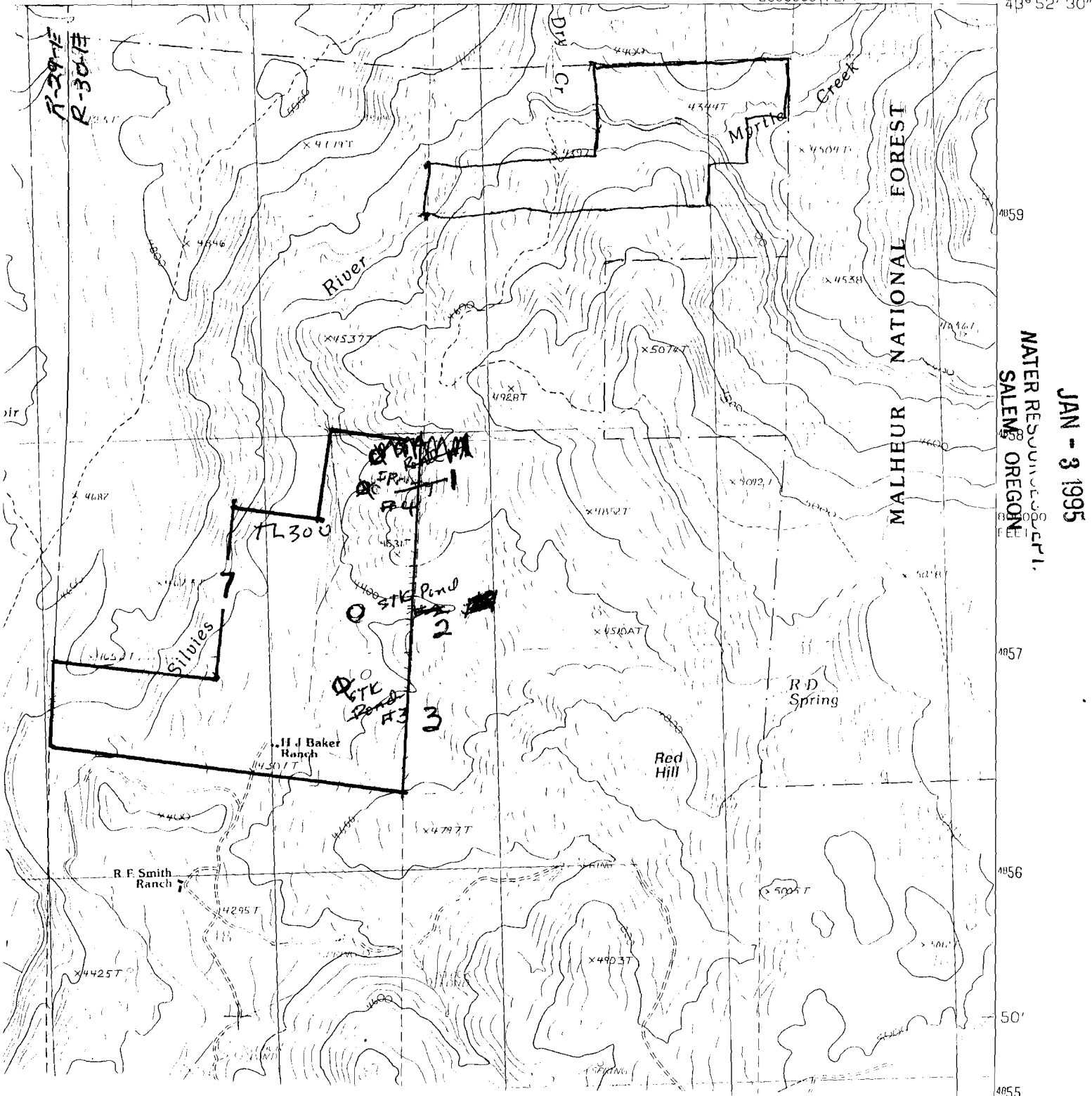
1990 series

UNIT NUMBER 70586

LANDING CREEK QUADRANGLE
OREGON-HARNEY CO.
7.5 MINUTE SERIES (TOPOGRAPHIC)

T-20-S

325 10' 327 328 2360000 FEET 329 119° 07' 30" 43° 52' 30"



WATER RESOURCES DIVISION
SALEM, OREGON

JAN - 3 1995

RECEIVED

No Final Proof Map available

No Permit Map available