

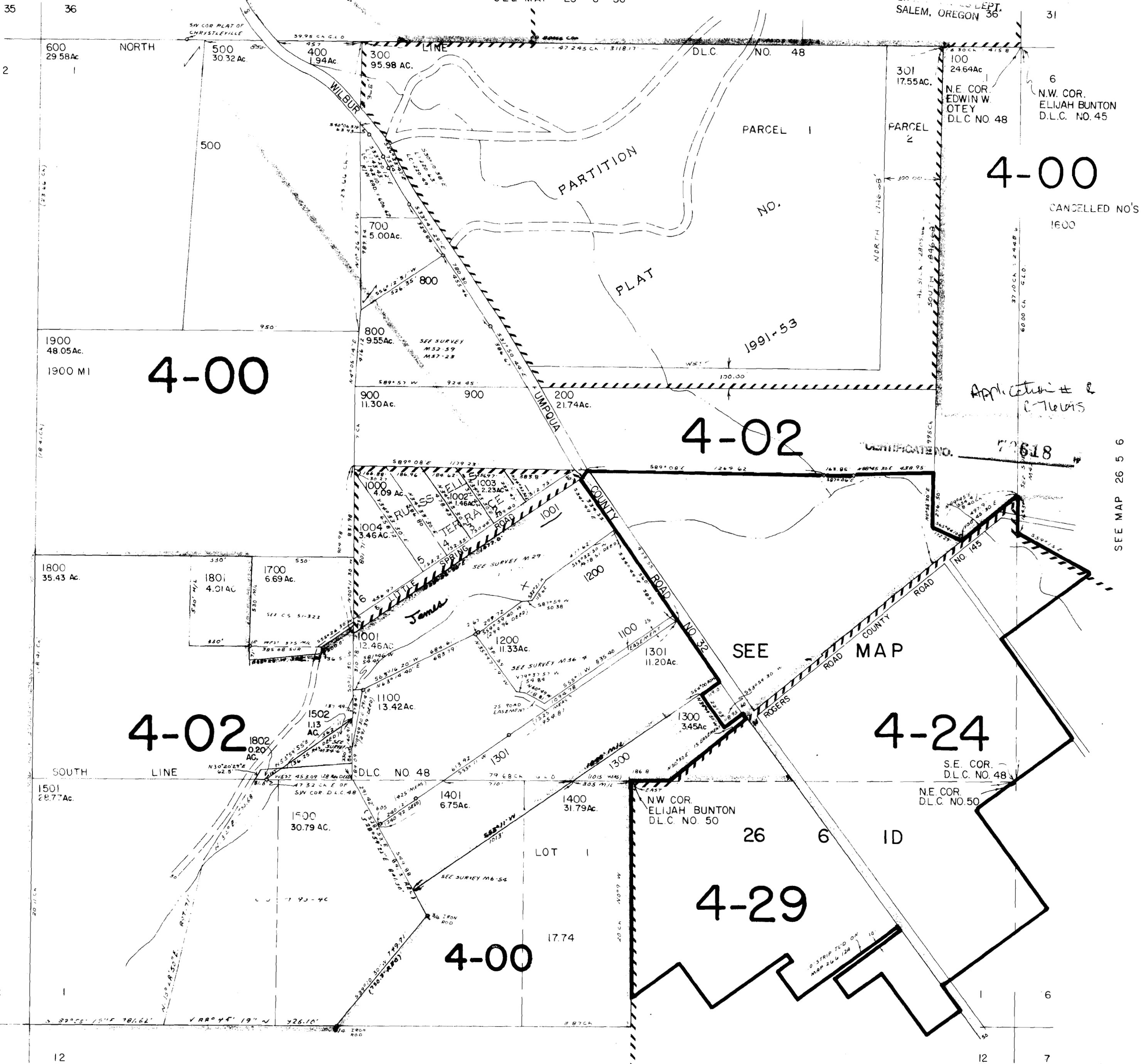
SECTION 1 T.26S. R.6W. W.M.
DOUGLAS COUNTY

1" = 400'

REVISED ON
5-20-92

DEC 17 1994
WATER RESOURCES DEPT.
SALEM, OREGON 36

SEE MAP 25 6 36



4-00

4-00

4-02

4-02

4-24

4-29

4-00

6
N.W. COR.
ELIJAH BUNTON
D.L.C. NO. 45

N.E. COR.
EDWIN W.
OTEY
D.L.C. NO. 48

N.W. COR.
ELIJAH BUNTON
D.L.C. NO. 50

S.E. COR.
D.L.C. NO. 48

N.E. COR.
D.L.C. NO. 50

Application # 2
C-7618

CERTIFICATE NO. 77618

SEE MAP

SEE MAP 26 6 2

SEE MAP 26 5 6

SEE MAP 26 6 12

SEE MAP 26 6 12A

No Final Proof Map available

No Permit Map available