

SECTION 12 T1S R4W W.M.

WASHINGTON COUNTY OREGON

SCALE 1" = 400'

70621

Application No. *R 76498*

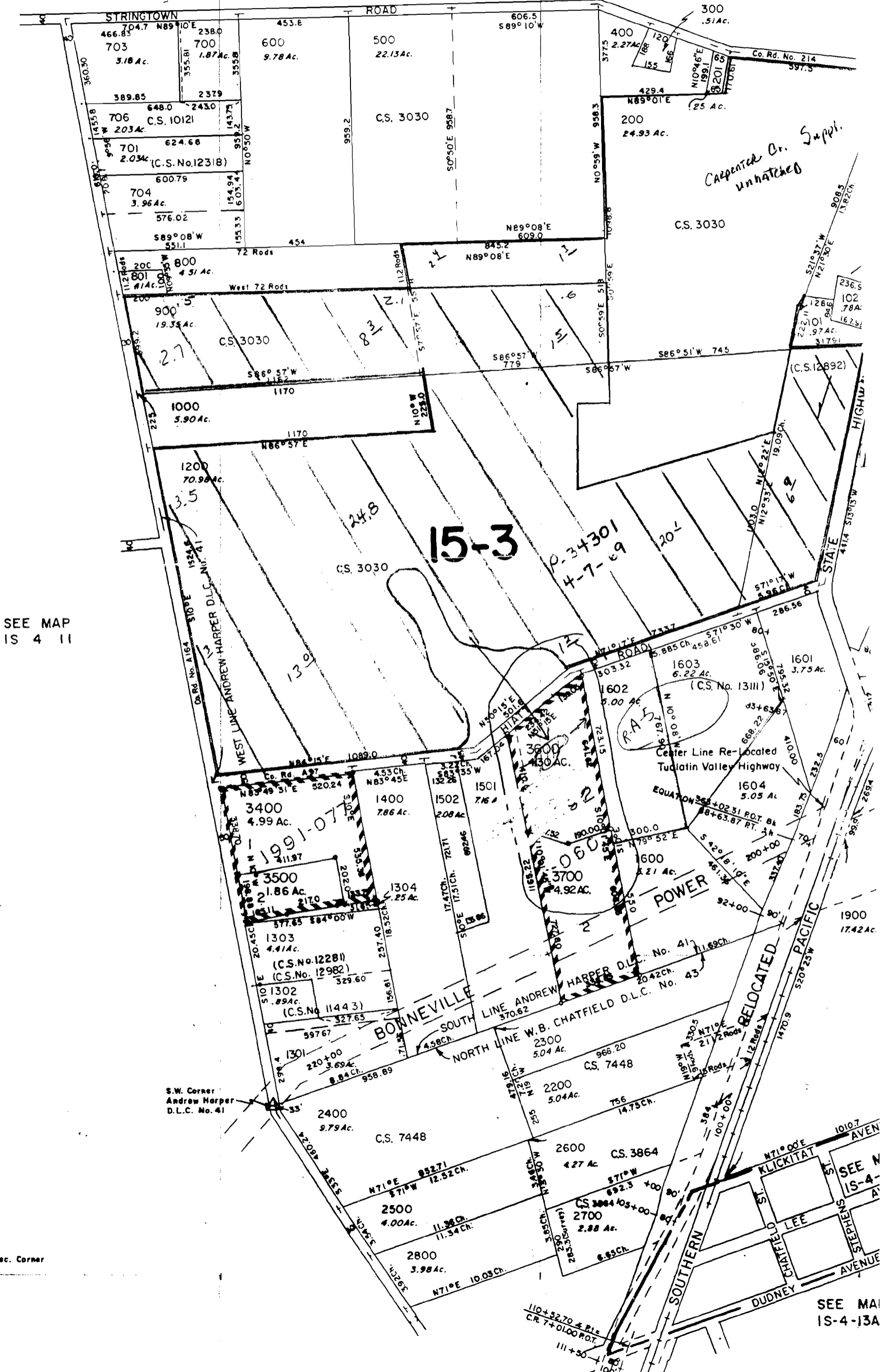
Permit No.

SEE MAP IS 4 1

*HW 58*

Approx. Sec. Corner

12



SEE MAP IS 4 11

12

Approx. Sec. Corner

13

SEE MAP IS-4-13A

No Final Proof Map available

No Permit Map available