

SECTION 27 T.27S. R.7W. W.M.
DOUGLAS COUNTY

Application No. R-70699
Permit No.

REVISED ON
1-29-93

27 7 27

THIS MAP WAS PREPARED FOR
ASSESSMENT PURPOSE ONLY.

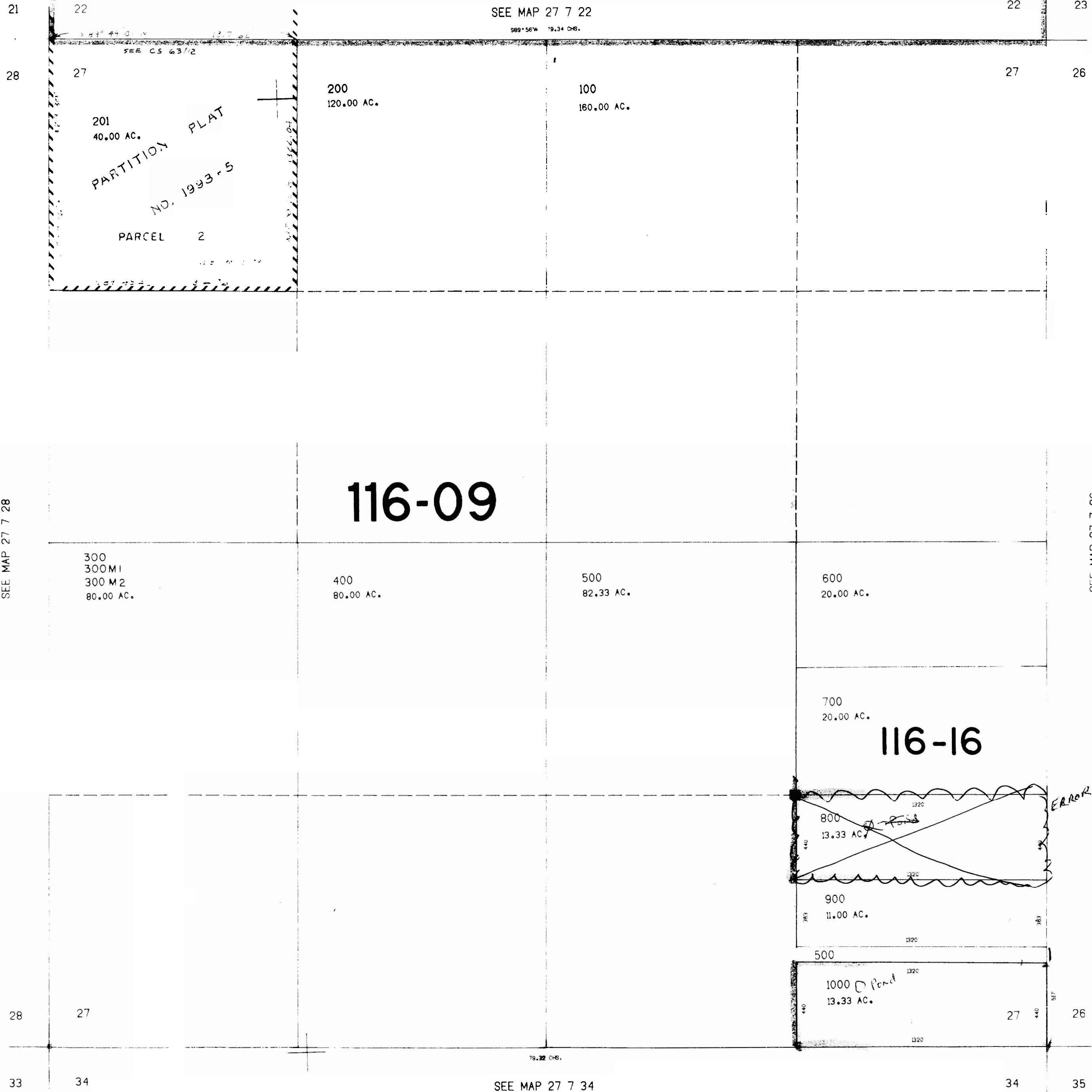
1"=400'

CERTIFICATE NO. 70622

DEC 30 1994
WATER RESOURCES DIV.
SALEM, OREGON

SEE MAP 27 7 22

S89°56'W 19.34 CHS.



SEE MAP 27 7 28

SEE MAP 27 7 26

116-09

116-16

568.000

SEE MAP 27 7 34

1,195,000

27 7 27

No Final Proof Map available

No Permit Map available