

druff

SECTION 23 T.25S. R.6W. W.M.
DOUGLAS COUNTY

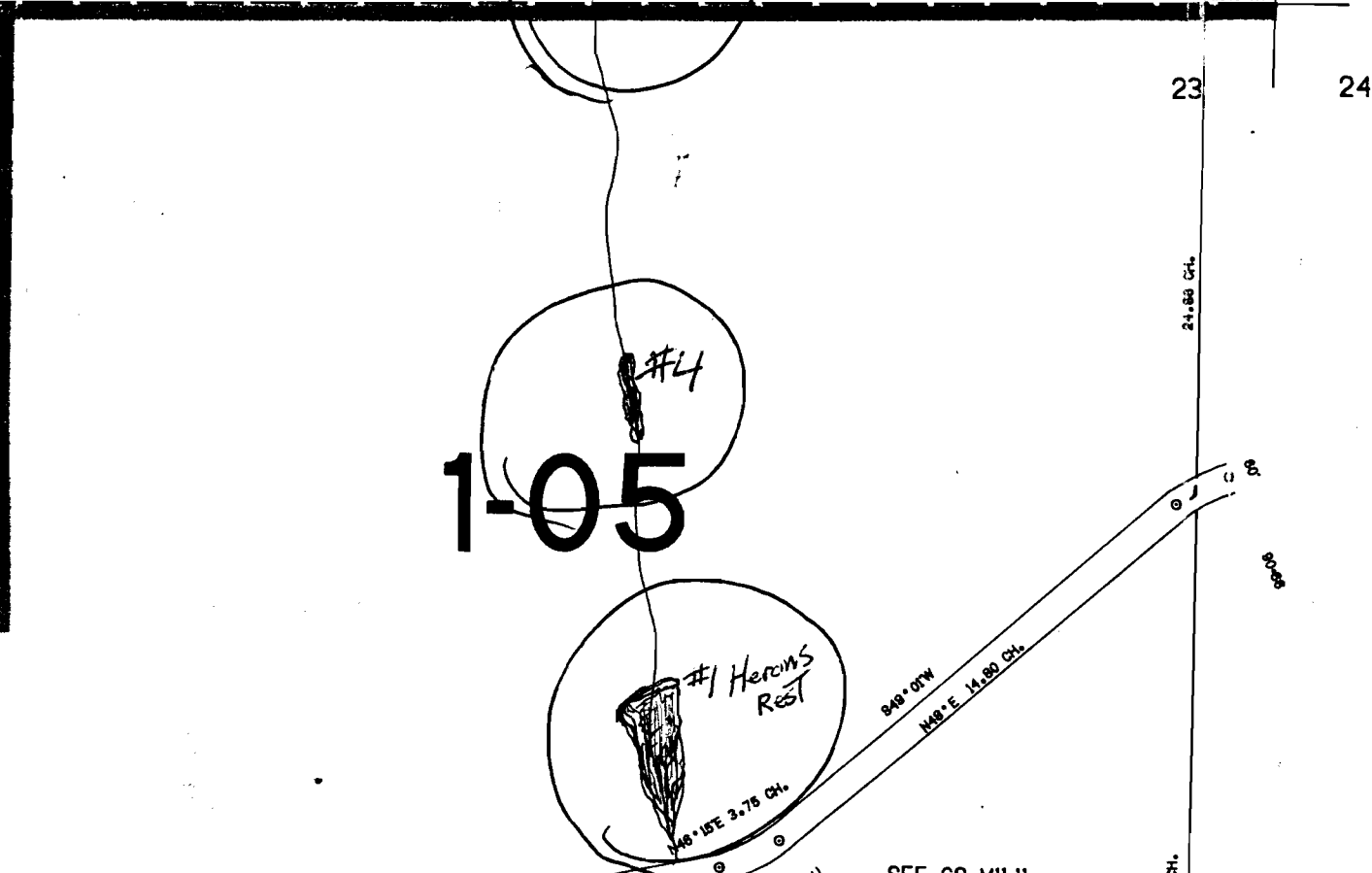
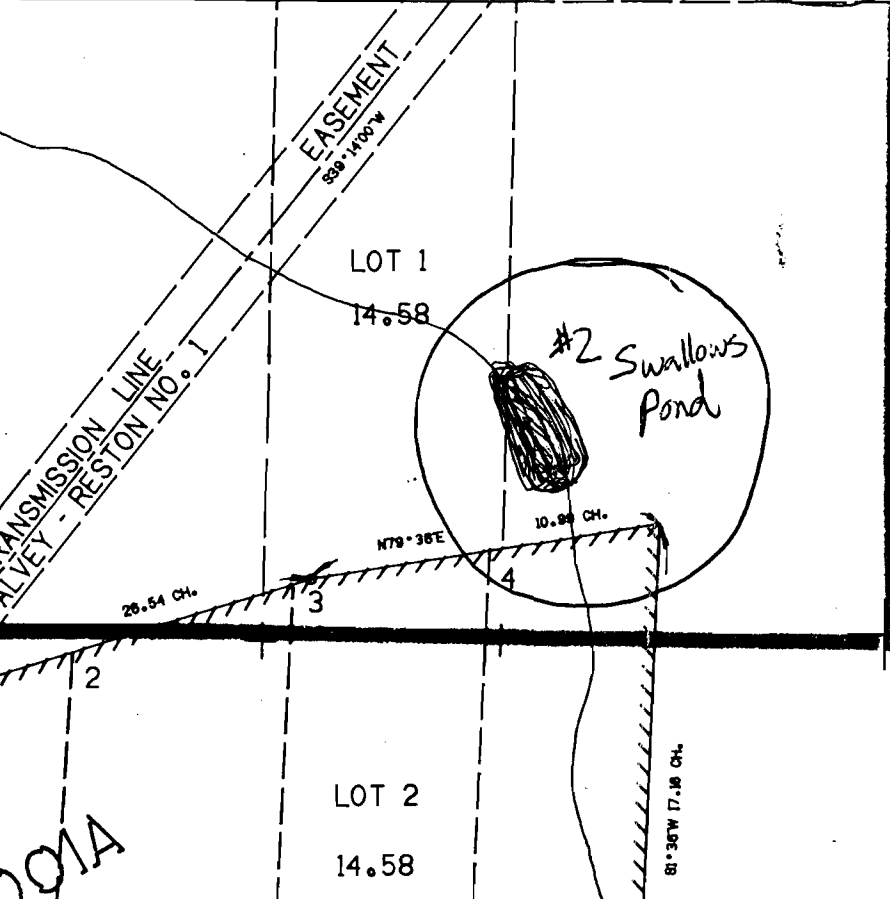
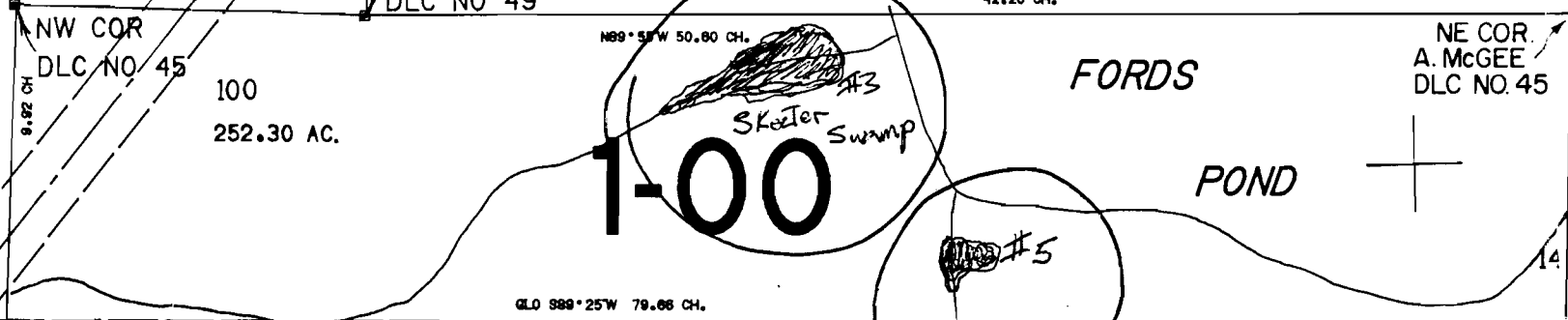
REVISED ON
4-20-94

25 6 23

2029

Application No. *R-76706*
Permit No.

SEE MAP 25 6 14 SSW COR JOSEPH CLYNE
DLC NO 49



No Final Proof Map available

No Permit Map available