

SECTION 14 T.26S. R.7W. W.M.
DOUGLAS COUNTY

REVISED ON
4-28-94

26 7 14

THIS MAP WAS PREPARED FOR
ASSESSMENT PURPOSE ONLY.

CERTIFICATE NO. **70647**

1" = 400'

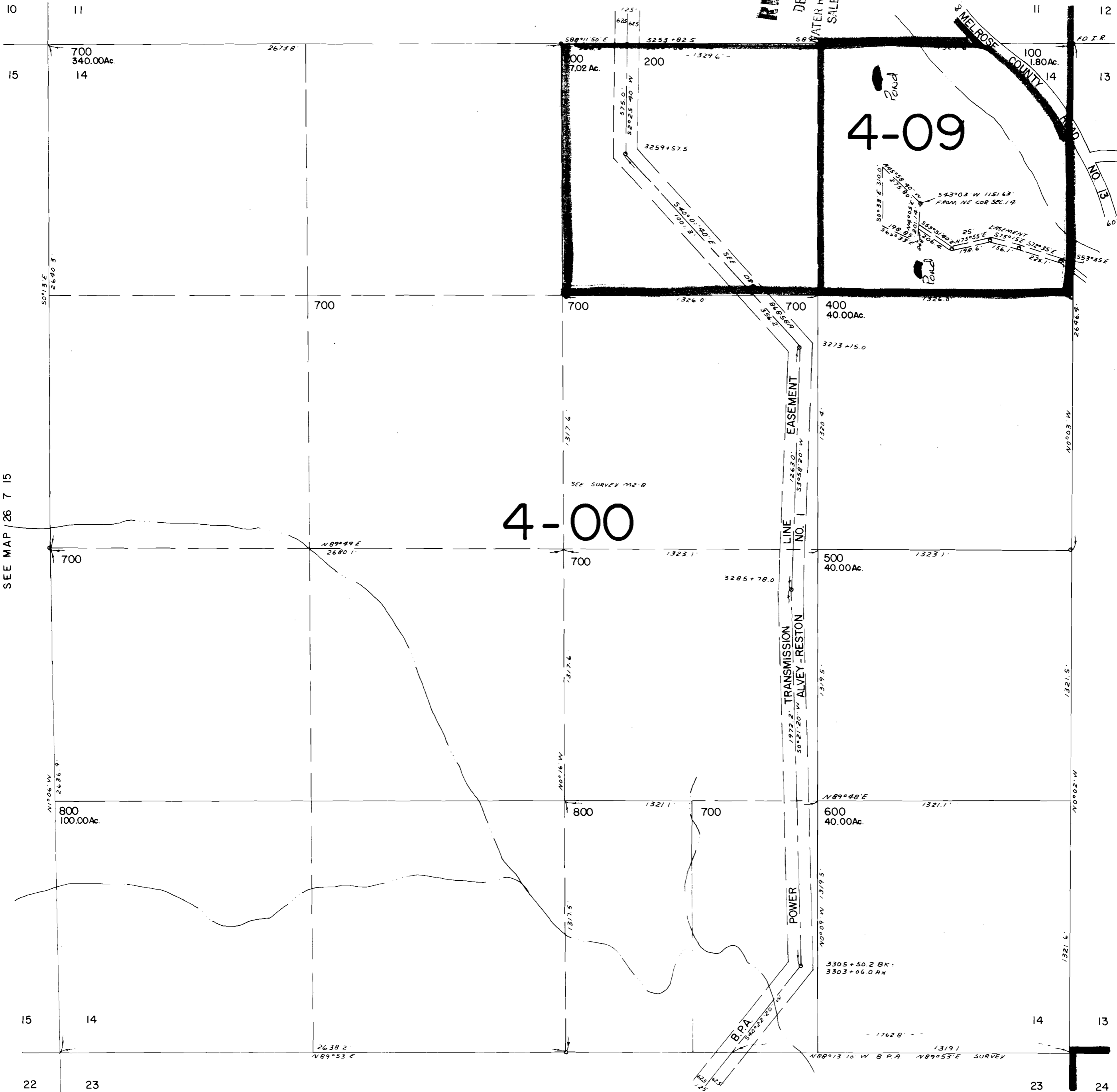
SEE MAP 26 7 11

RECEIVED

DEC 3 1994

WATER RESOURCES
SALEM, OREGON

Application No. *R-76725*
Permit No.



CANCELLED NO'S
300

SEE MAP 26 7 13B

SEE MAP 26 7 13C

SEE MAP 26 7 23

26 7 14

No Final Proof Map available

No Permit Map available