

ASSESSMENT & TAX FILMED 11/08/94

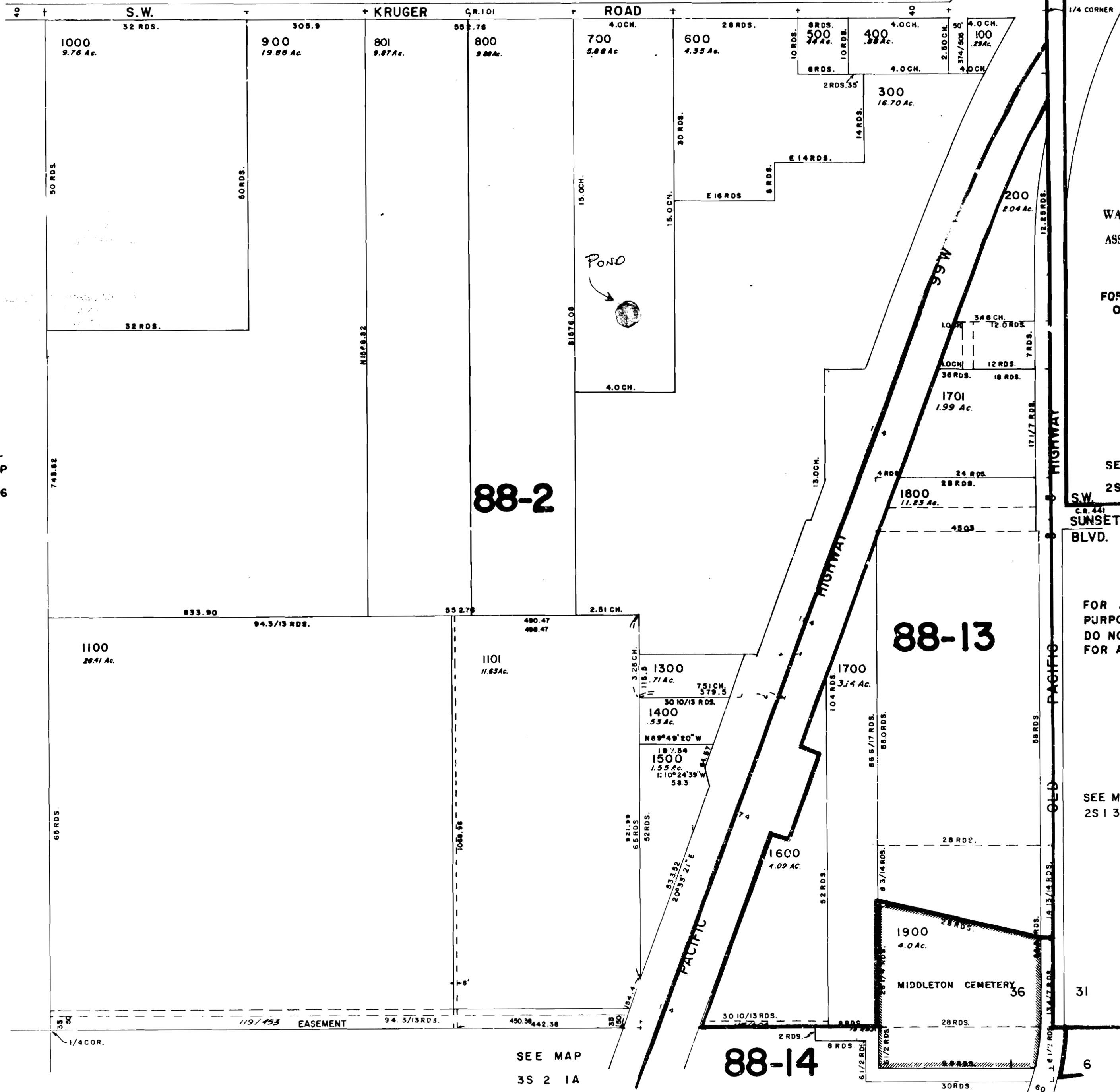
SE 1/4 SECTION 36 T2S R2W W.M

2 S 2 36D

WASHINGTON COUNTY OREGON

SCALE 1"=200'

SEE MAP
2S 2 36



CANCELLED TAX LOTS
2000, 1200, 1102,

Application No. 2-1073
Permit No.

CERTIFICATE NO. 70050

WASHINGTON COUNTY
DEPARTMENT OF
ASSESSMENT & TAXATION

DEC 29 1994

FOR ASSESSMENT PURPOSES
ONLY - DO NOT RELY ON
FOR OTHER USE

SEE MAP
2S 2 36

SEE MAP
2S 1 31C

S.W.
C.R. 241
SUNSET
BLVD.

FOR ASSESSMENT
PURPOSES ONLY
DO NOT RELY ON
FOR ANY OTHER USE

SEE MAP
2S 1 31C

SEE MAP
3S 2 1A

2S 2 36D

No Final Proof Map available

No Permit Map available