

SECTION 27 T.23S. R.5W. W.M.
DOUGLAS COUNTY

REVISED ON
6-1-94

THIS MAP WAS PREPARED FOR
ASSESSMENT PURPOSE ONLY.

70651

1"=400'

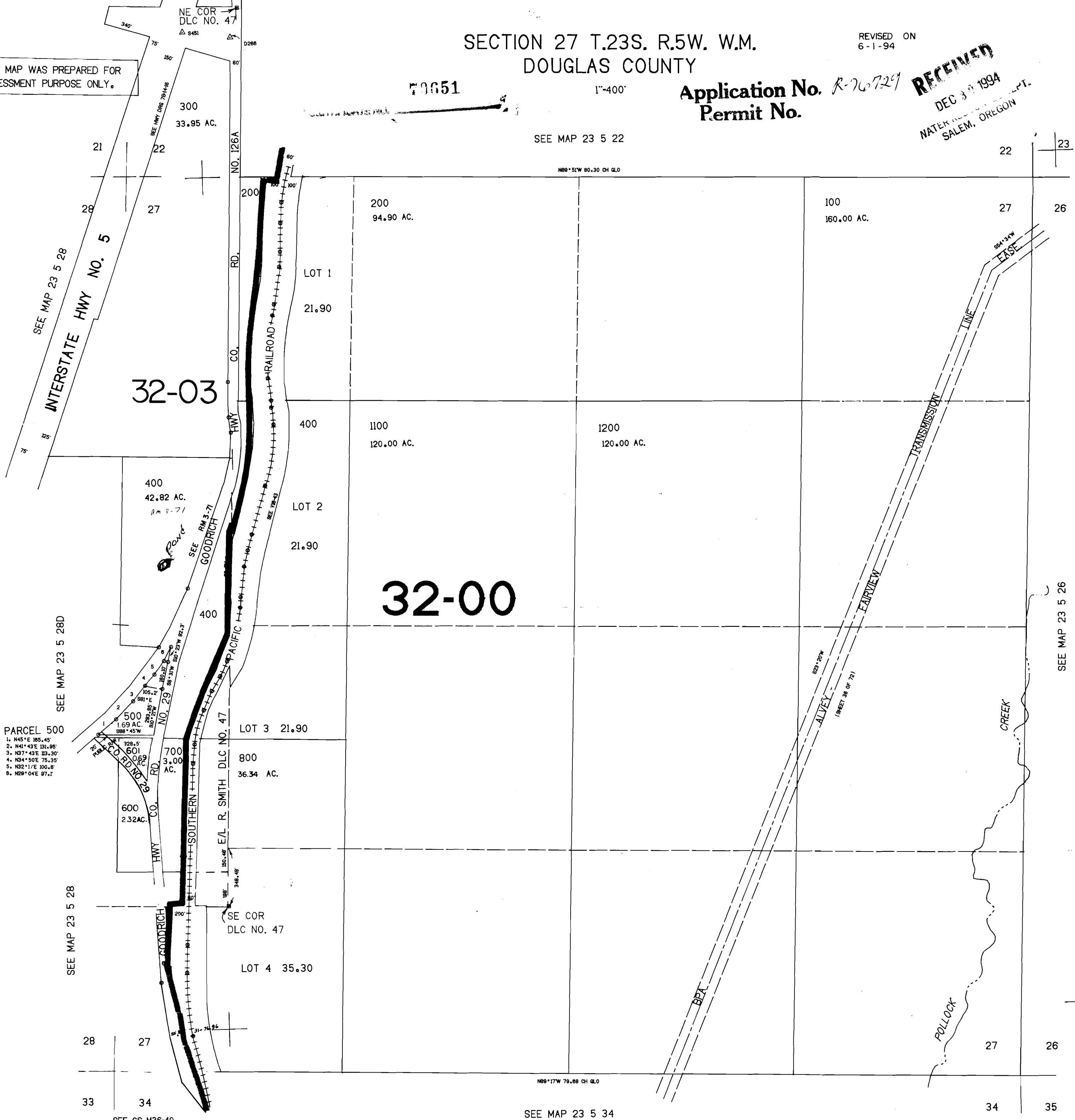
Application No. R-76721
Permit No.

RECEIVED
DEC 30 1994
WATER RESOURCES DEPT.
SALEM, OREGON

SEE MAP 23 5 22

N89°51'W 80.30 CH GLO

CANCELLED NO'S
900 1000



PARCEL 500
 1. N45°E 185.45'
 2. N41°43'E 131.95'
 3. N37°43'E 113.30'
 4. N34°50'E 75.35'
 5. N21°17'E 100.8'
 6. N28°04'E 97.1'

32-03

32-00

SEE MAP 23 5 28D

SEE MAP 23 5 28

SEE CS M36-40

SEE MAP 23 5 34

SEE MAP 23 5 26

693.000

1.265.000

No Final Proof Map available

No Permit Map available