

RECEIVED

DEC 30 1994

WATER RESOURCES DEPT
SALEM, OREGON

THIS MAP WAS PREPARED FOR
ASSESSMENT PURPOSE ONLY.

NE1/4 SEC. 24 T.25S. R.5W. W.M.
DOUGLAS COUNTY

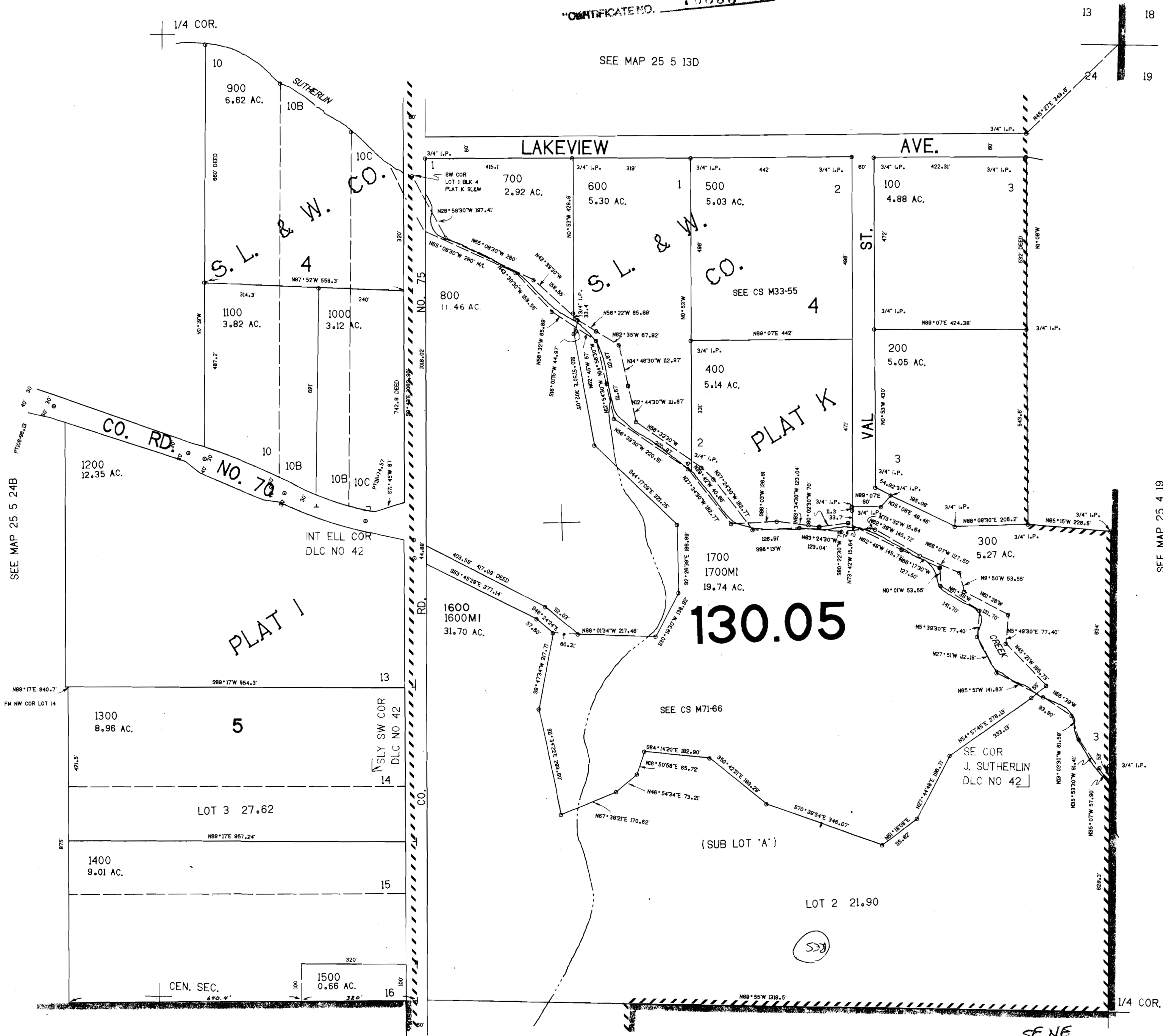
1"=200'

Application No R-76731
Permit No.

REVISED ON
7-20-94

25 5 24A

CERTIFICATE NO. 70653



CONTROL 24-2-79 LAYOUT 32-2-90 RACED 1/4 2-80 CHECKED Ms. 1-80

SEE MAP 25 5 24B

SEE MAP 25 5 13D

SEE MAP 25 4 19

638.000

SEE MAP 25 5 24D

25 5 24A

No Final Proof Map available

No Permit Map available