

R 70749

SECTION 10 T.28S. R.5W. W.M.
DOUGLAS COUNTY

REVISED ON
8-15-94

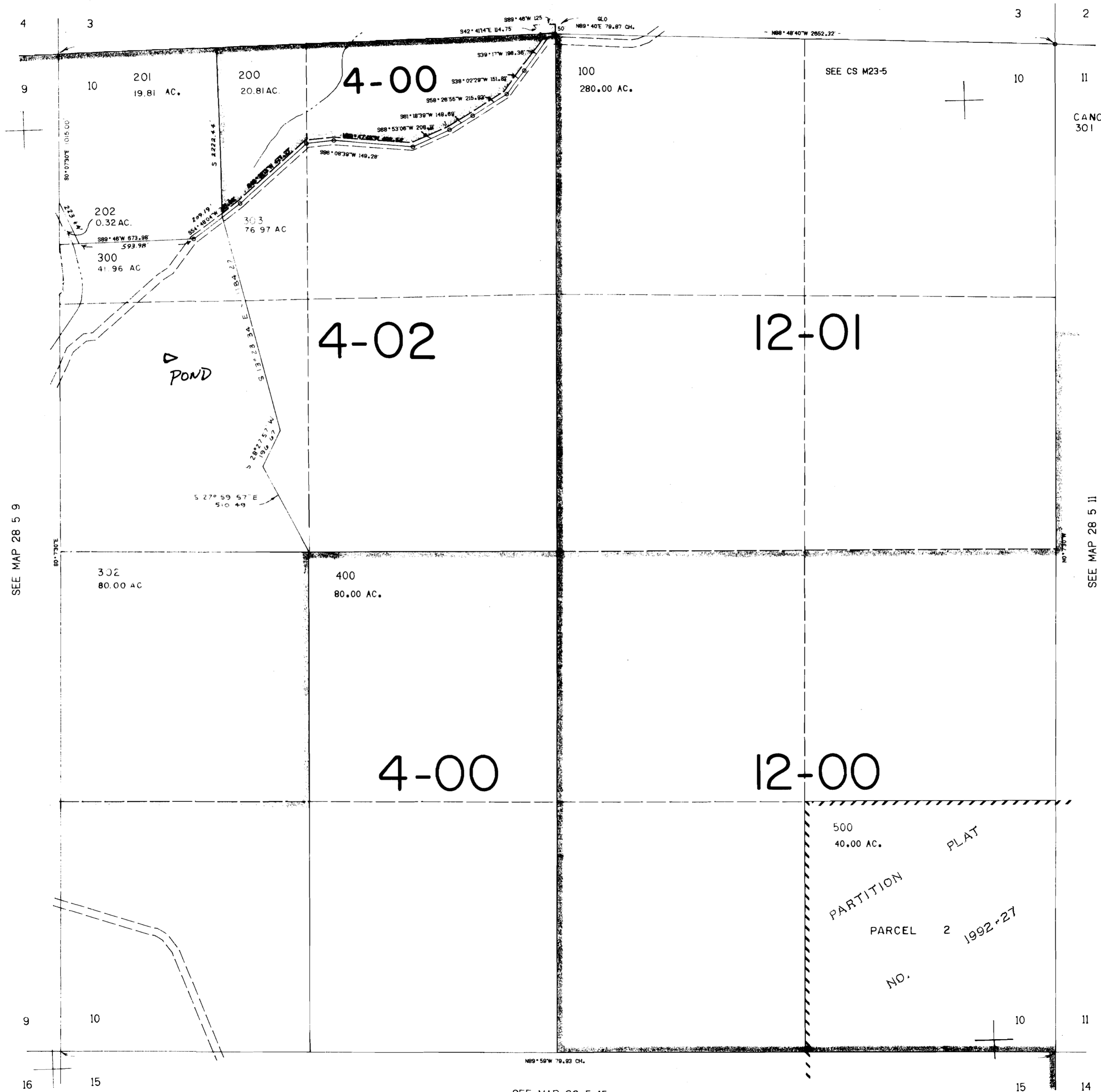
28 5 10

THIS MAP WAS PREPARED FOR
ASSESSMENT PURPOSE ONLY.

CERTIFICATE NO. 50071

1"=400'

SEE MAP 28 5 3



SEE MAP 28 5 9

SEE MAP 28 5 11

SEE MAP 28 5 15

550.000

28 5 10

262.000

No Final Proof Map available

No Permit Map available