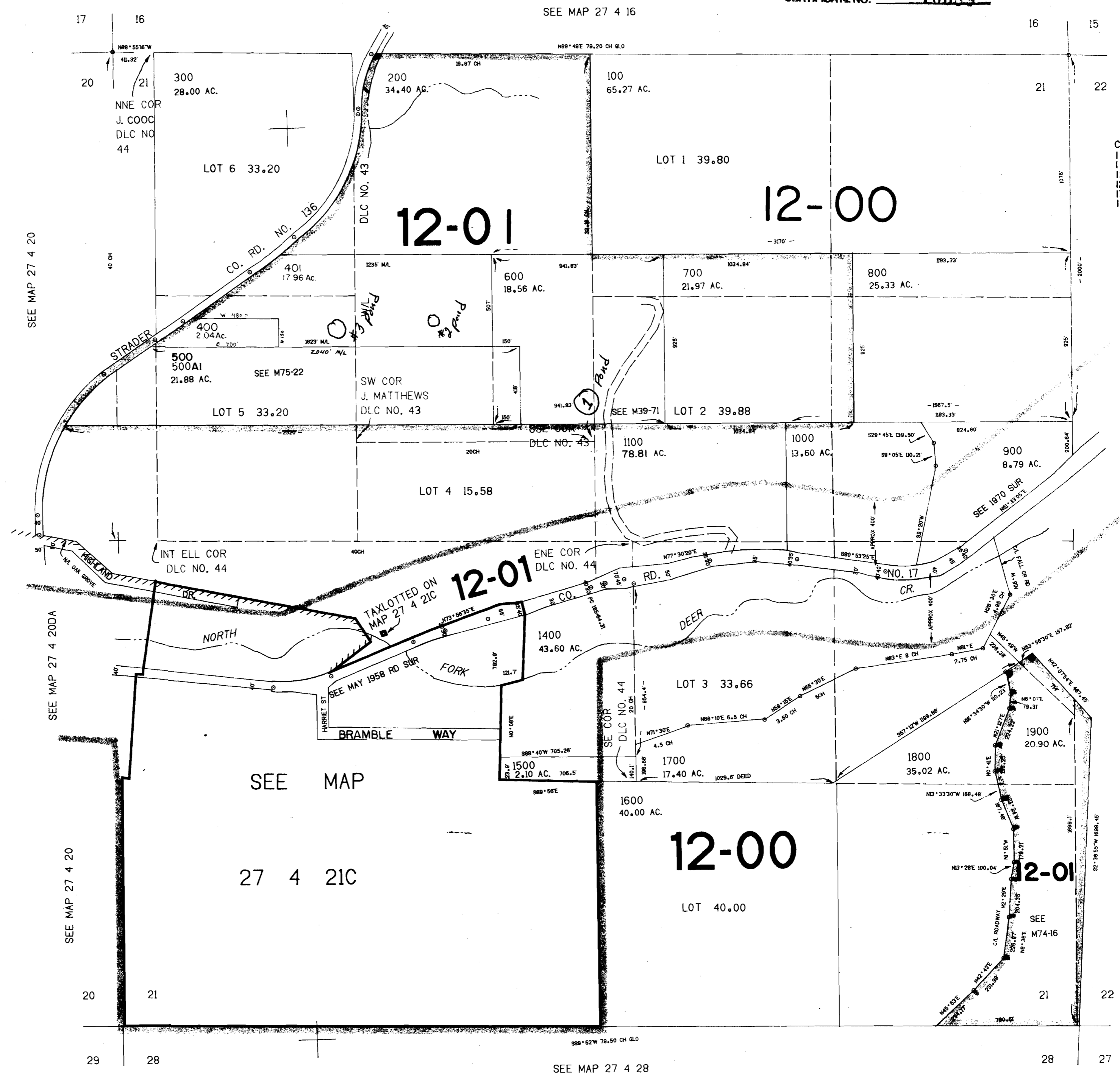


SECTION 21 T.27S. R.4W. W.M.  
 DOUGLAS COUNTY

1"=400'

THIS MAP WAS PREPARED FOR  
 ASSESSMENT PURPOSE ONLY.

COMMUNICATE NO. 70689



CANCELLED N  
 1100U1  
 1100U2  
 1200U1  
 1200U2  
 1300U1  
 1300U2

SEE MAP 27 4 22

REC  
 DEC  
 WATER RES  
 SALEM,

27  
 & IN

SEE MAP 27 4 20

SEE MAP 27 4 20DA

SEE MAP 27 4 20

SEE MAP 27 4 16

SEE MAP 27 4 28

SEE MAP

27 4 21C

285.000

No Final Proof Map available

No Permit Map available