

SECTION 6 T.29S. R. 5 W. W.M.  
DOUGLAS COUNTY

REVISED ON  
9-23-93

This map was prepared for  
assessment purpose only.

1" = 400'

NEHW

Application No. R-76777  
Permit No.

70698

31 32

"CERTIFICATE NO. 70698"

SEE MAP 28 5 31

APPROX. 1/4 COR.

19-09

CANCELLED NO'S  
1700  
601

SEE MAP 29 5 5

APPROX. 1/4 COR.

19-04

525,000

19-00

SEE MAP 29 5 7

1245,000

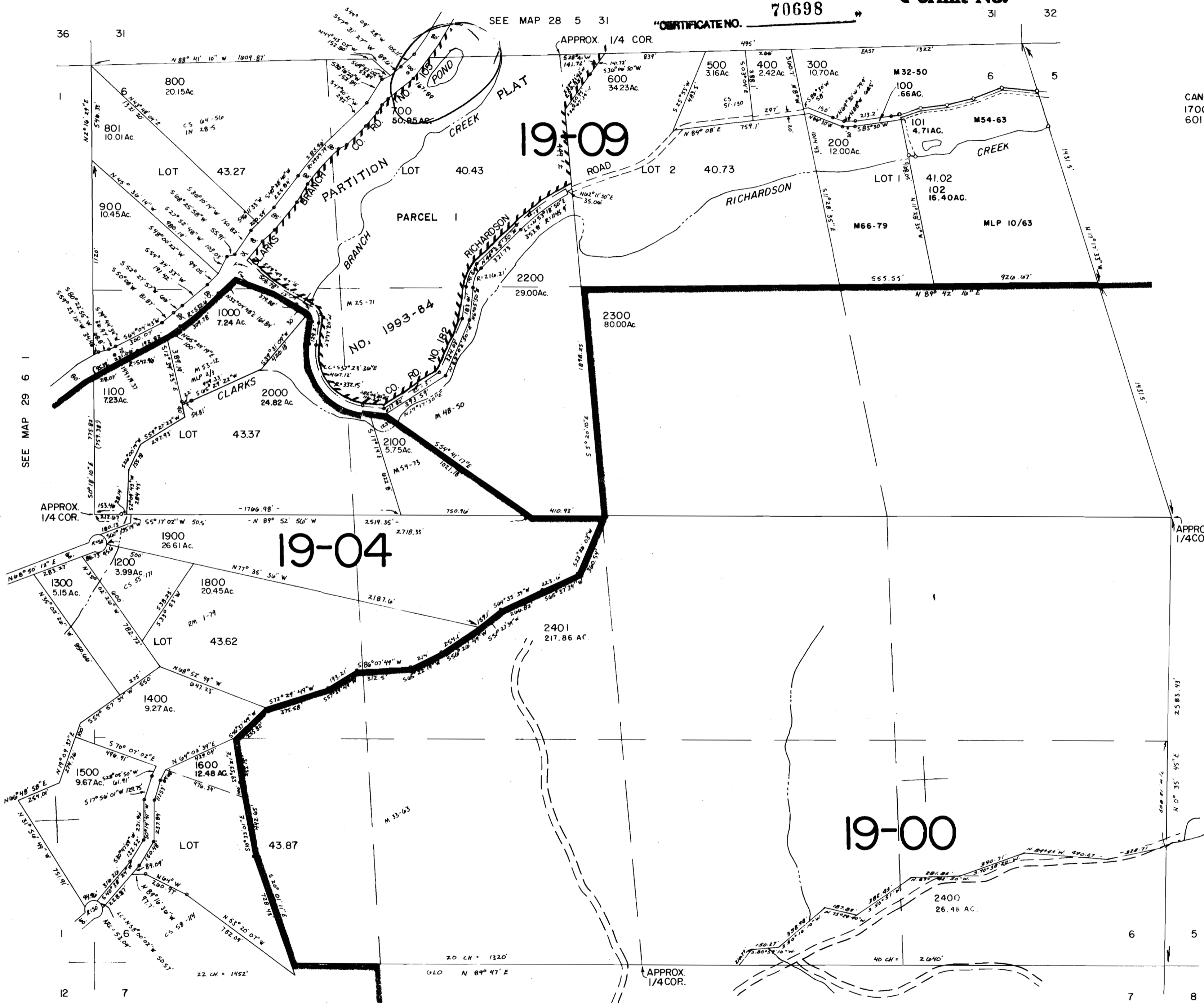
WATER DIVISION  
SOUTH DAKOTA

SEE MAP 29 6 1

SEE MAP 29 6 1 D

36 31 12 7

6 5 7 8



No Final Proof Map available

No Permit Map available