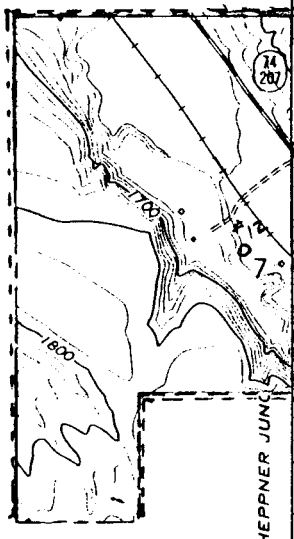
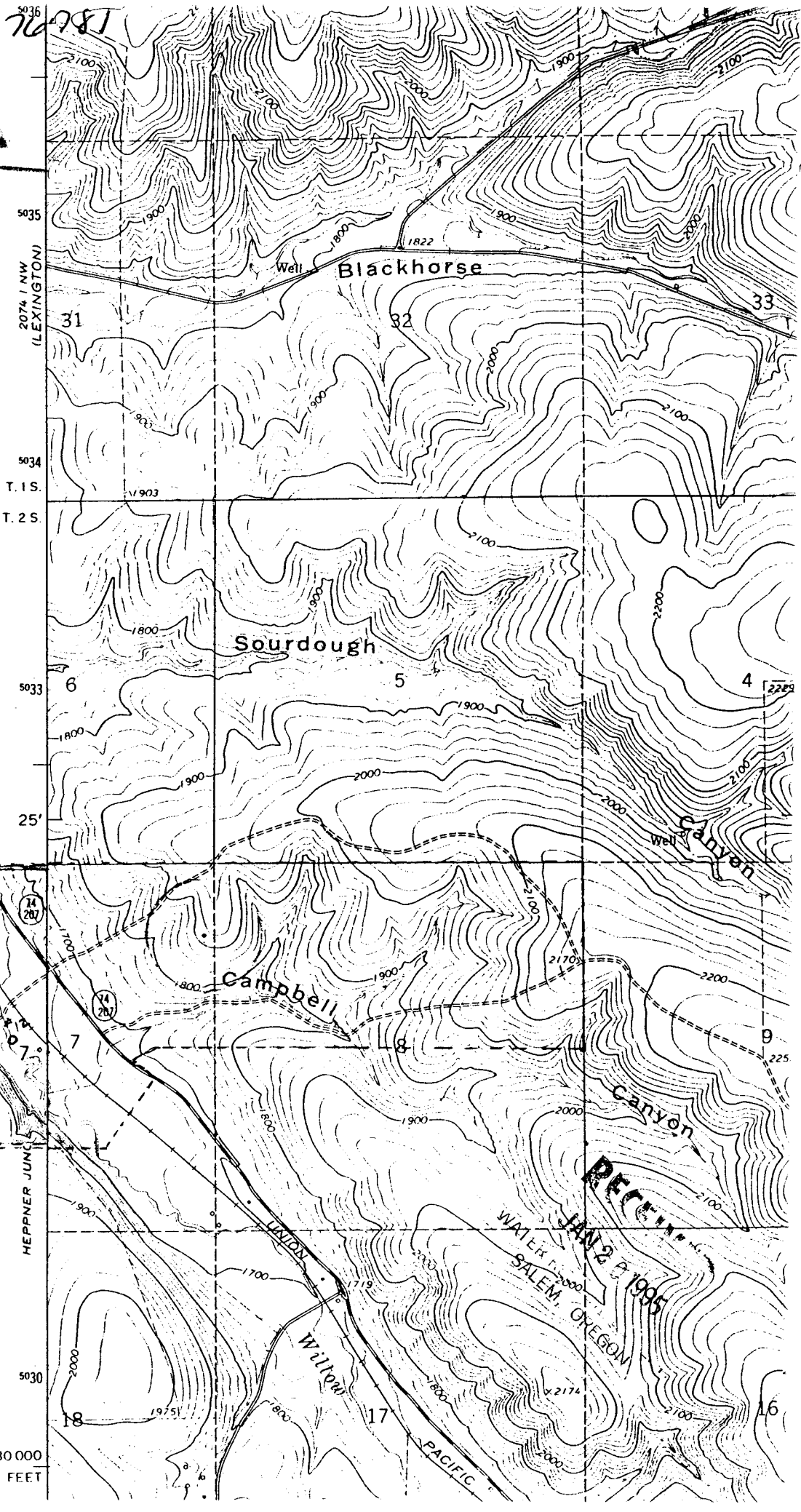


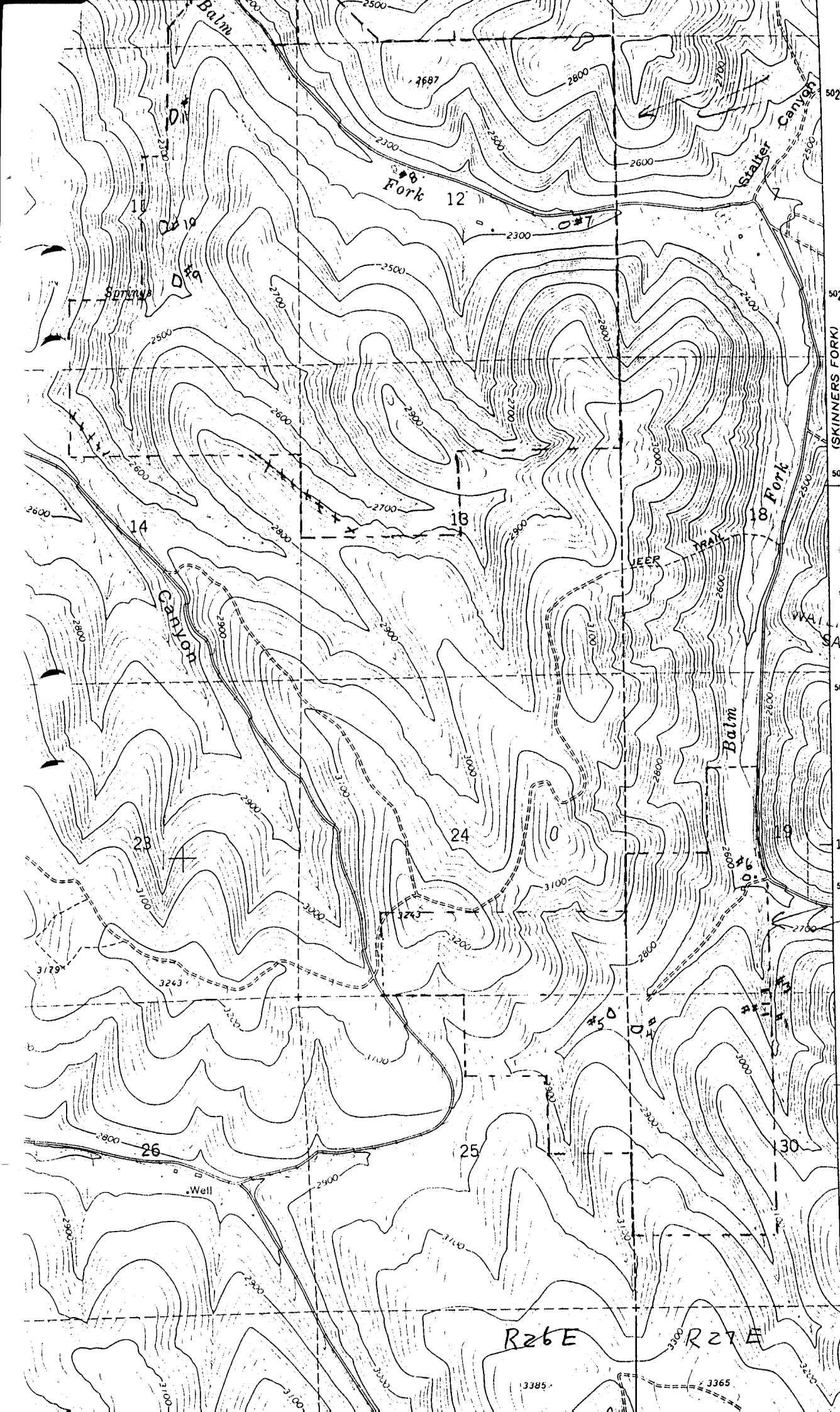
ation No. R-76781
mit No.

ATE NO. 70202

J* OSminw Ranch
Since 1990
(Jess's place)
800 AC.

R 26 E





05min R
 since 1
 139.

Application No R-70781
 Permit No.

70781

RECEIVED

JAN 20 1995

WA... DEPT.
 SALEM, OREGON

upper OS
 since 1
 (Edmondson
 604

T.35.

5022
 5021
 5020
 5019
 5018
 5017
 5016

R26E

R27E

3385

3365