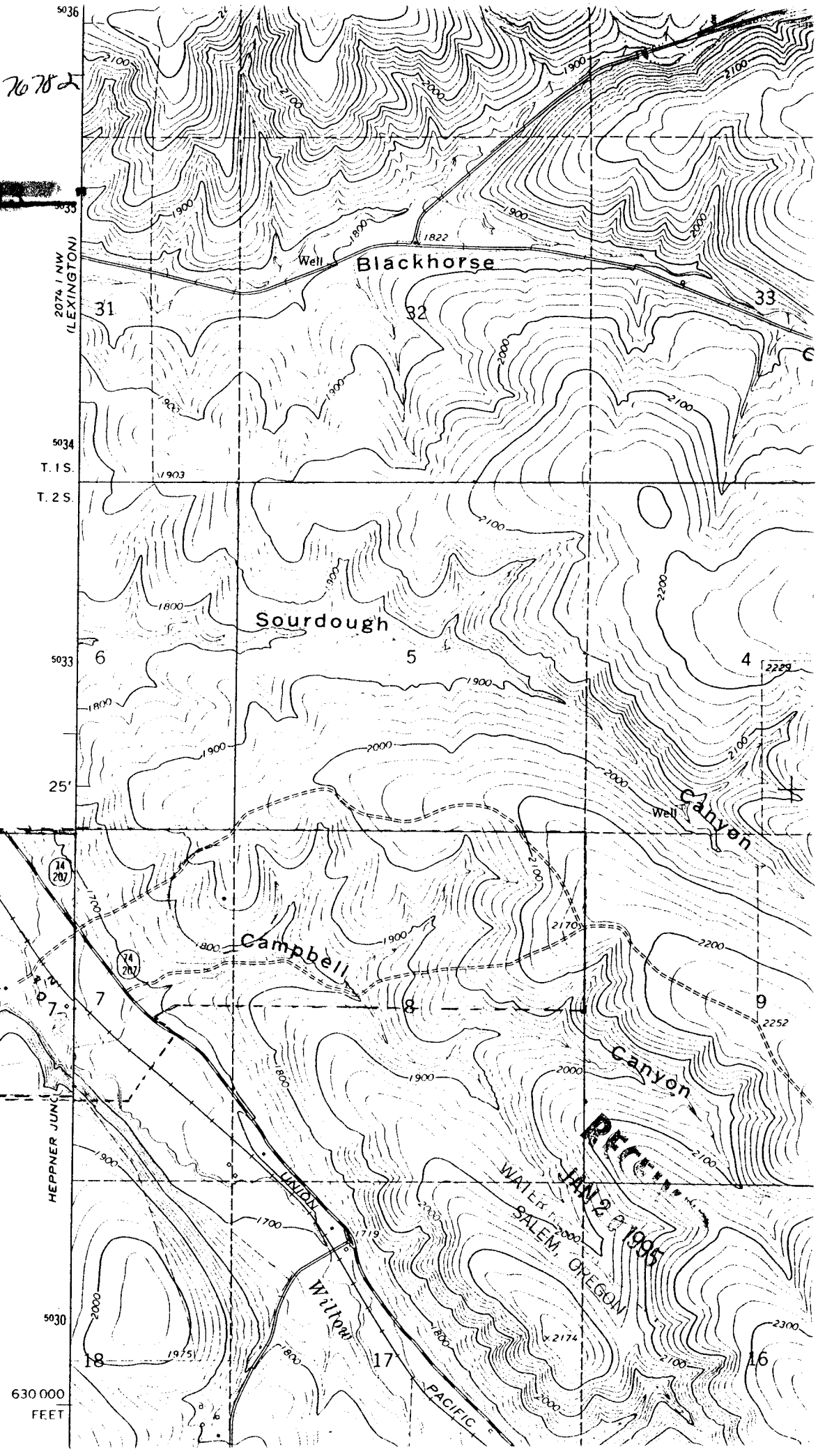


Application No. *L-76782*
Permit No.

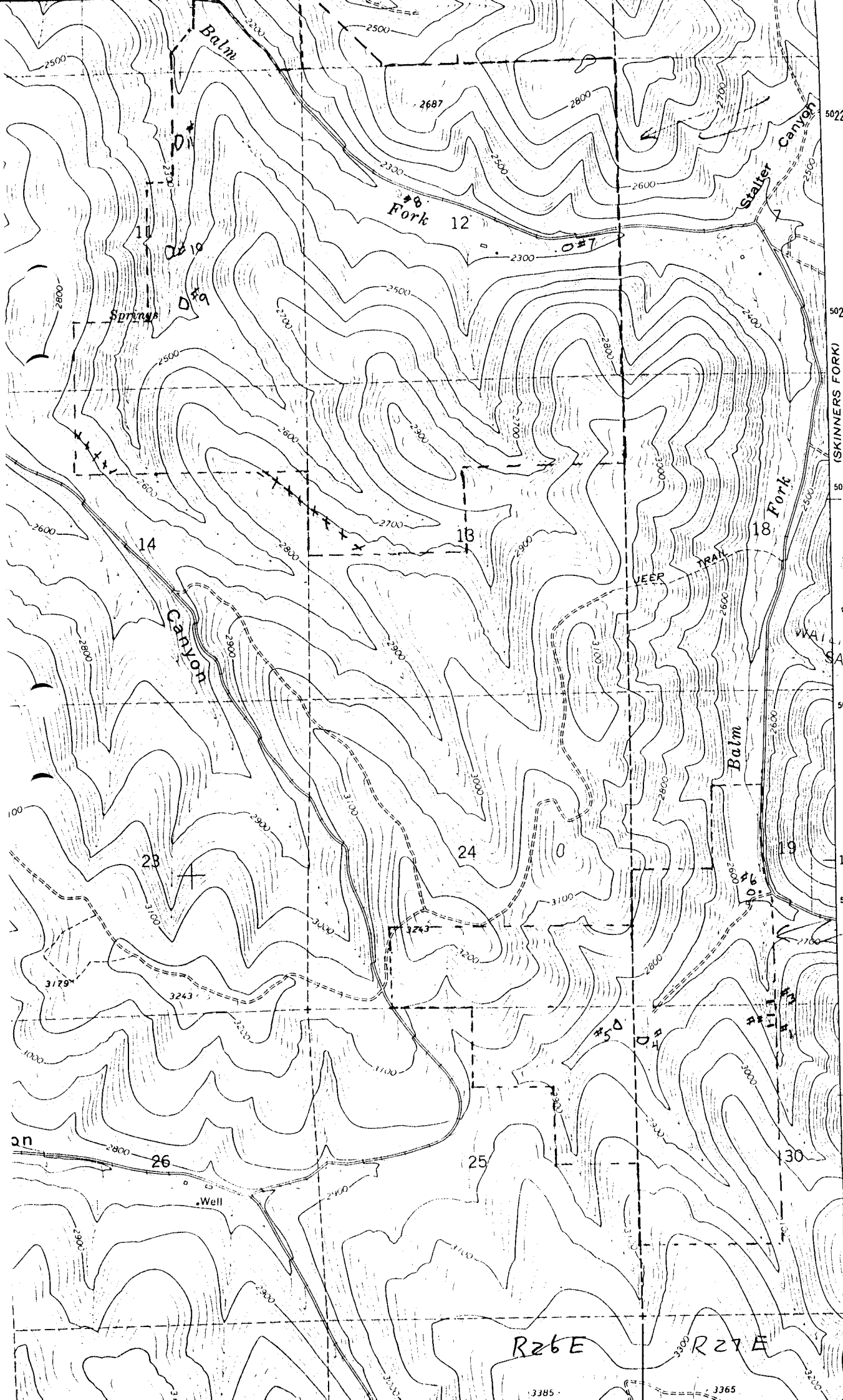
STATE NO. ~~11111~~

*OSMIN Ranch
Since 1990
(Jess's place)
800 AC.*

R 26 E



RECEIVED
JAN 20 1995
WATER DIVISION
SALEM, OREGON



05 min
 since
 Application No. K-70782
 Permit No.

RECEIVED
 JAN 20 1995
 WAJ... DEPT.
 SALEM, OREGON

17'30"
 upper c
 since
 (Edmond
 6.

T.3S.

R26E R27E

5022
 5021 (SKINNERS FORK) 2174 IV SW
 5020
 5019
 5018
 5017
 5016