

This map was prepared for assessment purpose only.

SECTION 36 T.30S. R. 6 W. W.M.

DOUGLAS COUNTY

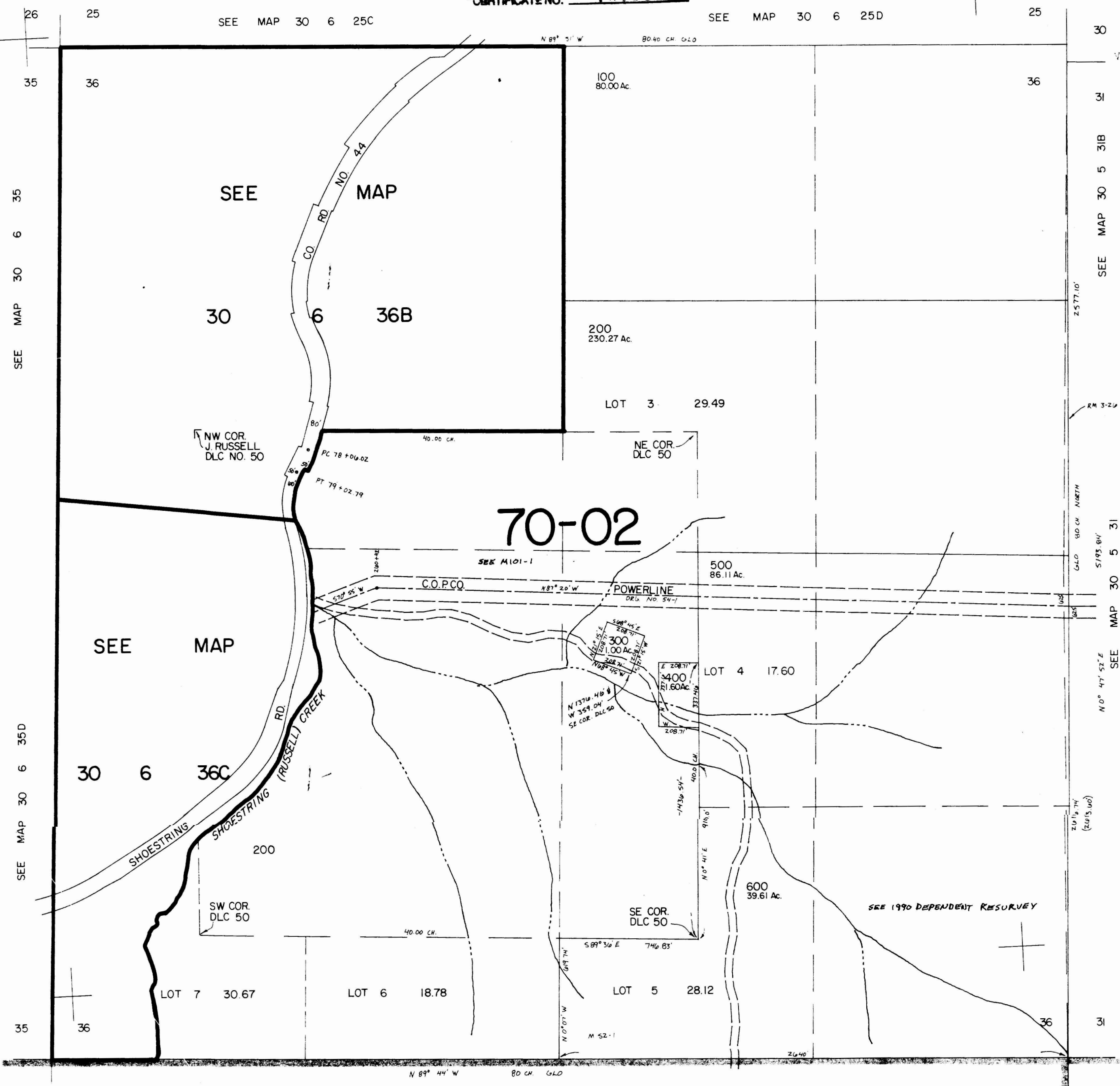
Application No. R-70790
Permit No.

REVISED ON 7-18-91

30 6 36
& INDEX

1" = 400'

CERTIFICATE NO. 70709



RECEIVED
OCT 24 1991
WATER DIVISION
SALMON DIVISION

SEE MAP 30 6 25C
SEE MAP 30 6 25D
SEE MAP 30 5 31B
SEE MAP 30 5 31
SEE MAP 30 5 31
SEE MAP 30 5 31

70-02

467,500

SEE MAP 31 6 INDEX

30 6 36
& INDEX

500

No Final Proof Map available

No Permit Map available