

THIS MAP WAS PREPARED FOR ASSESSMENT PURPOSE ONLY.

SW 1/4 SEC. 36 T.26S. R.7W. W.M.
DOUGLAS COUNTY

REVISED ON
12-23-94

RECEIVED

26 7 36C

1"=200'

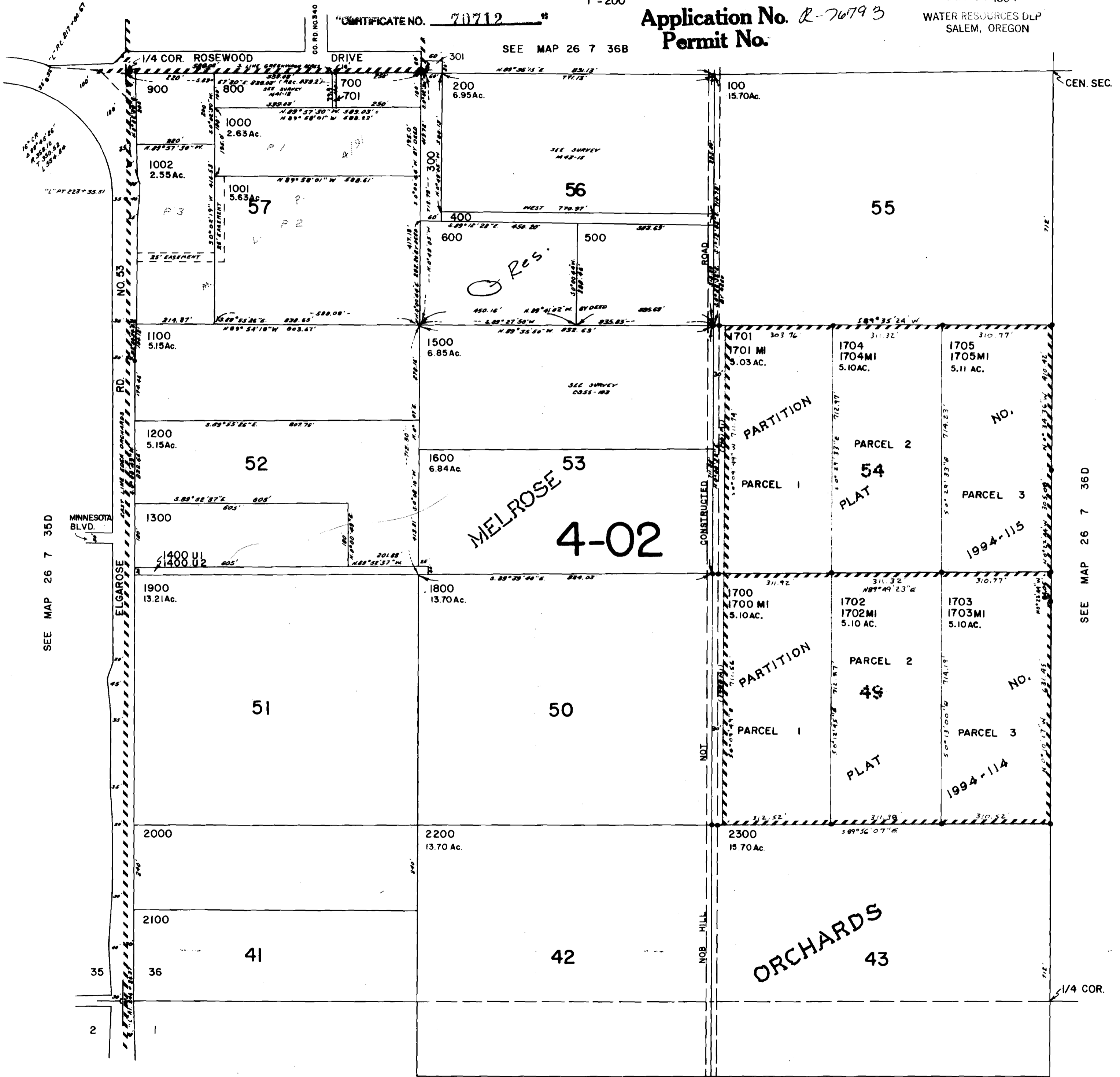
DEC 29 1994

WATER RESOURCES DLP
SALEM, OREGON

CERTIFICATE NO. 70712

Application No. R-70793
Permit No.

SEE MAP 26 7 36B



SEE MAP 26 7 35D

SEE MAP 26 7 36D

SEE MAP 27 7 1

26 7 36C

No Final Proof Map available

No Permit Map available