

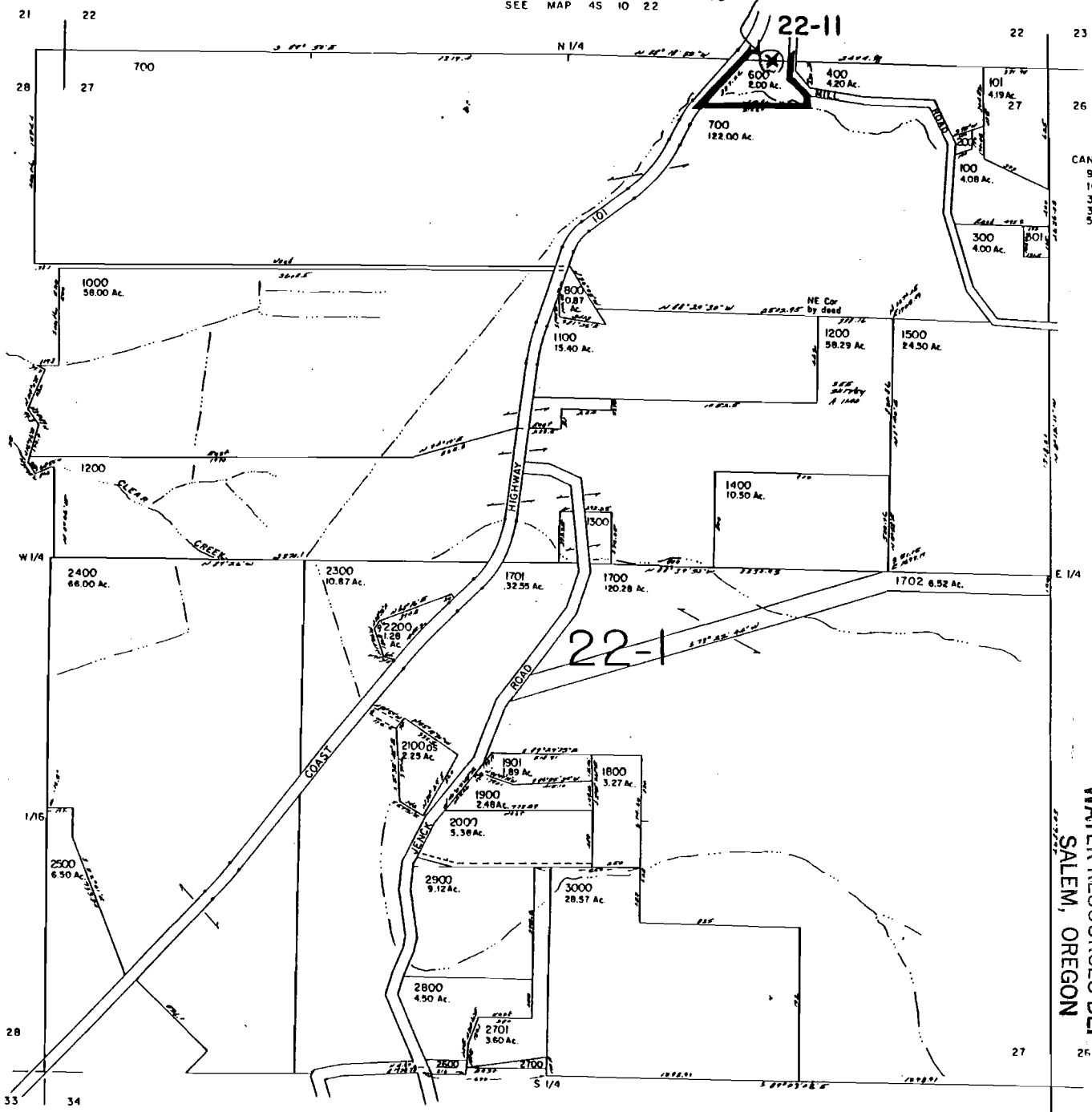
TILLAMOOK COUNTY

1" = 400'

This map was prepared for assessment purpose only.

SEE MAP 45 10 22

POND location



Application No. R-76794
 Permit No.

CANCELLED
 900
 1600
 3100
 3200
 500

of 15
 15

WATER RESOURCES DEPT
 SALEM, OREGON

RECEIVED
 DEC 29 1994

SEE MAP 45 10 34

11-18-94

42
 45 10 27

No Final Proof Map available

No Permit Map available