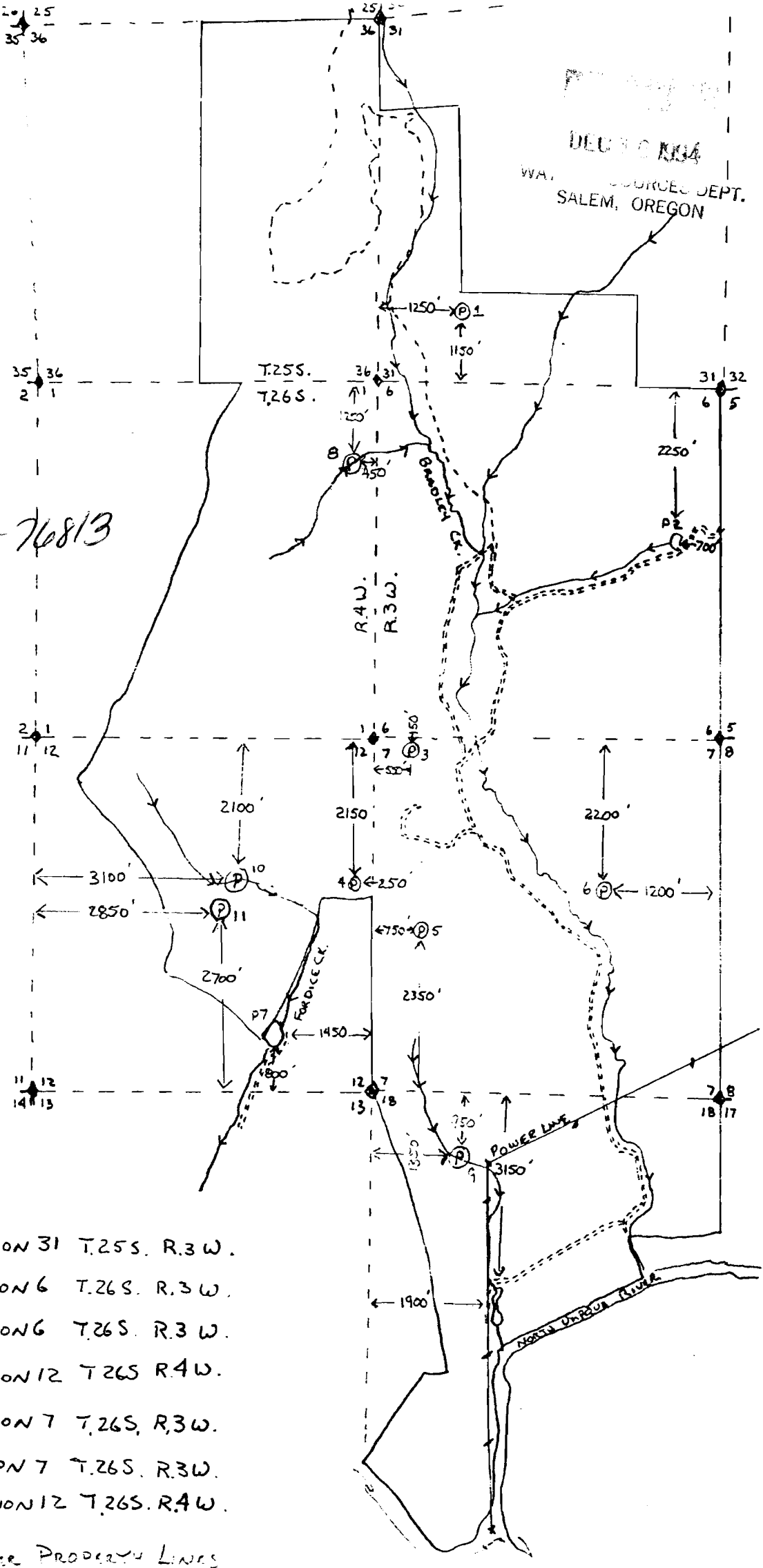


DEPARTMENT OF
 WA. RESOURCES DEPT.
 SALEM, OREGON

Application No. R-76813
 Permit No.



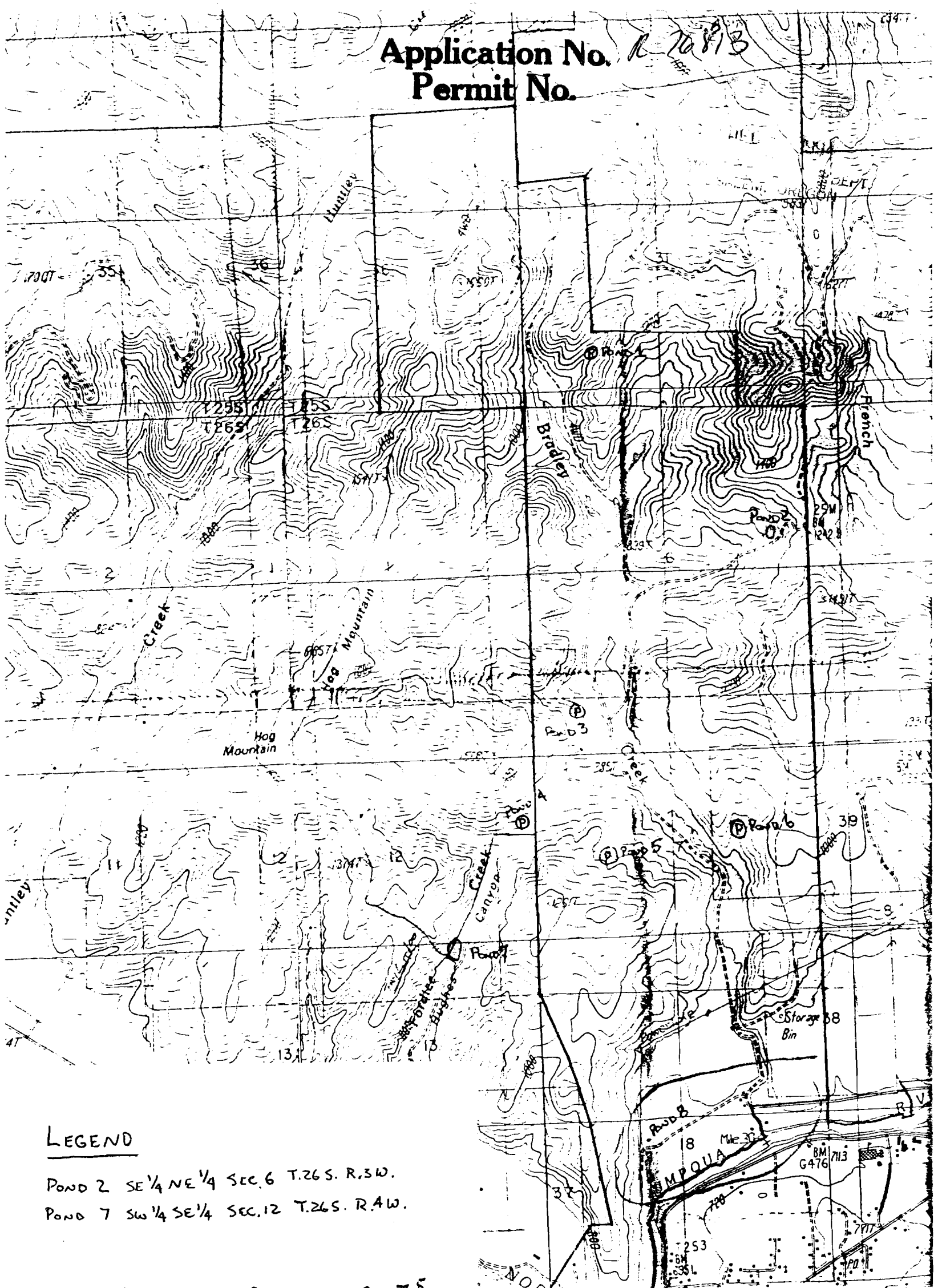
LEGEND

- Ⓟ1 SW 1/4 SW 1/4 SECTION 31 T.25S. R.3 W.
- P2 SE 1/4 NE 1/4 SECTION 6 T.26S. R.3 W.
- Ⓟ3 NW 1/4 NW 1/4 SECTION 6 T.26S. R.3 W.
- Ⓟ4 SE 1/4 NE 1/4 SECTION 12 T.26S. R.4 W.
- Ⓟ5 NW 1/4 SW 1/4 SECTION 7 T.26S. R.3 W.
- Ⓟ6 SE 1/4 NE 1/4 SECTION 7 T.26S. R.3 W.
- P7 SW 1/4 SE 1/4 SECTION 12 T.26S. R.4 W.
- LONE ROCK TIMBER PROPERTY LINES
- SECTION LINES
- P8 NE 1/4 NE 1/4 SECTION 1 T.26S. R.4 W.
- P9 NE 1/4 NW 1/4 SECTION 18 T.26S. R.3 W.
- P10 SW 1/4 NE 1/4 SECTION 12 T.25S. R.4 W.
- P11 SW 1/4 NE 1/4 SECTION 12 T.26S. R.4 W.

CERTIFICATE NO. 70732

PONDS 8 THRU 11 ARE NEW PONDS CONSTRUCTED IN 1994

Application No. 16-10813
Permit No.



LEGEND

POND 2 SE 1/4 NE 1/4 SEC. 6 T.26S. R.3W.
POND 7 SW 1/4 SE 1/4 SEC. 12 T.26S. R.4W.

THESE HIGHLIGHTED PONDS ARE ON 7.5 MIN
U.S.G.S. QUAD MAP COMPILED FROM AERIAL
PHOTO'S TAKEN IN 1982

Glide

No Final Proof Map available

No Permit Map available