

24, 26-13

23 24

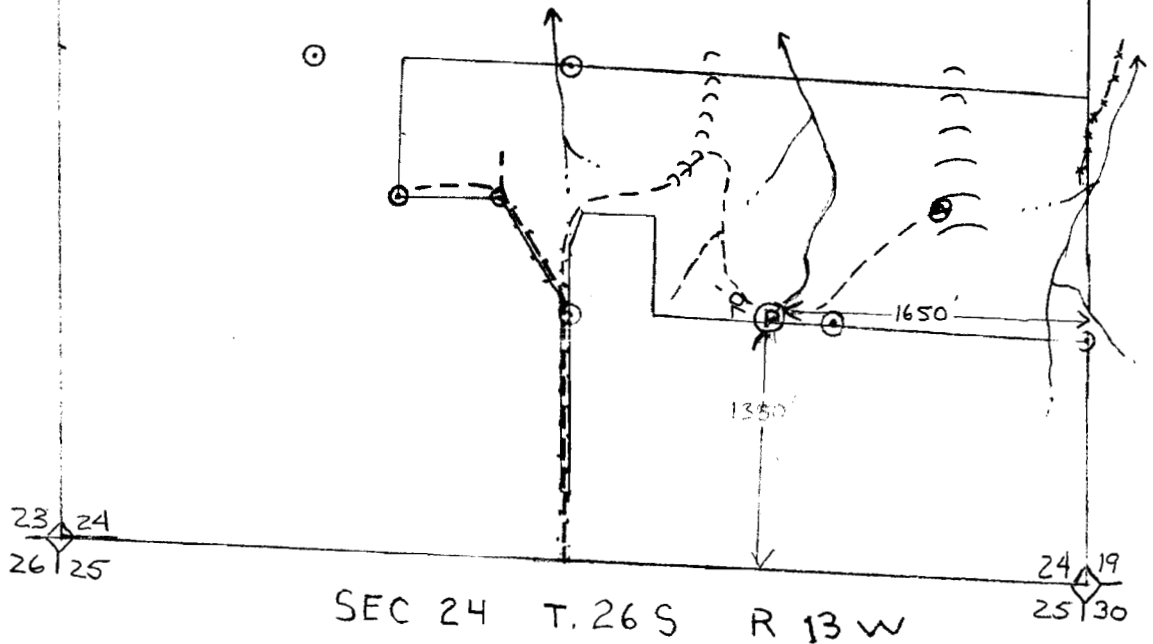
HOOTMAN

13 18
24 19

RECEIVED

DEC 30 1994

WATER RESOURCES DEPT.
SALEM, OREGON



LEGEND

NW 1/4 SE 1/4 SECTION 24 T.26S. R.13W.

Ⓟ = POND LOCATION

Application No. R-76815
Permit No.

No Final Proof Map available

No Permit Map available