

RECEIVED

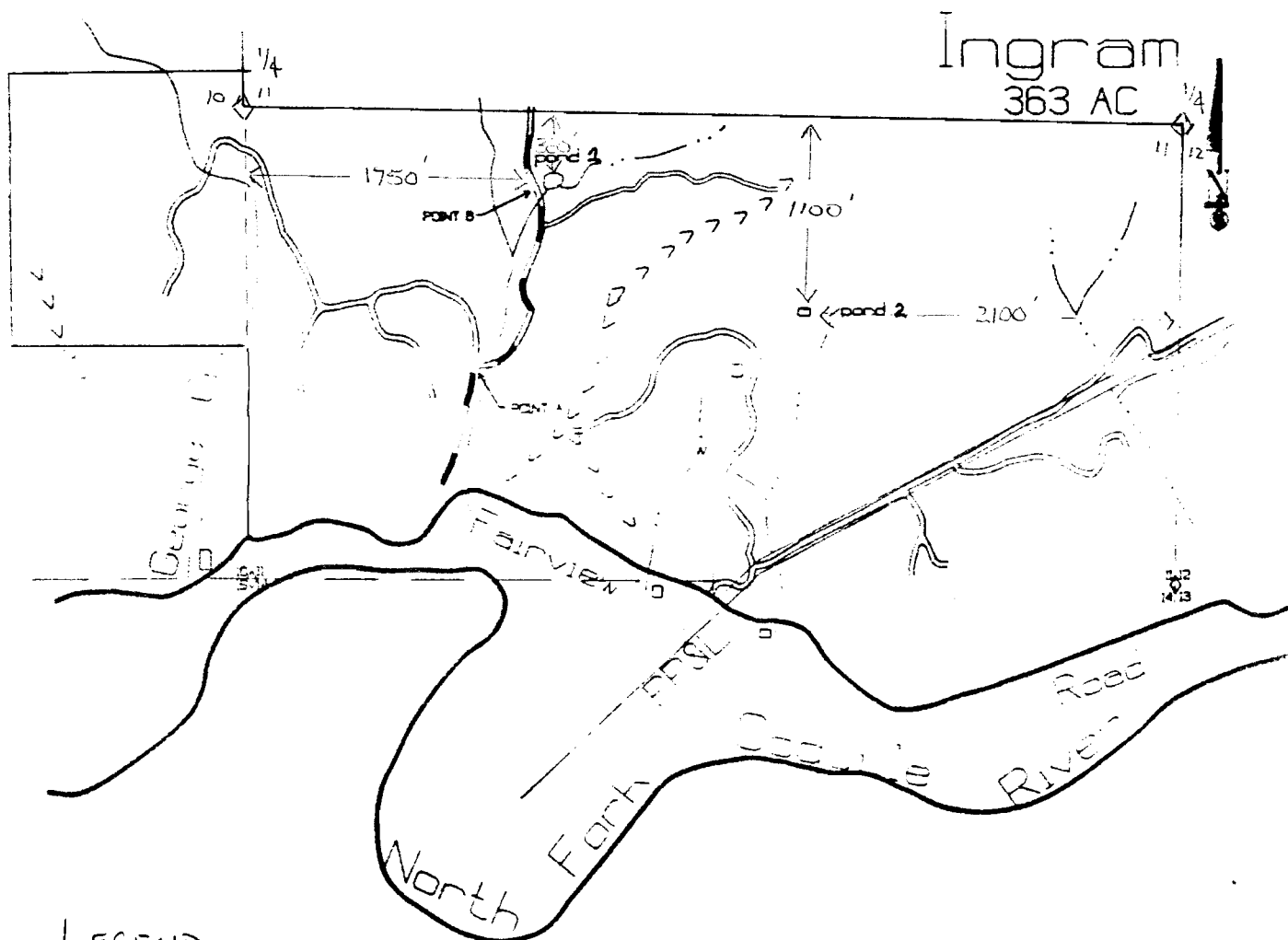
DEC 30 1994

WATER RESOURCES
SALEM, OREGON

CERTIFICATE NO. 70735

SECTION 11 T.28 S. R.12 W.

Application No *K 76816*
Permit No.



LEGEND

POND 1 NE 1/4 SW 1/4 SECTION 11 T.28 S. R.12 W.

POND 2 NW 1/4 SE 1/4 SECTION 11 T.28 S. R.12 W.

No Final Proof Map available

No Permit Map available