

THIS MAP WAS PREPARED FOR ASSESSMENT PURPOSE ONLY.

SE1/4 SEC. 13 T.26S. R.4W. W.M. DOUGLAS COUNTY

1"=200'

Application No. R-76852  
Permit No. 26 4 13D  
REVISED ON 6-2-94

RECEIVED

DEC 29 1994

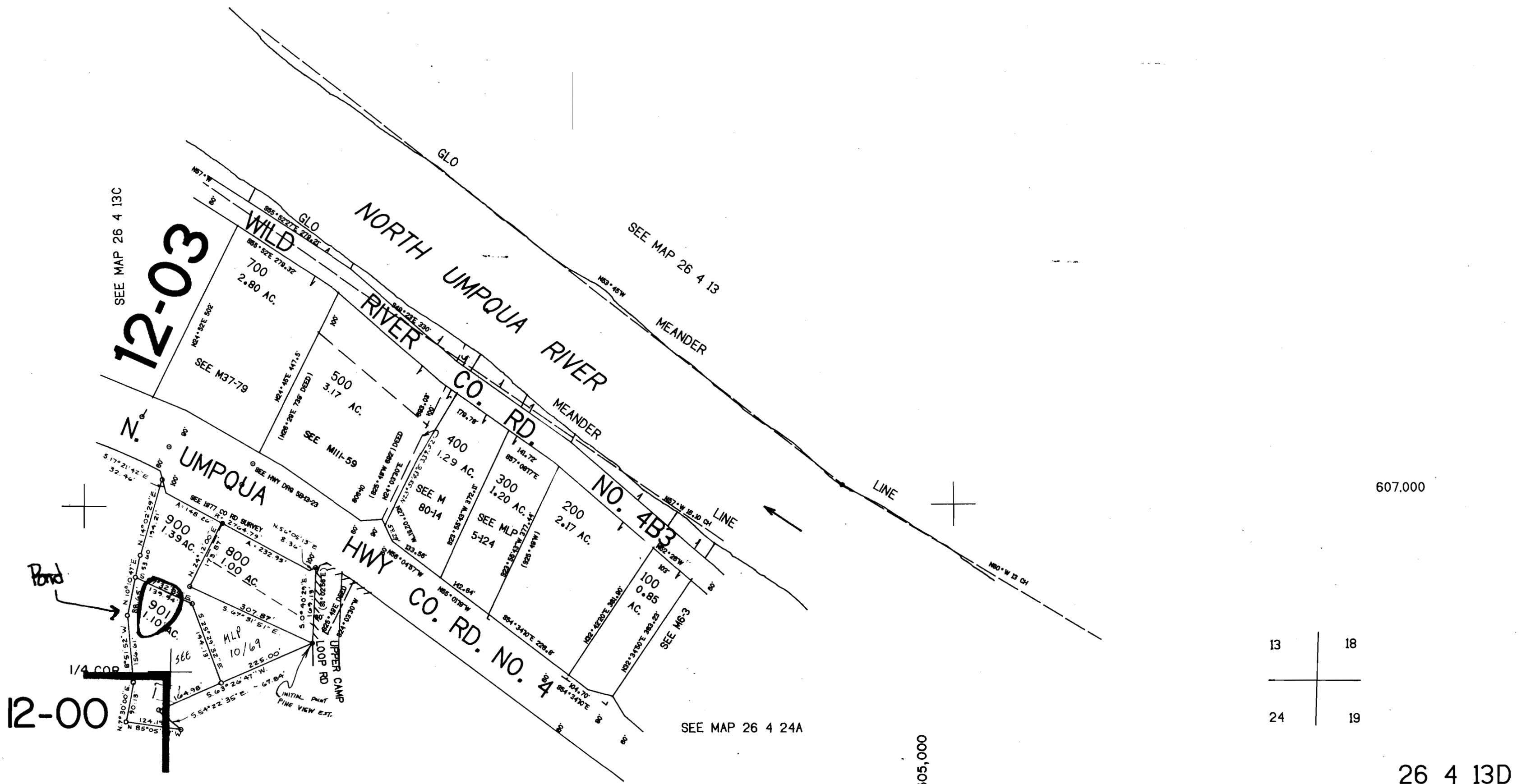
WATER RESOURCES DEPT.  
SALEM, OREGON

1/4 COR.

CANCELLED NO'S  
401 600

APPROX  
CEN. SEC.

CERTIFICATE NO. 70771



607.000

13	18
24	19

26 4 13D

No Final Proof Map available

No Permit Map available