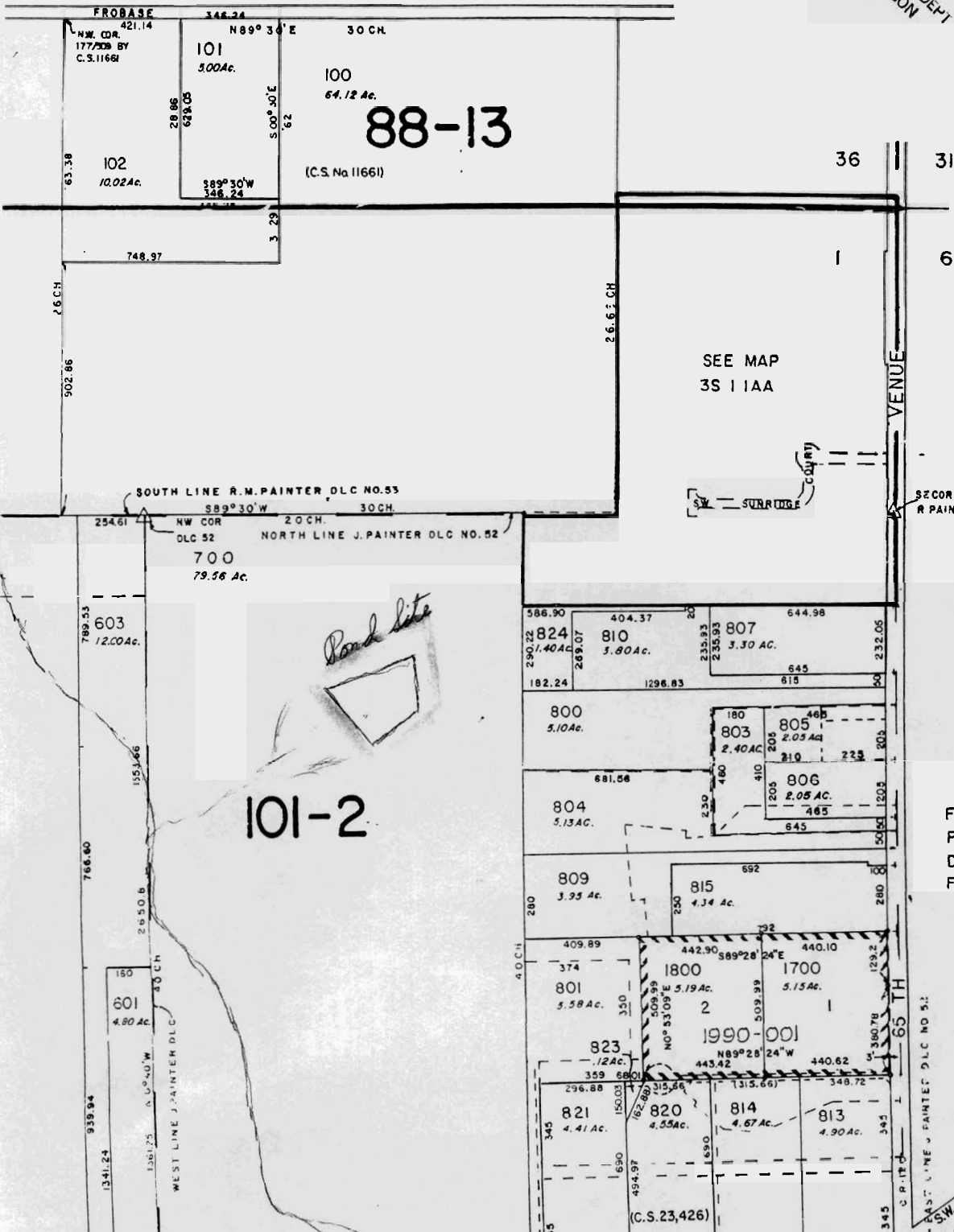


SECTION 1 T3S RIW W.M.  
 WASHINGTON COUNTY OREGON  
 SCALE 1" = 400'

**RECORDED**  
 JAN - 3 1995  
 WATER RESOURCES DEPT  
 SALEM, OREGON

3 3 1 1



- CANCELLED TAX LOTS
- 1501
  - 1502
  - 802
  - 900
  - 808
  - 819
  - 403
  - 302
  - 301
  - 811
  - 812
  - 817
  - 818
  - 303
  - 816
  - 822
  - 1000
  - 1001
  - 1002
  - 1003
  - 1004
  - 1008
  - 1509
  - 2001
  - 1300
  - 1400
  - 1401
  - 1402
  - 1403

W  
 A  
 S  
 C  
 O  
 U  
 N  
 T  
 Y

FOR ASSESSMENT  
 PURPOSES ONLY  
 DO NOT RELY ON  
 FOR ANY OTHER USE

A S

on No. K-76853  
 No.