

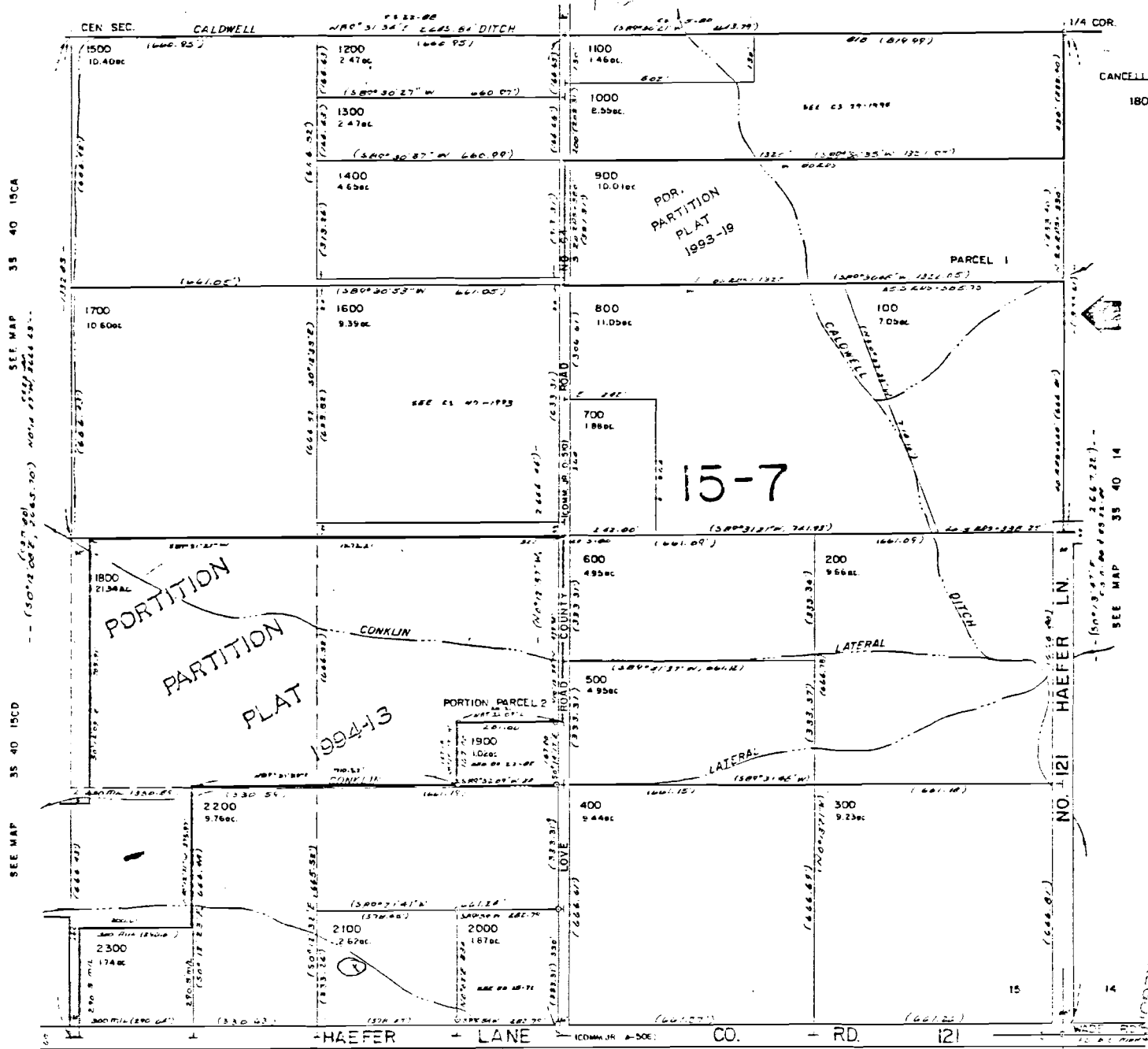
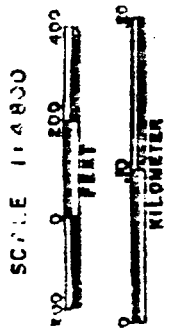
THIS MAP WAS PREPARED FOR ASSESSMENT PURPOSE ONLY.

SE1/4 SEC. 15 T3S R40E W.M.  
UNI. COUNTY

35 40 15D

SEE MAP 35 40 15AC

SEE MAP 35 40 15AD



SEE MAP 35 40 15CA

SEE MAP 35 40 15CB

SEE MAP 35 40 15CD

CERTIFICATE NO. **Application No. R-76908**  
**Permit No.**

↑  
SNYVERT RD

CANCELLED NOS.  
1801

15-7

SEE MAP 35 40 14

WATLIN,  
SALEM, ORUGON

DEC 2 1994

PERMIT

No Final Proof Map available

No Permit Map available