

SW1/4 SEC. 29 T.26S. R.3W. W.M.

DOUGLAS COUNTY

1"=200'

Application No. R-76926  
Permit No.

RECORDED  
JAN - 4 1995 26 3 29C

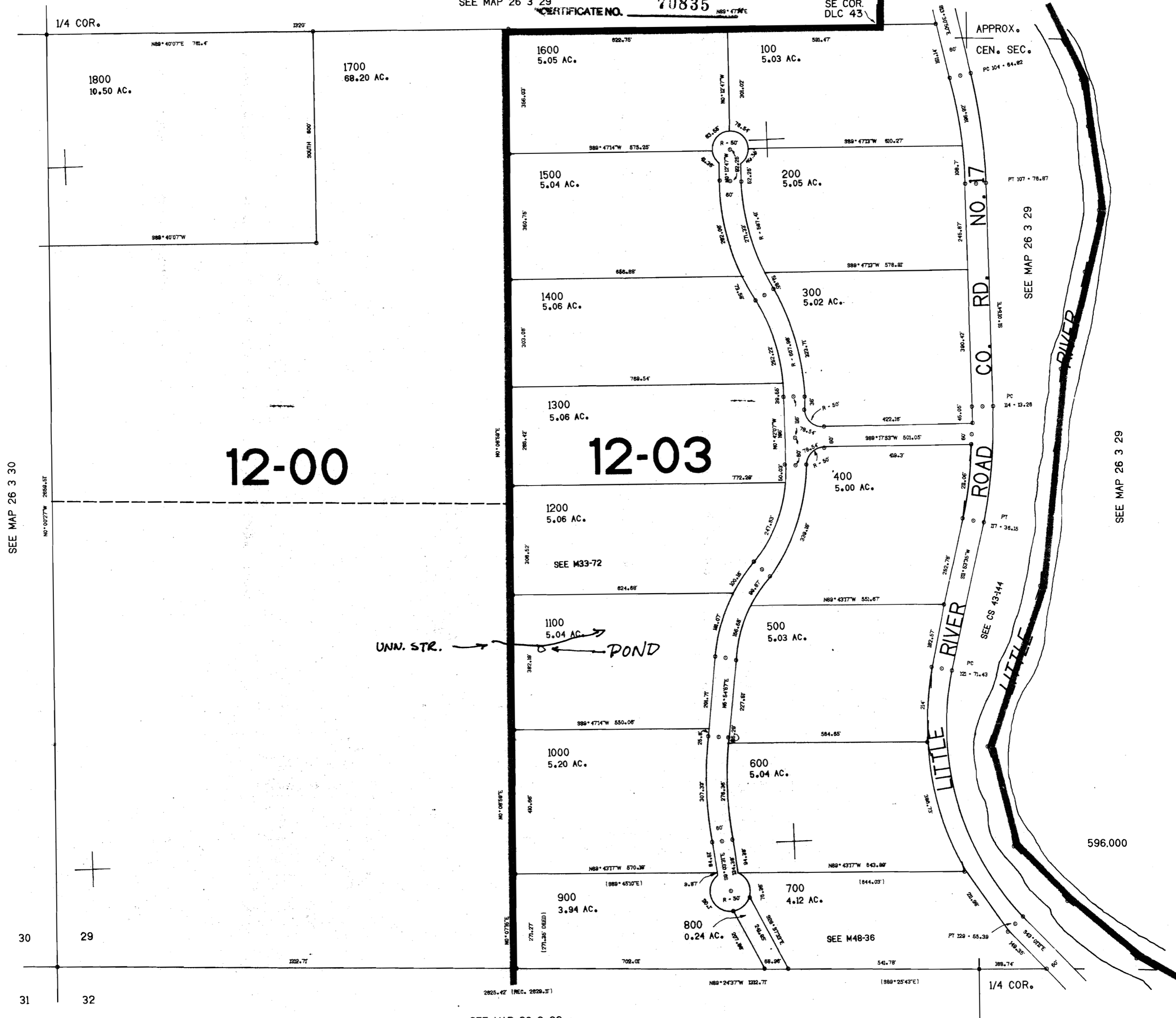
WATER RESOURCES DEPT.  
SALEM, OREGON

THIS MAP WAS PREPARED FOR  
ASSESSMENT PURPOSE ONLY.

SEE MAP 26 3 29

CERTIFICATE NO. 70835

SE COR.  
DLC 43



SEE MAP 26 3 30

12-00

12-03

CO. RD. NO. 17

LITTLE RIVER

LITTLE RIVER

UNN. STR.

POND

SEE MAP 26 3 29

SEE CS 43-144

SEE M48-36

SEE MAP 26 3 32

1.313.000

26 3 29C

No Final Proof Map available

No Permit Map available