

R 76930

~~70839~~

CERTIFICATE NO.

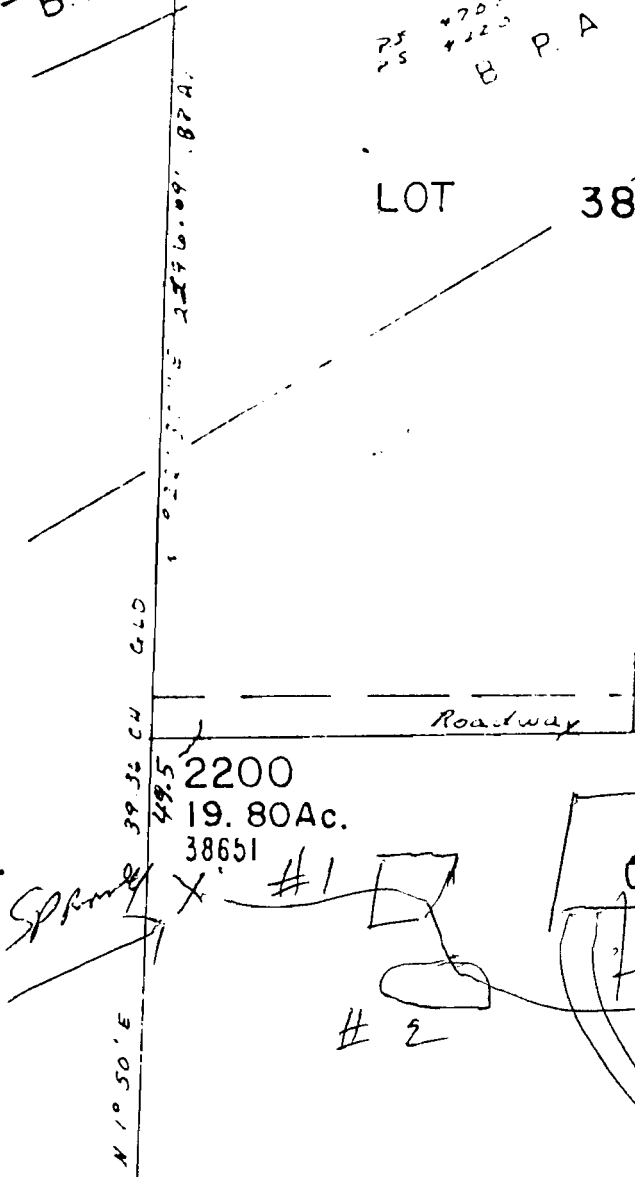
LOT 38.76

RECEIVED

LOT 3

JAN 3 1995

WATER RESOURCES DEPT.
SALEM, OREGON



453.0'
1901
2.11 Ac.

500
8.85 Ac.

2403
3.05 Ac.

2404
9.09 Ac.

2200
19.80 Ac.
38651

2482
1.31 Ac.

2301
1.79 Ac.
38501

38591

2481
1.80 Ac.

2500
2.00 Ac.
38720

2600
1.52 Ac.

2401
6.57 Ac.

3200
3.90 Ac.

3100
4.60 Ac.

2700
1.56 Ac.

2900
7.32 Ac.

2408
10.00 Ac.

2800
1.06 Ac.

3300

TT-20

46-09

SERRAN ROAD

Legal lot

355'

[Handwritten signature]

No Final Proof Map available

No Permit Map available