

R-76934

9 3W 34B

DEC 30 1994

NW1/4 SEC.34 TWP.9S. RGE.3W. WM
MARION COUNTY, OREGON

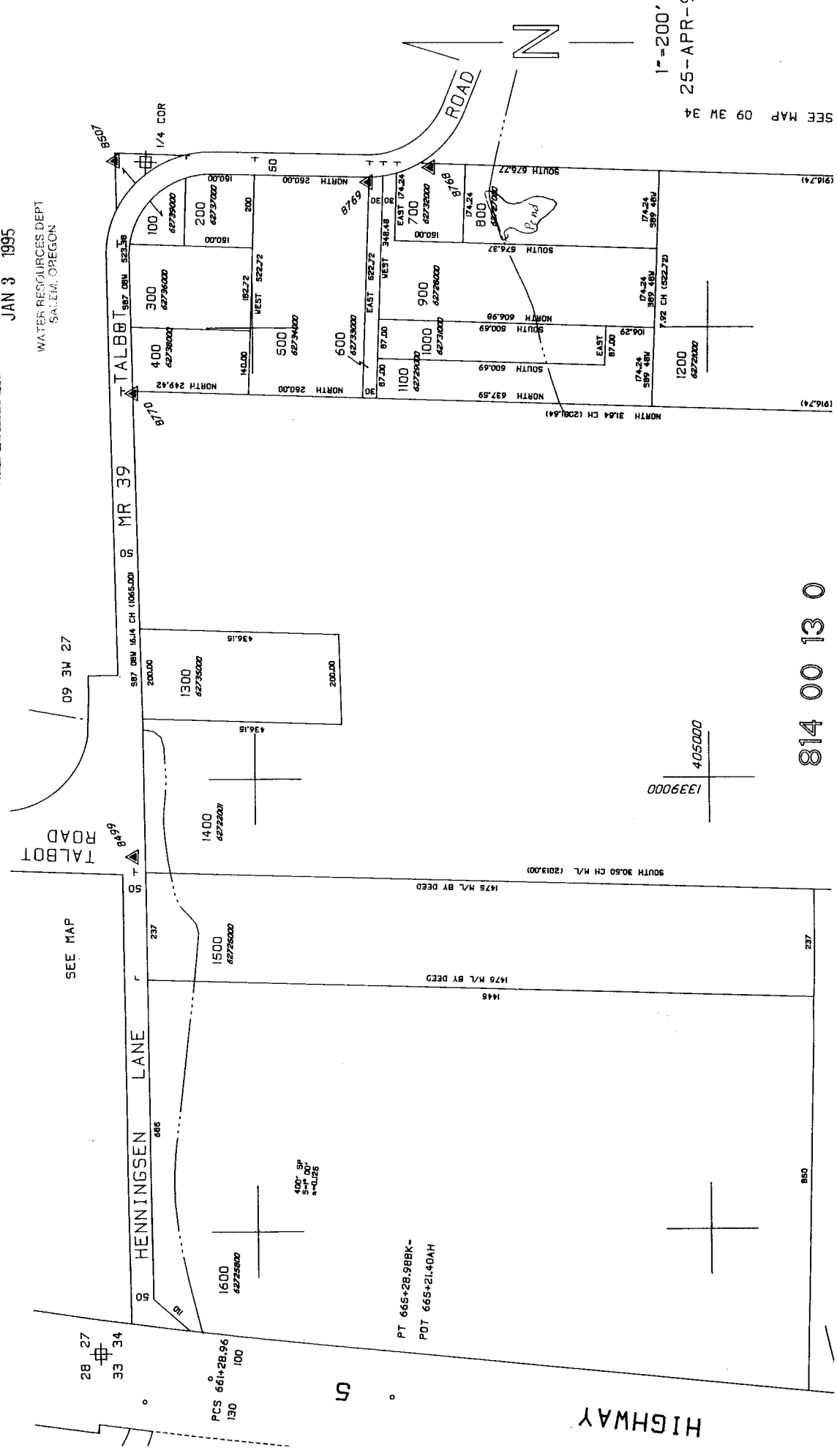
RECEIVED

JAN 3 1995

WATER RESOURCES DEPT
SALEM, OREGON

75843

COMMUNICATE NO.



SEE MAP 09 3W 34

1" = 200'
25-APR-90

139000
405000

814 00 13 0

HIGHWAY