

58-3

C.S. No. 13,451
C.S. No. 16,231

3/4" I.P.
N 89° 40' 05" E 15.55
SAID TO BE 1/16 COR.
C.S. 16,231

FOR ASSESSMENT
PURPOSES ONLY
DO NOT RELY ON
FOR ANY OTHER USE

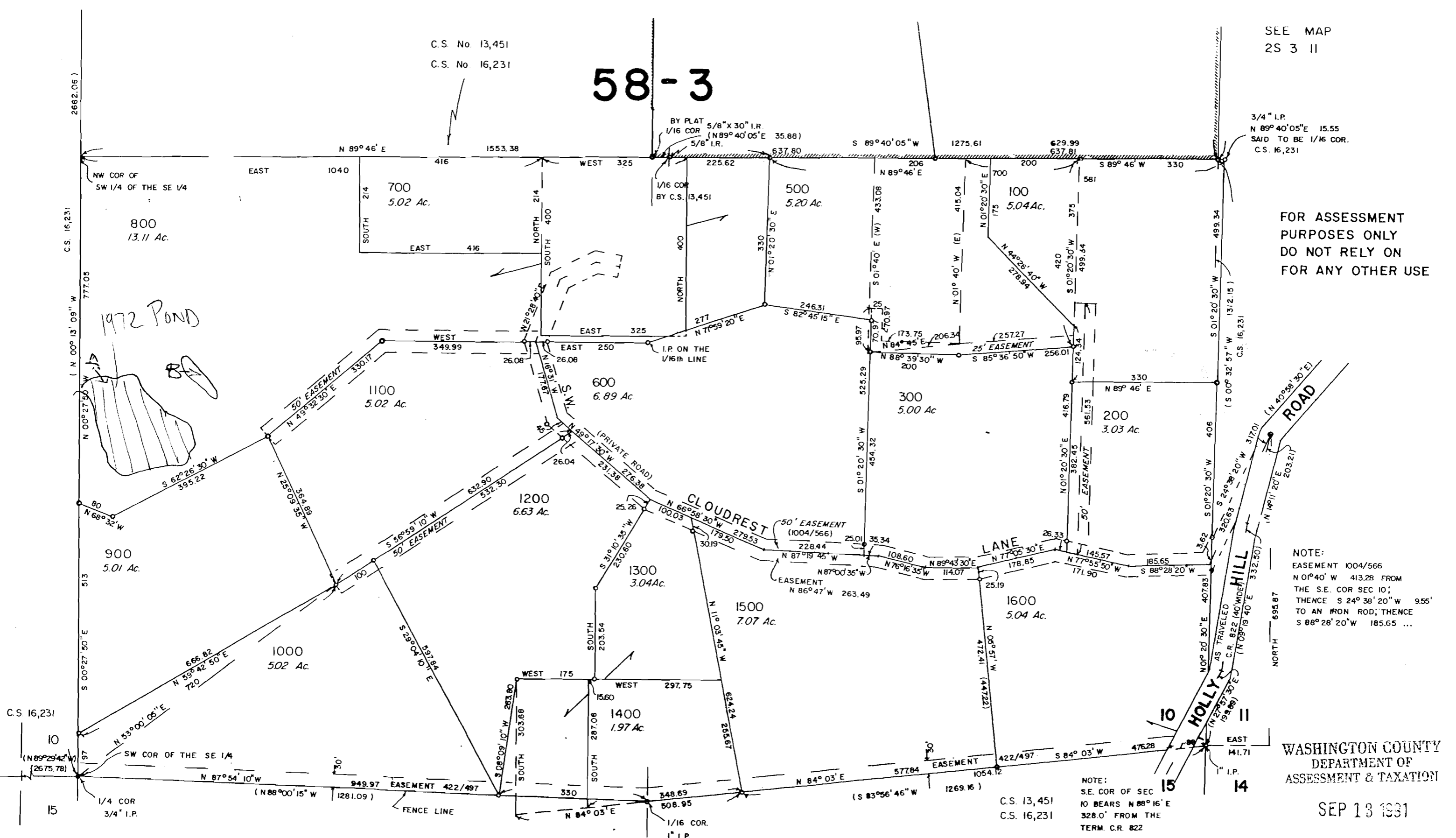
NOTE:
EASEMENT 1004/566
N 01° 40' W 413.28 FROM
THE S.E. COR SEC 10;
THENCE S 24° 38' 20" W 9.55'
TO AN IRON ROD; THENCE
S 88° 28' 20" W 185.65 ...

WASHINGTON COUNTY
DEPARTMENT OF
ASSESSMENT & TAXATION

SEP 13 1991

FOR ASSESSMENT PURPOSES
ONLY - DO NOT RELY ON
FOR OTHER USE

2S 3 10D



YAMHILL COUNTY

SECTION 15
T2S R3W

Application No R-76957
Permit No.

NOTE:
S.E. COR OF SEC
10 BEARS N 88° 16' E
328.0' FROM THE
TERM. C.R. 822

C.S. 13,451
C.S. 16,231

C.S. 16,231

2662.06

C.S. 16,231

(N 00° 13' 09" W
777.05

N 00° 27' 50" W
513

(N 89° 23' 42" W
2675.78)

15

N 89° 46' E
1040

1553.38
416

WEST 325

BY PLAT
1/16 COR
5/8" I.R.
5/8" x 30" I.R.
(N 89° 40' 05" E 35.88)
5/8" I.R.

S 89° 40' 05" W
1275.61

629.99
637.81

S 89° 46' W
330

499.34

800
13.11 Ac.

700
5.02 Ac.

500
5.20 Ac.

100
5.04 Ac.

1100
5.02 Ac.

600
6.89 Ac.

300
5.00 Ac.

200
3.03 Ac.

1200
6.63 Ac.

1300
3.04 Ac.

1500
7.07 Ac.

1600
5.04 Ac.

900
5.01 Ac.

1000
5.02 Ac.

1400
1.97 Ac.

SW COR OF THE SE 1/4

(N 88° 00' 15" W
1281.09)

EASEMENT 422/497
949.97

WEST 175

WEST 297.75

SOUTH 287.06

N 84° 03' E
577.84

EASEMENT
422/497

S 84° 03' W
476.28

(S 83° 56' 46" W
1269.16)

15

14

10

11

12

13

14

15

16

17

18

19

20

21

22

23

24

25

26

27

28

29

30

31

32

33

34

35

36

37

38

39

40

41

42

43

44

45

46

47

48

49

50

51

52

53

54

55

56

57

58

59

60

61

62

63

64

65

66

67

68

69

70

71

72

73

74

75

76

77

78

79

80

81

82

83

84

85

86

87

88

89

90

91

92

93

94

95

96

97

98

99

100

101

102

103

104

105

106

107

108

109

110

111

112

113

114

115

116

117

118

119

120

121

122

123

124

125

126

127

128

129

130

131

132

133

134

135

136

137

138

139

140

141

142

143

144

145

146

147

148

149

150

151

152

153

154

155

156

157

158

159

160

161

162

163

164

165

166

167

168

169

170

171

172

173

174

175

176

177

178

179

180

181

182

183

184

185

186

187

188

189

190

191

192

193

194

195

196

197

198

199

200

201

202

203

204

205

206

207

208

209

210

211

212

213

214

215

216

217

218

219

220

221

222

223

224

225

226

227

228

229

230

231

232

233

234

235

236

237

238

239

240

241

242

243

244

245

246

247

248

249

250

251

252

253

254

255

256

257

258

259

260

261

262

263

264

265

266

267

268

269

270

271

272

273

274

275

276

277

278

279

280

281

282

283

284