

THIS MAP WAS PREPARED FOR ASSESSMENT PURPOSE ONLY

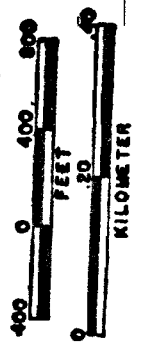
SECTION 15 T.9S. R.45E. W.M. BAKER COUNTY

9 45 15

1" = 400'

SEE MAP 9 45 10

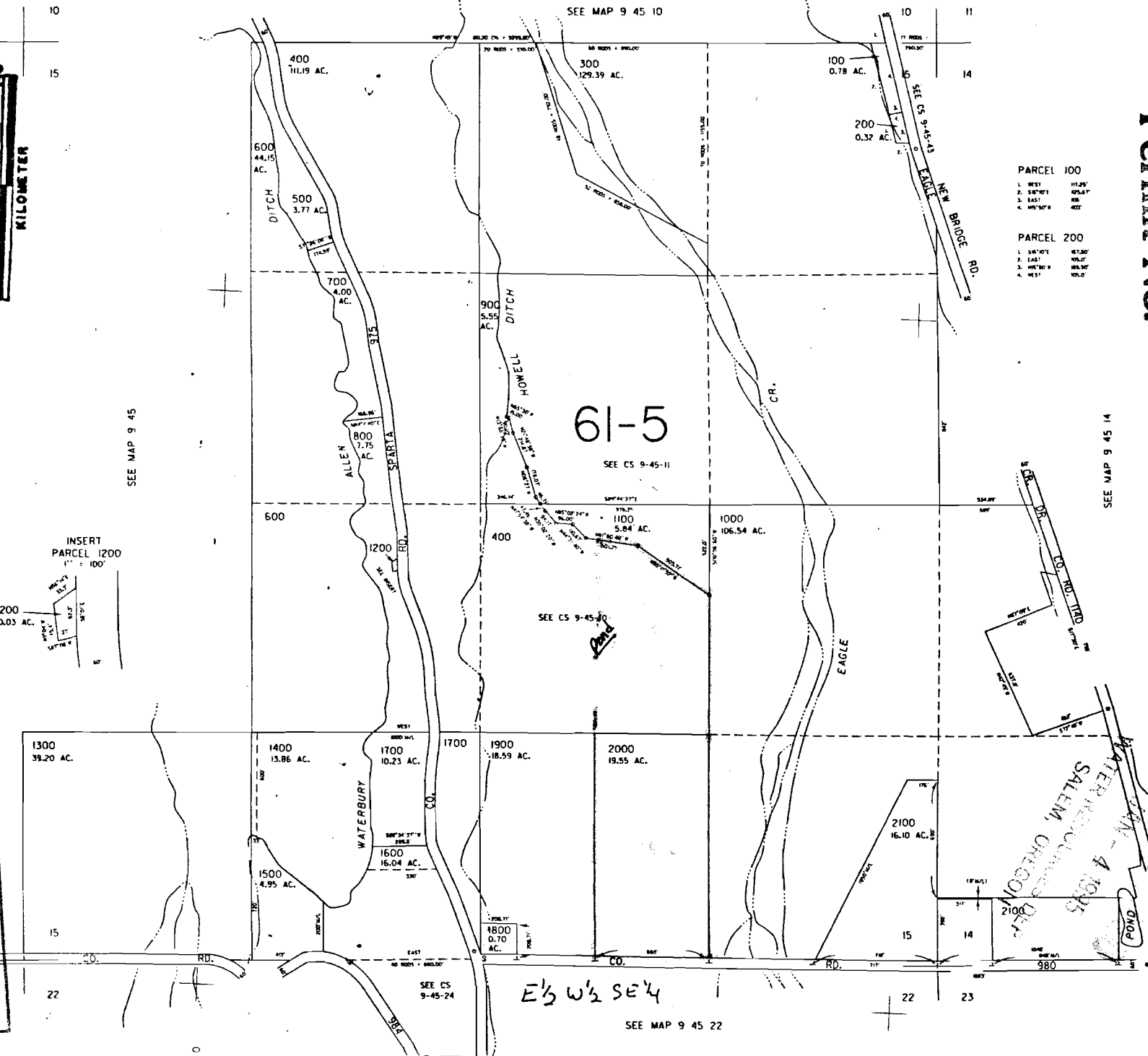
SCALE 1:9600



Application No. 2-76991 Permit No.

PARCEL 100	
1. S87°01'	112.26'
2. S87°01'	105.24'
3. S87°01'	100'
4. W87°30''	100'

PARCEL 200	
1. S87°01'	112.26'
2. S87°01'	105.24'
3. W87°30''	100.00'
4. W87°30''	100.00'



61-5

SEE CS 9-45-11

SEE CS 9-45-10

SEE CS 9-45-24

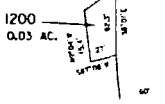
SEE MAP 9 45 22

E 1/2 W 1/2 SE 1/4

SEE MAP 9 45

SEE MAP 9 45 14

INSERT PARCEL 1200



RECEIVED JUN 15 1992 DEPT. OF REVENUE STATE OF OREGON ASSESSMENT & APPRAISAL DIV.

RECEIVED JUN 30 1994 WATER RESOURCES DEPT. EASTERN REGION

WATER RESOURCES DEPT. SALEM, OREGON JUN 4 1995

No Final Proof Map available

No Permit Map available