

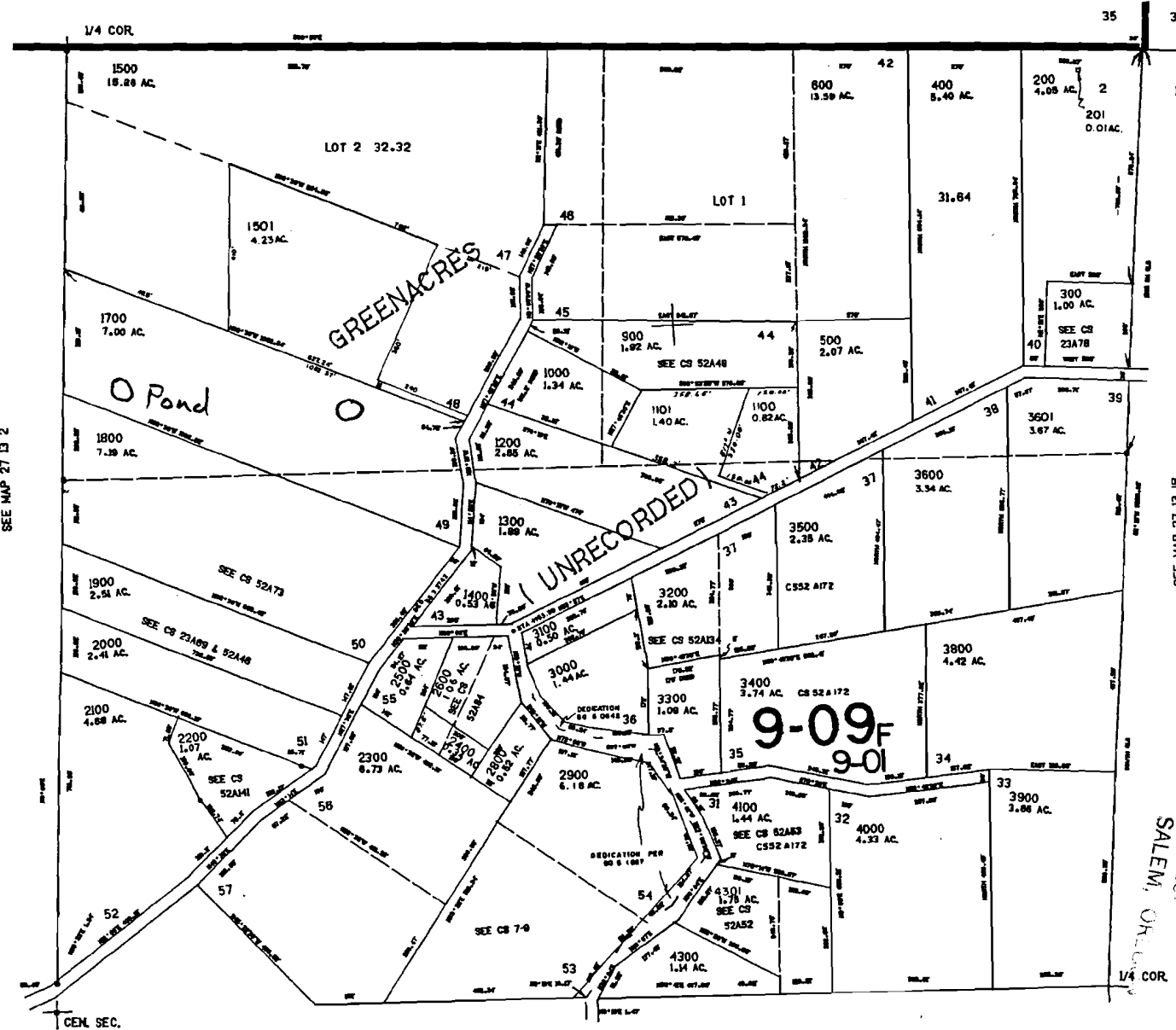
NE1/4 SEC. 2 T.27S. R.13W. W.M.
COOS COUNTY

27 13 2A

1"=200'

THIS MAP WAS PREPARED FOR
ASSESSMENT PURPOSE ONLY.

SEE MAP 26 13 35



CANCELLED
PARCEL 1800
700
800
2700
4200
3700
100

604.000

SEE MAP 27 13 18

WATER RES. DIV.
SALEM, OREGON
JAN - 4 1995

REC'D

REDUCED COPY
NOT TO SCALE

SEP 27 1993
CHANGES UPDATED AS OF

TRACED 11/1/93 CHECKED AS 5-79

70080

Application No. K-76994
Permit No.

CURTIS

SEE MAP 27 13 2DB

SEE MAP 27 13 2DA

27 13 2A

No Final Proof Map available

No Permit Map available