

70906

Application No. R-77114  
Permit No.

RECEIVED  
DEC 29 1994  
WATER RESOURCES DEP.  
SALEM, OREGON

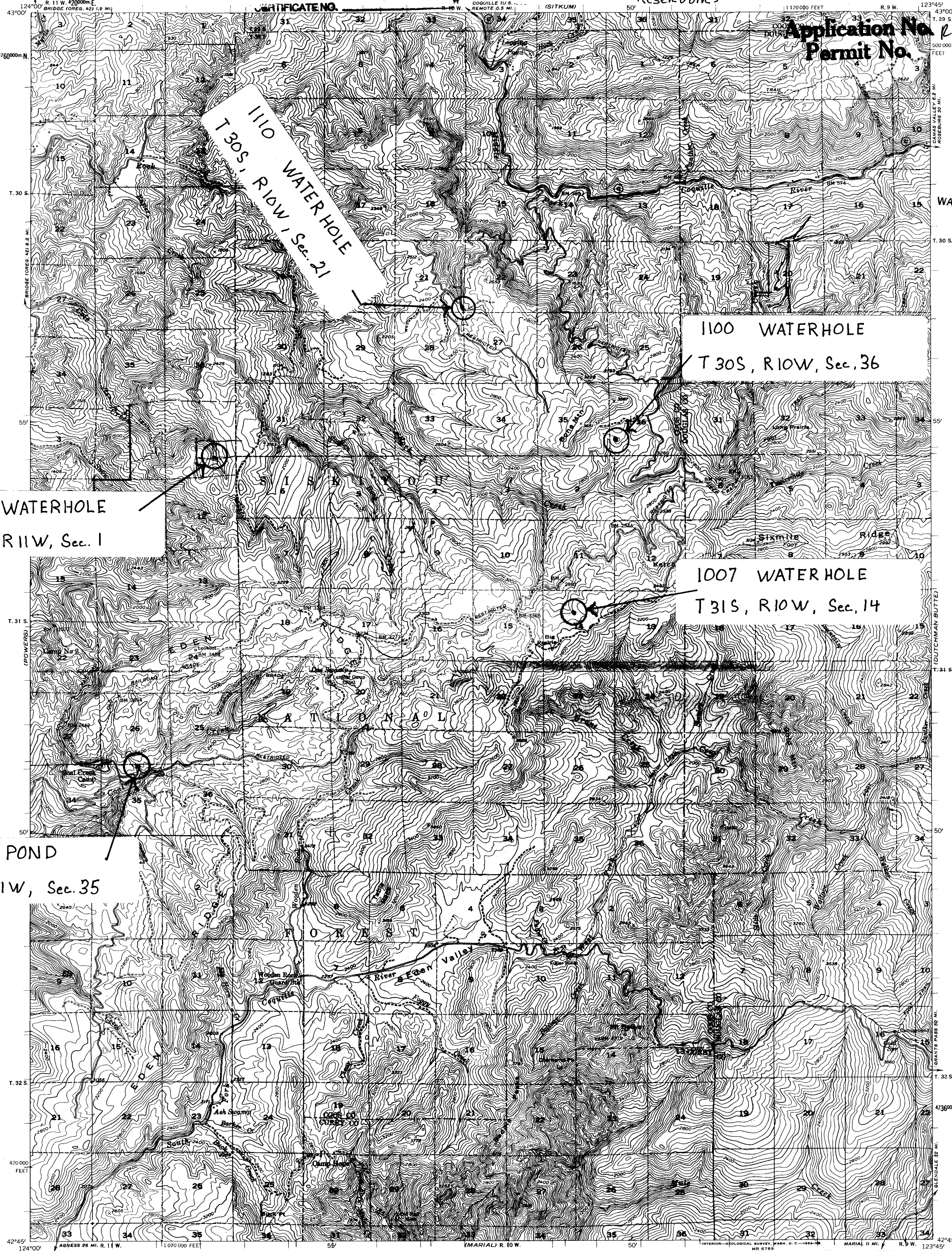
1110 WATER HOLE  
T 30 S, R 10 W, Sec. 21

1100 WATER HOLE  
T 30 S, R 10 W, Sec. 36

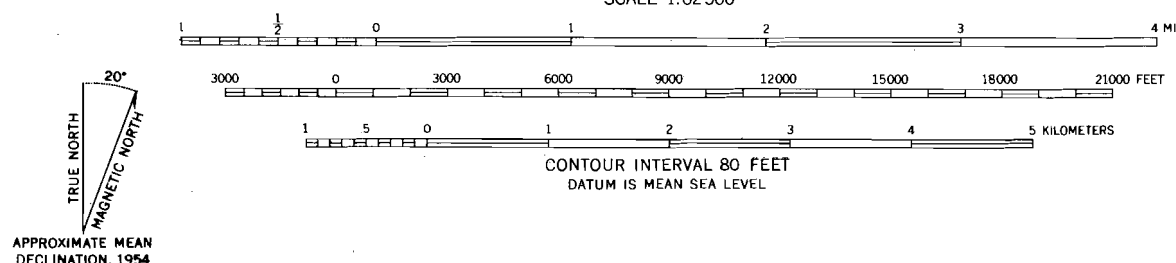
3031 WATER HOLE  
T 31 S, R 11 W, Sec. 1

1007 WATER HOLE  
T 31 S, R 10 W, Sec. 14

DUNN POND  
T 31 S, R 11 W, Sec. 35



Mapped, edited, and published by the Geological Survey  
Control by USGS and USC&GS  
Topography from aerial photographs by multiplex methods  
Aerial photographs taken 1952. Field check 1954  
Polyconic projection. 1927 North American datum  
10,000-foot grid based on Oregon coordinate system, south zone  
1000-meter Universal Transverse Mercator grid ticks,  
zone 10, shown in blue  
Dashed land lines indicate approximate locations  
Unchecked elevations are shown in brown



ROAD CLASSIFICATION  
Heavy-duty ——— Light-duty ———  
Medium-duty ——— Unimproved dirt ———  
U.S. Route □ State Route ○



BONE MOUNTAIN, OREG.  
N 4245 - W 12345 / 15