

This map was prepared for assessment purpose only.

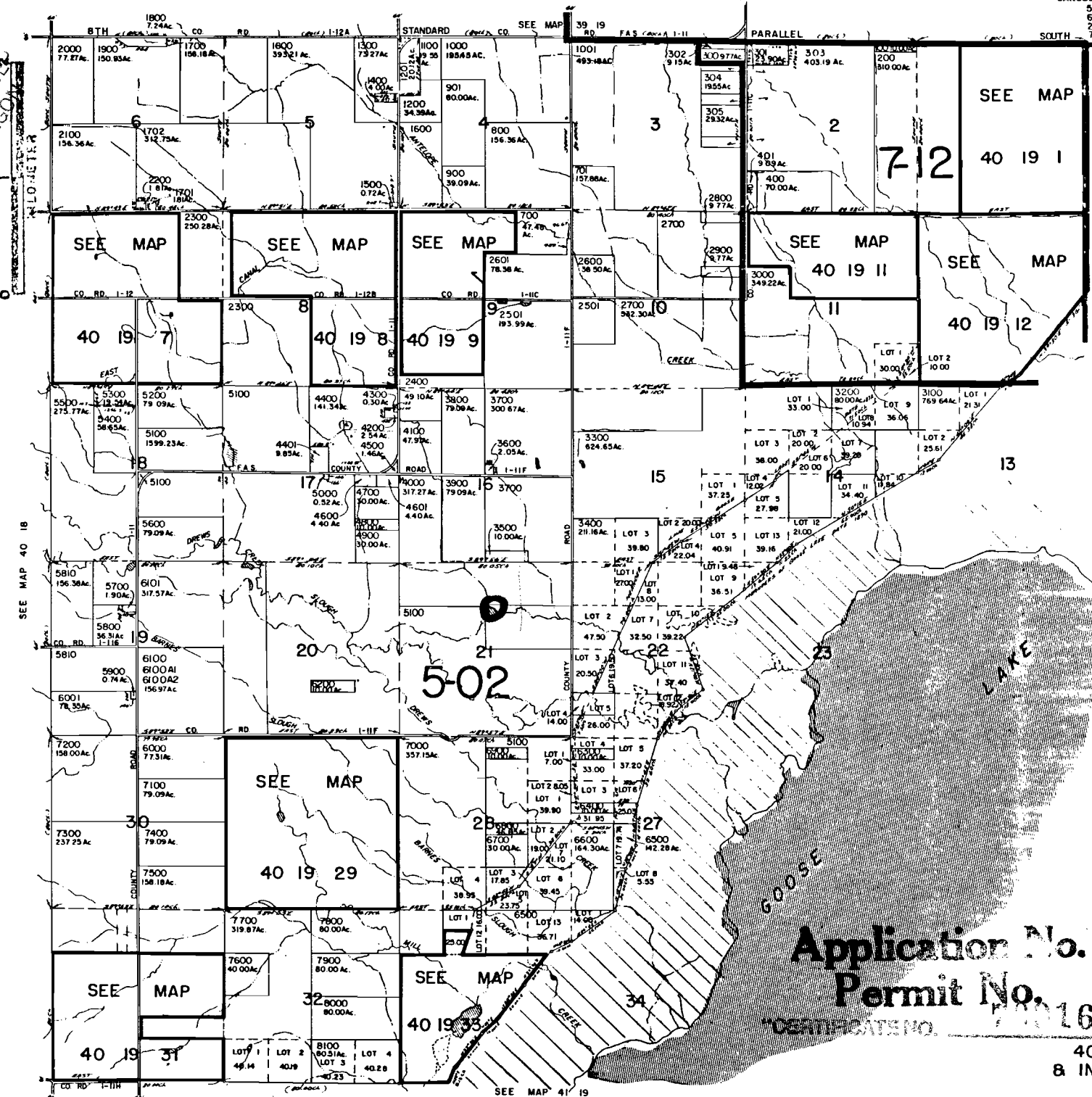
LAKE COUNTY

1" = 2000'

B INDEX 4019

CANCELLED NO 500 7301 600 7302 2500 7300 AI

RECORDED
WATER RES. 401995
SCALED SALEM 2009 4000
FEET PREVIOUS
2,000 0 4000



Application No. R-77139
Permit No. 16
DEPARTMENT NO. 16

40 19
B INDEX

SEE MAP 40 20

SEE MAP 41 19

SEE MAP 40 18

No Final Proof Map available

No Permit Map available