

This map was prepared for assessment purpose only

NW 1/4 SEC. 1 T.27S. R.7W. W.M.

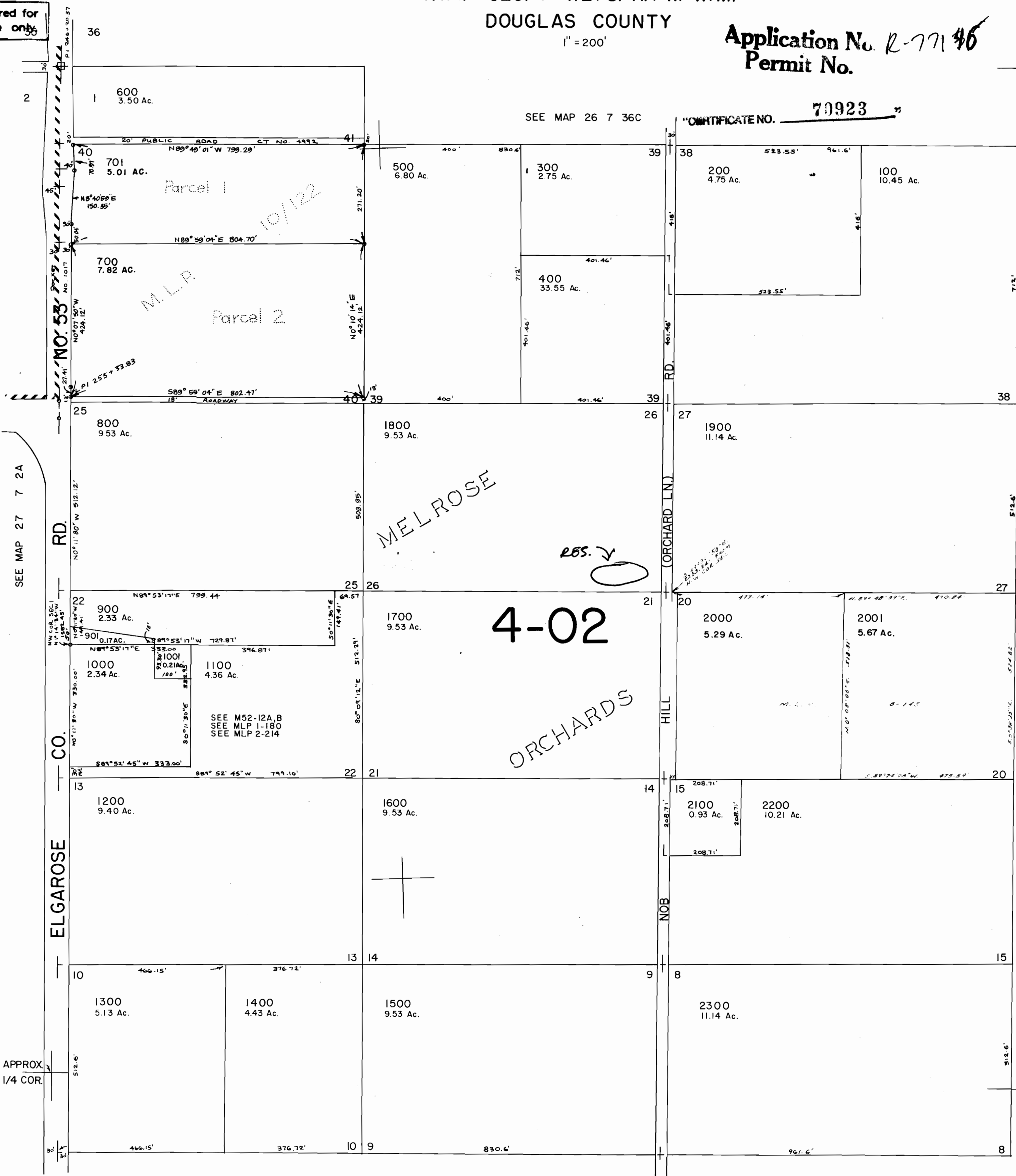
27 7 IB

DOUGLAS COUNTY

1" = 200'

Application No. R-77146
Permit No.

1/4 COR.



RECEIVED
JAN - 4 1995
WATER RESOURCES DEPT.
SALEM, OREGON

592,000

SEE MAP 27 7 IC

27 7 IB

No Final Proof Map available

No Permit Map available