

HURON
#15

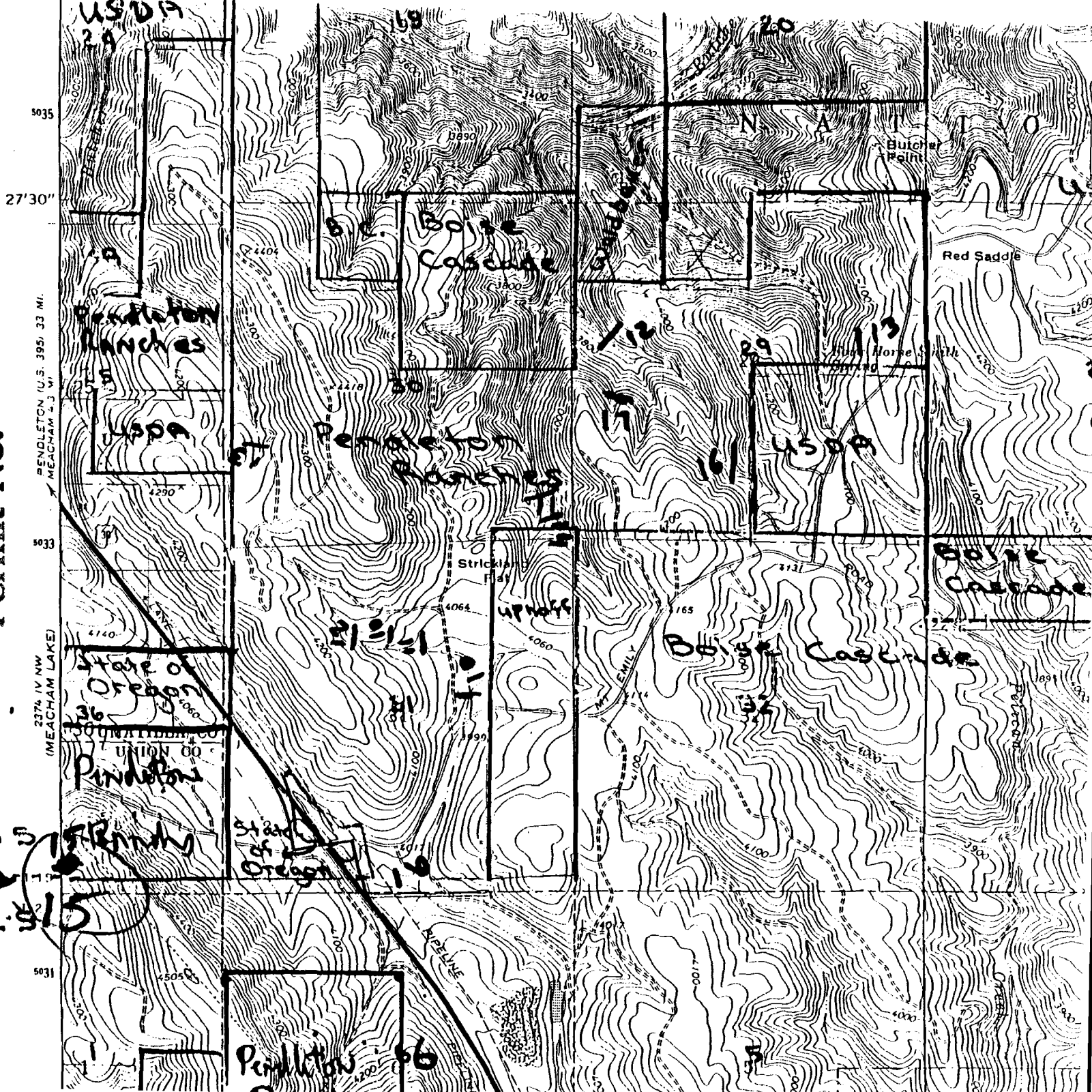
RECEIVED

DEC 30 1994

WATER RESOURCES DEPT.
SALEM, OREGON

CERTIFICATE NO. 70011

Application No. R-77210
Permit No.

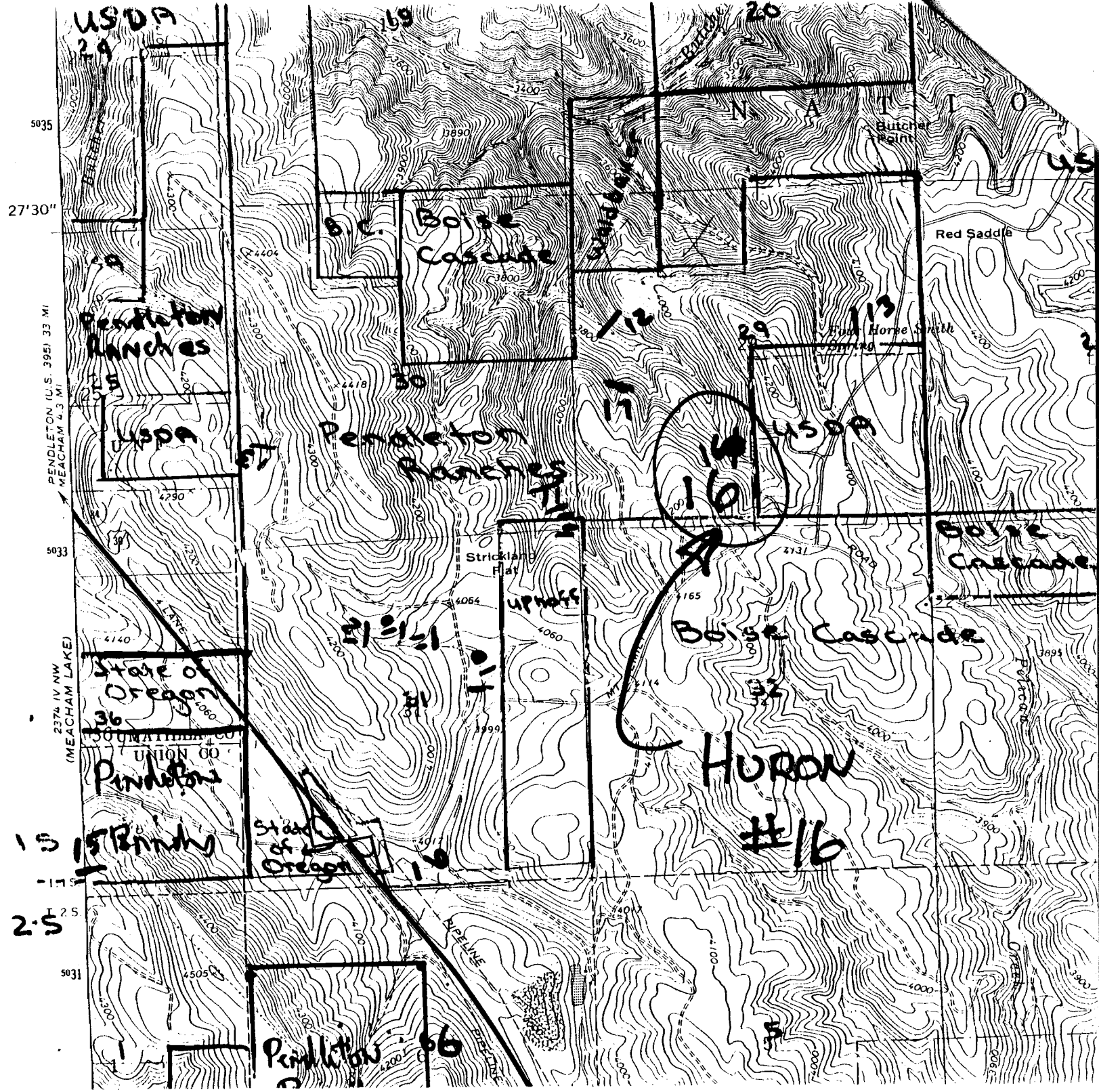


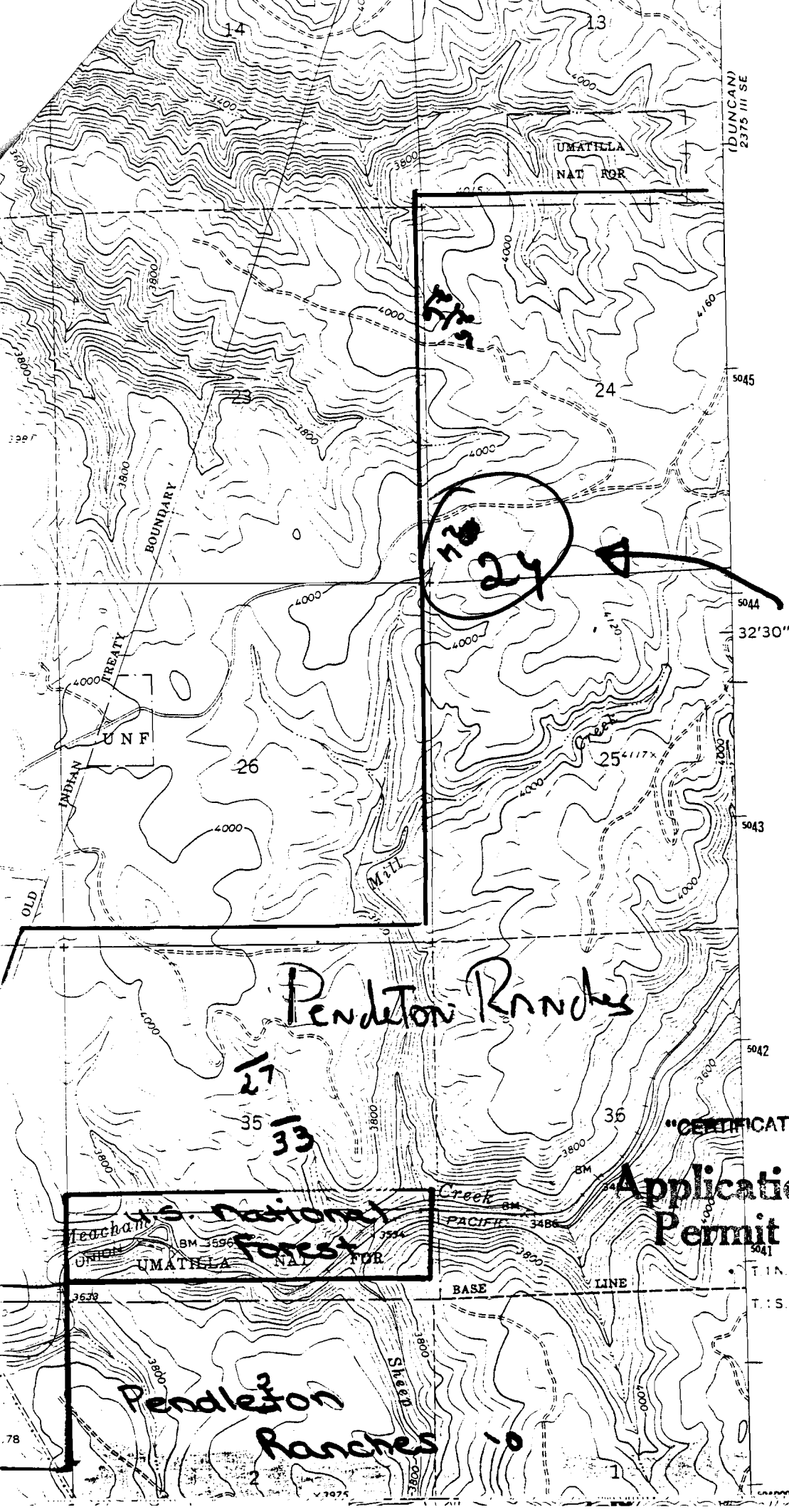
Application No. R-77210
Permit No. _____
"CERTIFICATE NO. _____"

RECEIVED

DEC 30 1994
WATER RESOURCES DEPT.
SALEM, OREGON

T 15
T 11
T 25





RECEIVED

DEC 30 1994

WATER RESOURCES DEPT.
SALEM, OREGON

772

24

*Mechon
#24*

Pendleton Ranches

27

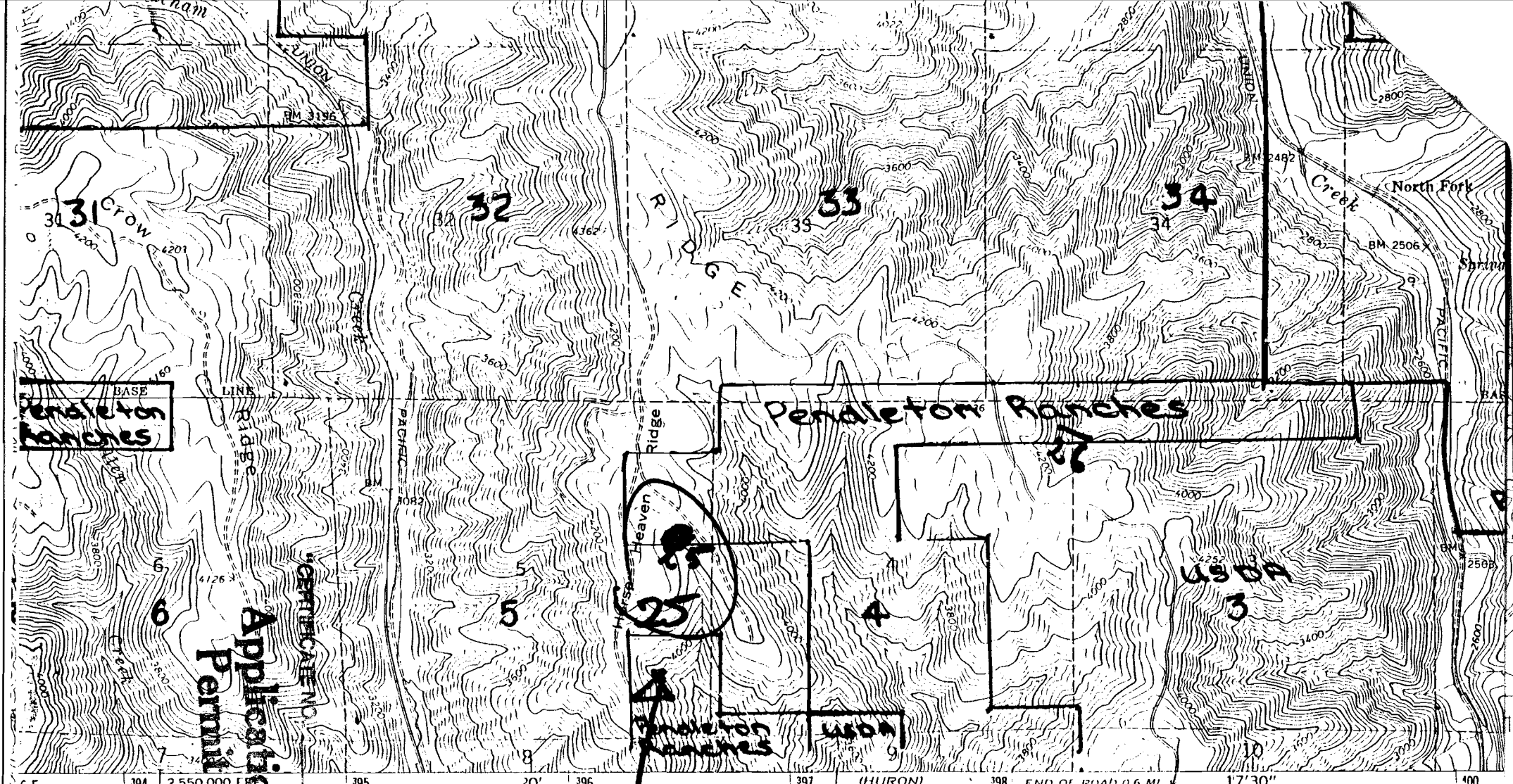
33

"CERTIFICATE NO. 10011"

Application No. R-77210
Permit No.

U.S. National Forest
UMATILLA NAT FOR

Pendleton Ranches



Penaletton Ranches

Penaletton Ranches

Penaletton Ranches

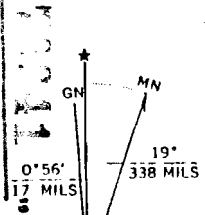
Application No. R-7721D
Permit No.

DUGAN # 25

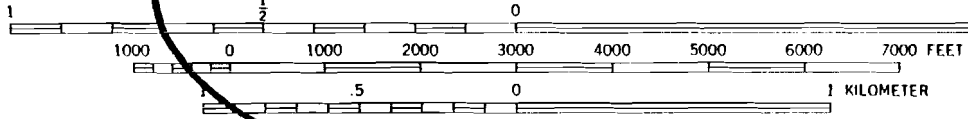
Published by the Geological Survey

1:50,000
 Aerial photographs from 1964
 North American Datum
 Oregon coordinate system,
 Transverse Mercator grid ticks,
 North American Datum 1983
 100 meters north and
 100 meters east corner ticks
 100 meters within the boundaries
 of the section shown on this map

UTM GRID AND 1983 MAGNETIC NORTH DECLINATION AT CENTER OF SHEET



SCALE 1:24 000

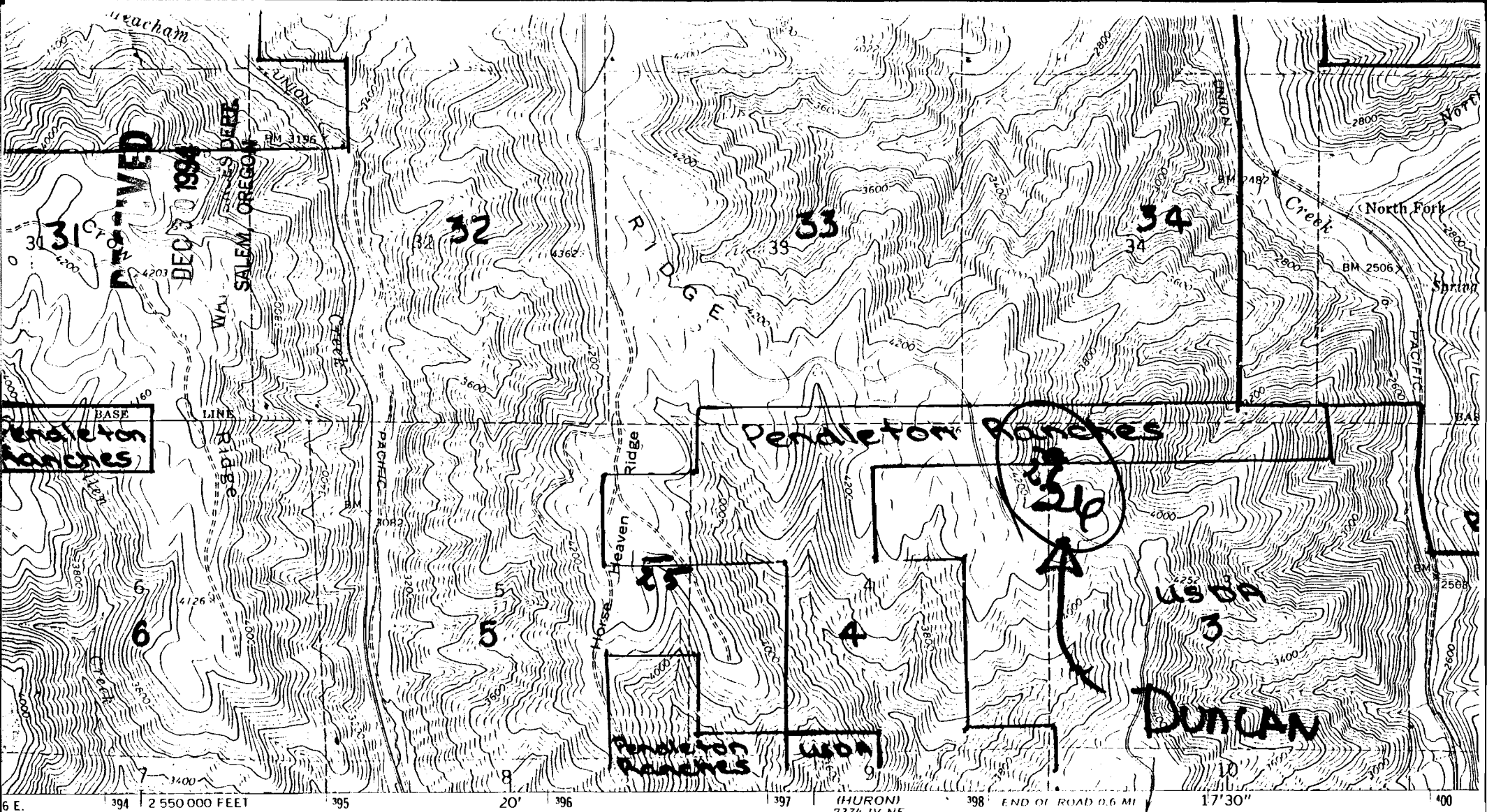


CONTOUR INTERVAL 40 FEET
 NATIONAL GEODETIC VERTICAL DATUM OF 1929

THIS MAP COMPLIES WITH NATIONAL MAP ACCURACY STANDARDS
 FOR SALE BY U. S. GEOLOGICAL SURVEY, DENVER, COLORADO 80225, OR RESTON, VIRGINIA 22092
 A FOLDER DESCRIBING TOPOGRAPHIC MAPS AND SYMBOLS IS AVAILABLE ON REQUEST

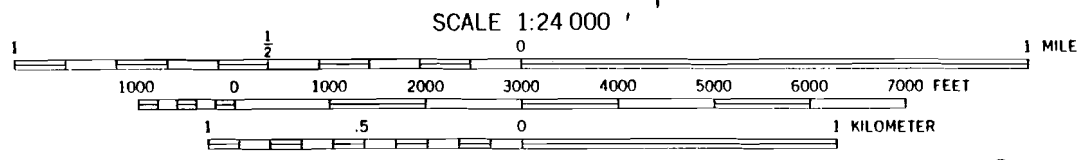
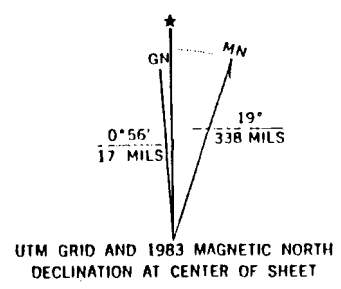
RECEIVED
 DEC 30 1994
 WAILELE
 SALEM, OREGON
 FOREST SERVICE DEPT.

Revisions shown in purple and
 aerial photographs taken 1981
 Partial field check by U. S. For



Published by the Geological Survey

NOAA
 Methods from aerial
 field checked 1964
 North American Datum
 Oregon coordinate system,
 Transverse Mercator grid ticks,
 North American Datum 1983
 and
 ticks
 series



CONTOUR INTERVAL 40 FEET
 NATIONAL GEODETIC VERTICAL DATUM OF 1929

CERTIFICATE NO. 100211
 Application No. R-77210
 Permit No.

THIS MAP COMPLIES WITH NATIONAL MAP ACCURACY STANDARDS
 FOR SALE BY U. S. GEOLOGICAL SURVEY, DENVER, COLORADO 80225, OR RESTON, VIRGINIA 22092
 A FOLDER DESCRIBING TOPOGRAPHIC MAPS AND SYMBOLS IS AVAILABLE ON REQUEST

Revisions shown in purple and
 aerial photographs taken 1981
 Partial field check by U. S. For