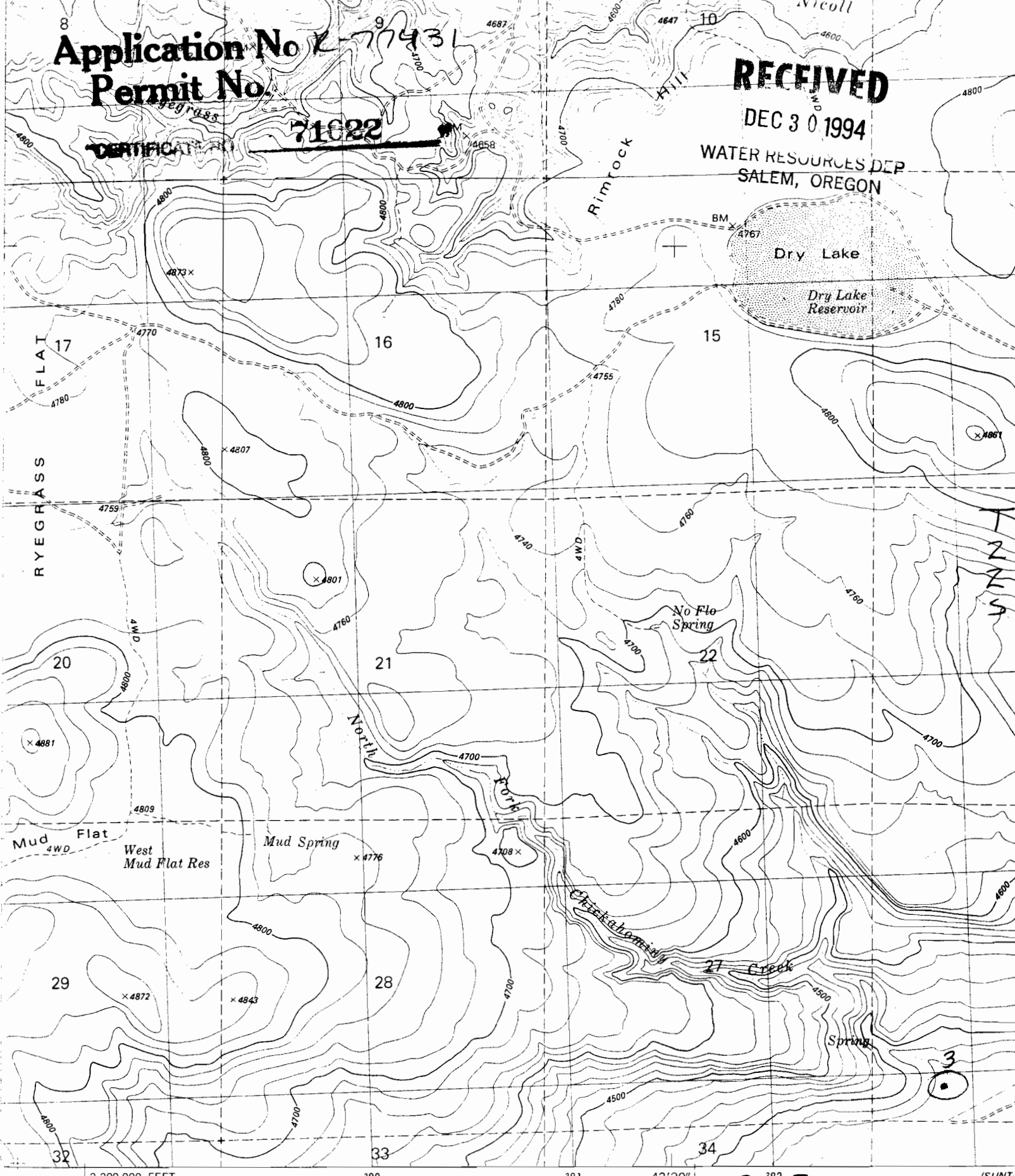


Application No *77431*
Permit No. *71022*

RECEIVED

DEC 30 1994

WATER RESOURCES DEP
SALEM, OREGON



Mapped, edited, and published by the Geological Survey
Control by USGS and NOS/NOAA

Camp Curry Spring
1981 Ed
W. H. Beal



Topography by photogrammetric methods from aerial photographs
from 1974. Field checked 1976. Map edited 1981.

(SUNT)
2071 II

Application No. *R-77431*
Permit No. **71022**

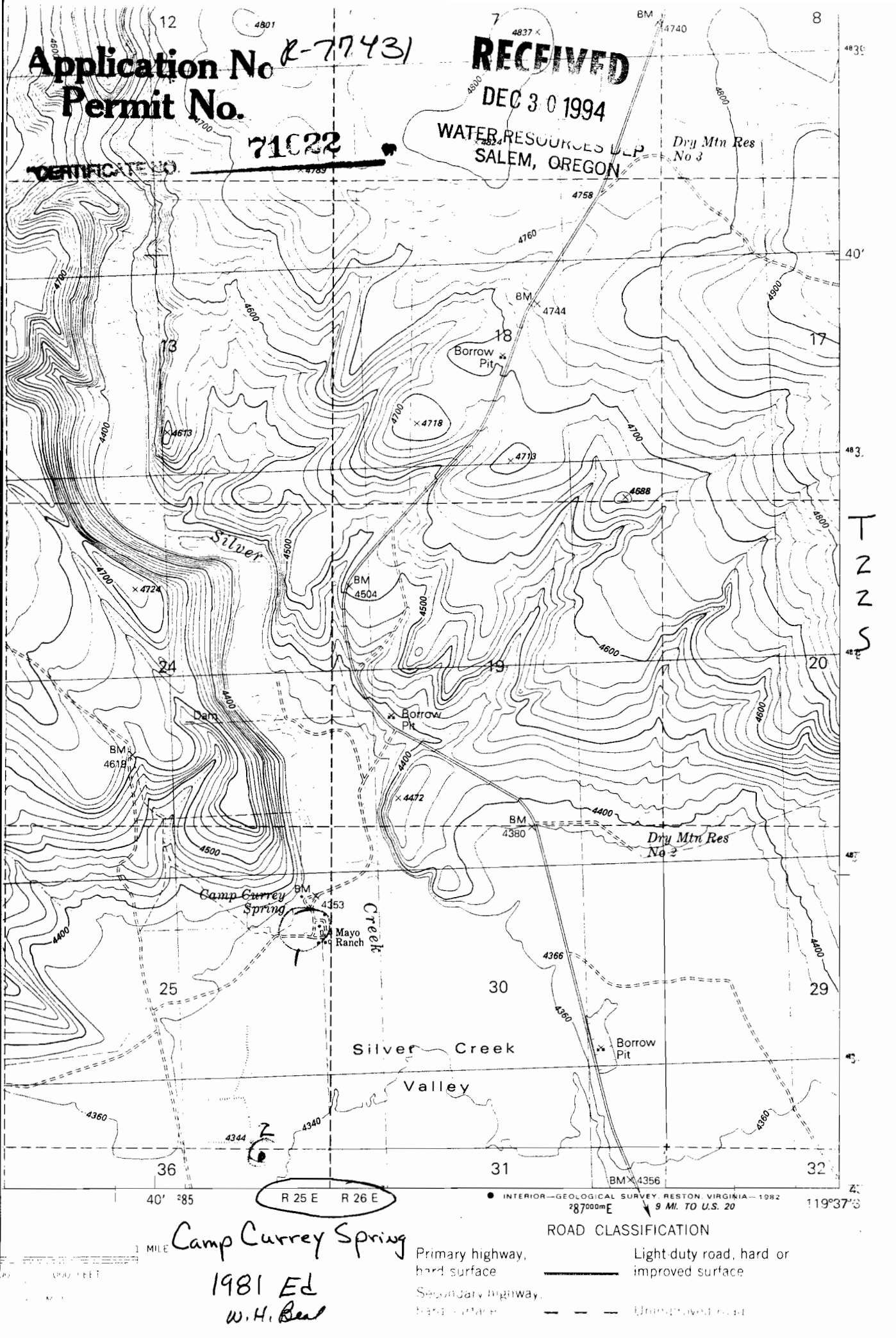
RECEIVED

DEC 30 1994

WATER RESOURCES ULP
SALEM, OREGON

Dry Mtn Res No 3

CERTIFICATE NO. _____



T
2
2
S

R 25 E R 26 E

INTERIOR—GEOLOGICAL SURVEY, RESTON, VIRGINIA—1982
287000m E 9 MI. TO U.S. 20 119°37'3

1 MILE

Camp Currey Spring

1981 Ed
W.H. Beal

ROAD CLASSIFICATION

- Primary highway, hard surface
- Secondary highway, hard surface
- Light duty road, hard or improved surface
- Unimproved road

