

Application No. **11-77432**
Permit No.

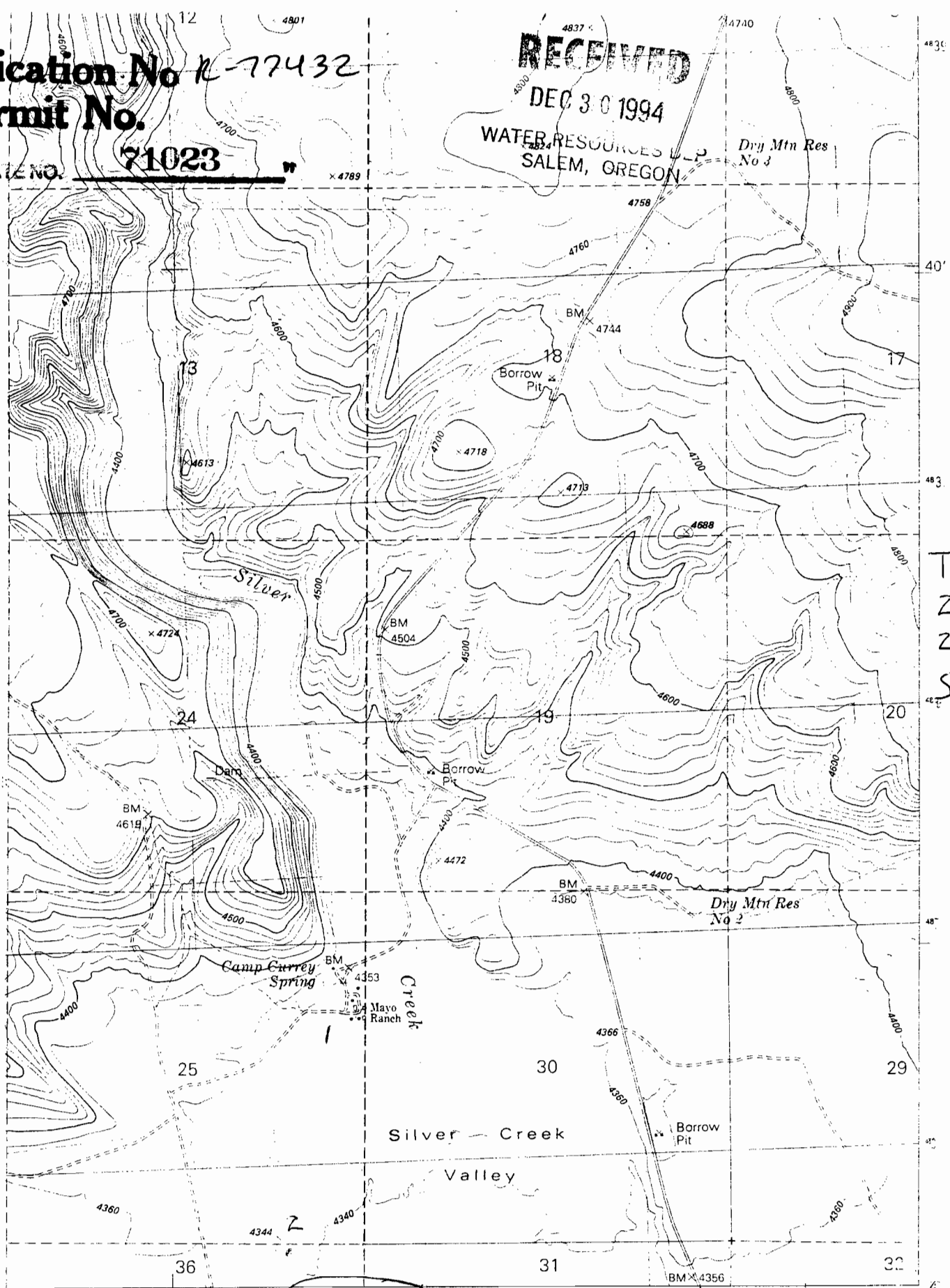
CERTIFICATE NO. **71023**

RECEIVED

DEC 30 1994

WATER RESOURCES DIV.
SALEM, OREGON

Dry Mtn Res No 3



T
2
2
S

R 25 E R 26 E

● INTERIOR—GEOLOGICAL SURVEY RESTON VIRGINIA—1992
287,000m E 9 MI. TO U.S. 20 119°37'

Camp Curry Spring

ROAD CLASSIFICATION

- Primary highway, hard surface
- Light-duty road, hard or improved surface
- Light-duty highway

1981 Ed
W.H. Bear

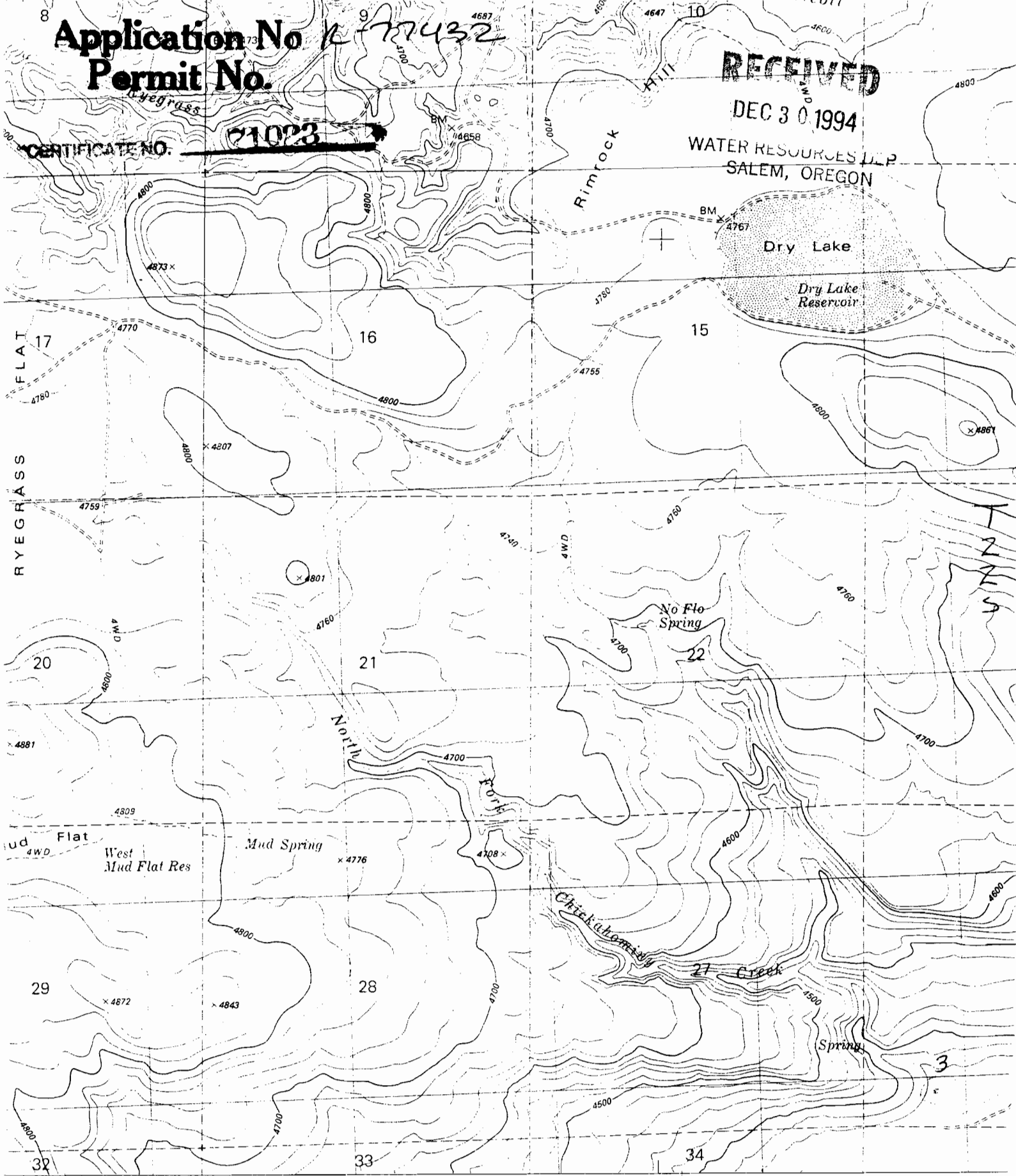
Application No. **177432**
Permit No. **71023**

RECEIVED

DEC 30 1994

WATER RESOURCES DIV.
SALEM, OREGON

CERTIFICATE NO. **71023**



Compiled, edited, and published by the Geological Survey
Control by USGS and NOS/NOAA

Topography by photogrammetric methods from aerial photographs
1981 Edition

Camp Curry Spring
*
1981 Ed.
W.H. Beal

R25E

(SUNT)
2071 II

SCALE 1



