

SCALE 1"=2400



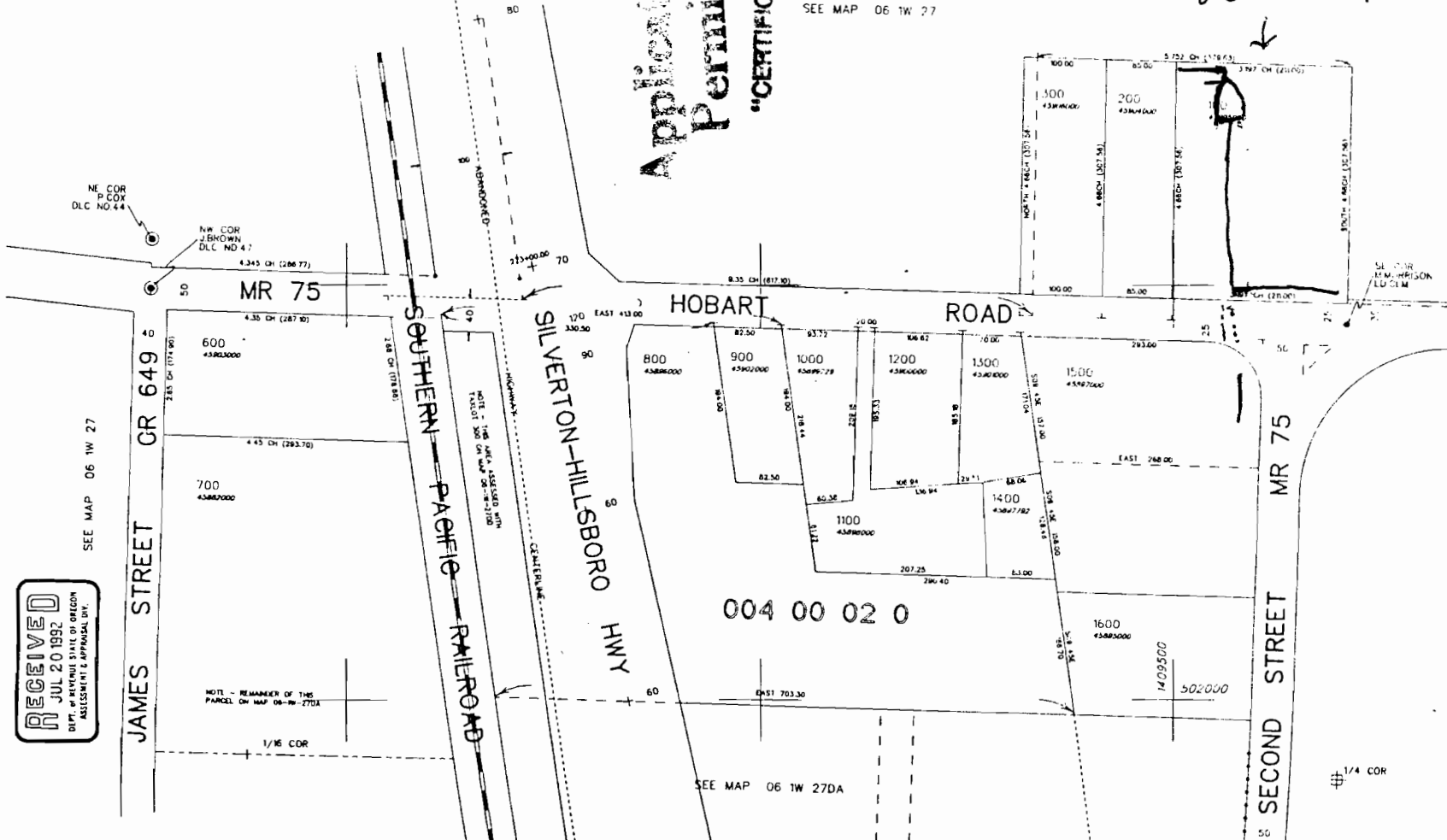
**RECEIVED**

DEC 27 1994

WATER RESOURCES DEPT.  
SALEM, OREGON

Application No. R-77458  
Permit No. 1-4-94  
"CERTIFICATE NO. 1-4-94"

06 1W 27 A D 00100



N  
1"=100'  
22-11N-92

**RECEIVED**  
JUL 20 1992  
DEPT. OF REVENUE STATE OF OREGON  
ASSESSMENT & APPRAISAL DIV.

SEE MAP 06 1W 27

SEE MAP 06 1W 26B

SEE MAP 06 1W 27DA