

RECEIVED

NOV 1 1994

FEB - 7 1995

Application No. R-77473

Permit No. 71060

CERTIFICATE NO. 71060

WATER RESOURCES DIVISION
SELEM, OREGON

County of
Douglas Title Co.
Astoria, Oregon

THIS MAP IS PREPARED FOR
THE PURPOSE OF ASSISTING IN
THE DETERMINATION OF THE COMPANY
HOLDING INTEREST FOR ANY
PROPERTY INTERESTS OR LOANS
WHICH ARE ASCERTAINABLE BY ACTUAL
SURVEY.

Approximate Scale
3 inch = 200 feet
See Map 26-26-5

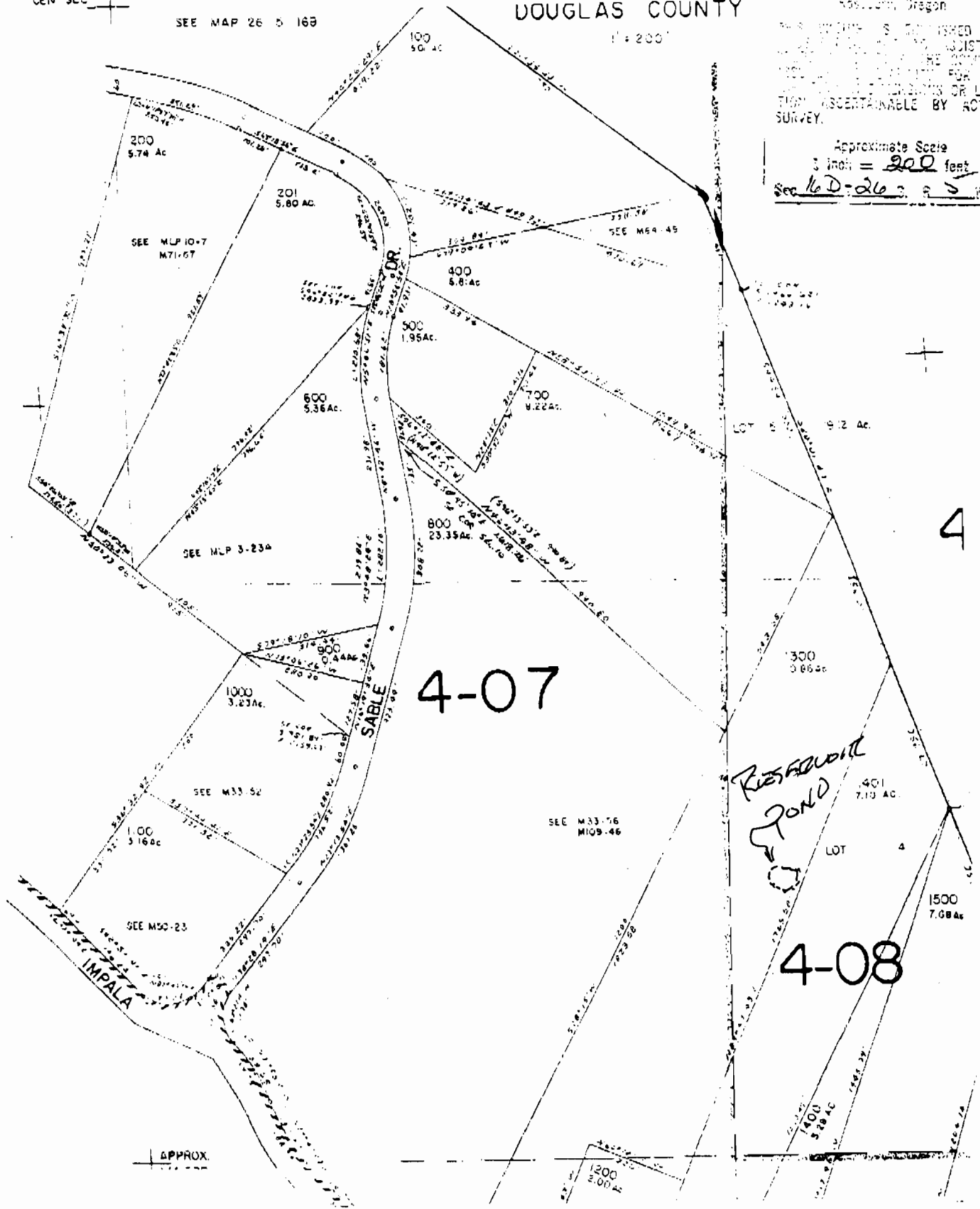
CEN SEC

SEE MAP 26 5 16B

DOUGLAS COUNTY

1:4 200'

SEE MAP 26 5 16C



APPROX.

RESERVOIR
POND

4-07

4-08

4