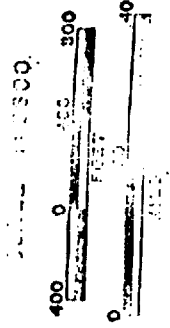


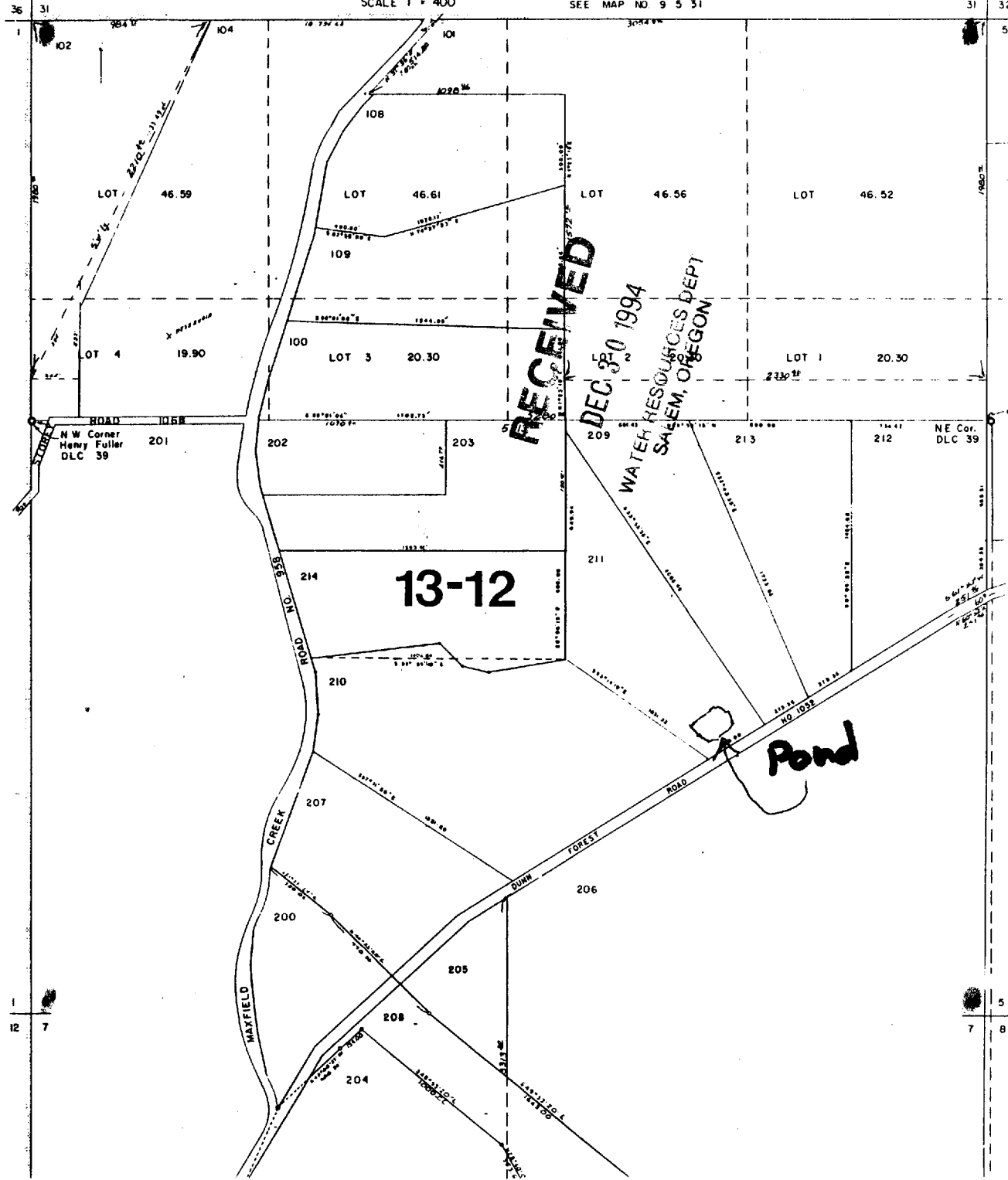
1056



DEAD NO.
TL 105
TL 103
106
107
216
215

SEE MAP NO. 10 6 1

SEE MAP NO. 10 5 5



RECEIVED

DEC 30 1994
WATER RESOURCES DEPT
SALEM, OREGON

13-12

Pond

CERTIFICATE NO. 11002

Application No. 12-77494
Permit No.

12 7

5 8