

Application No R-77833  
 Permit No.

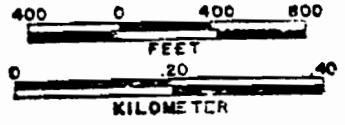
71095

RECEIVED

JAN 3 1995

WATER RESOURCES DEPT.  
 SALEM, OREGON

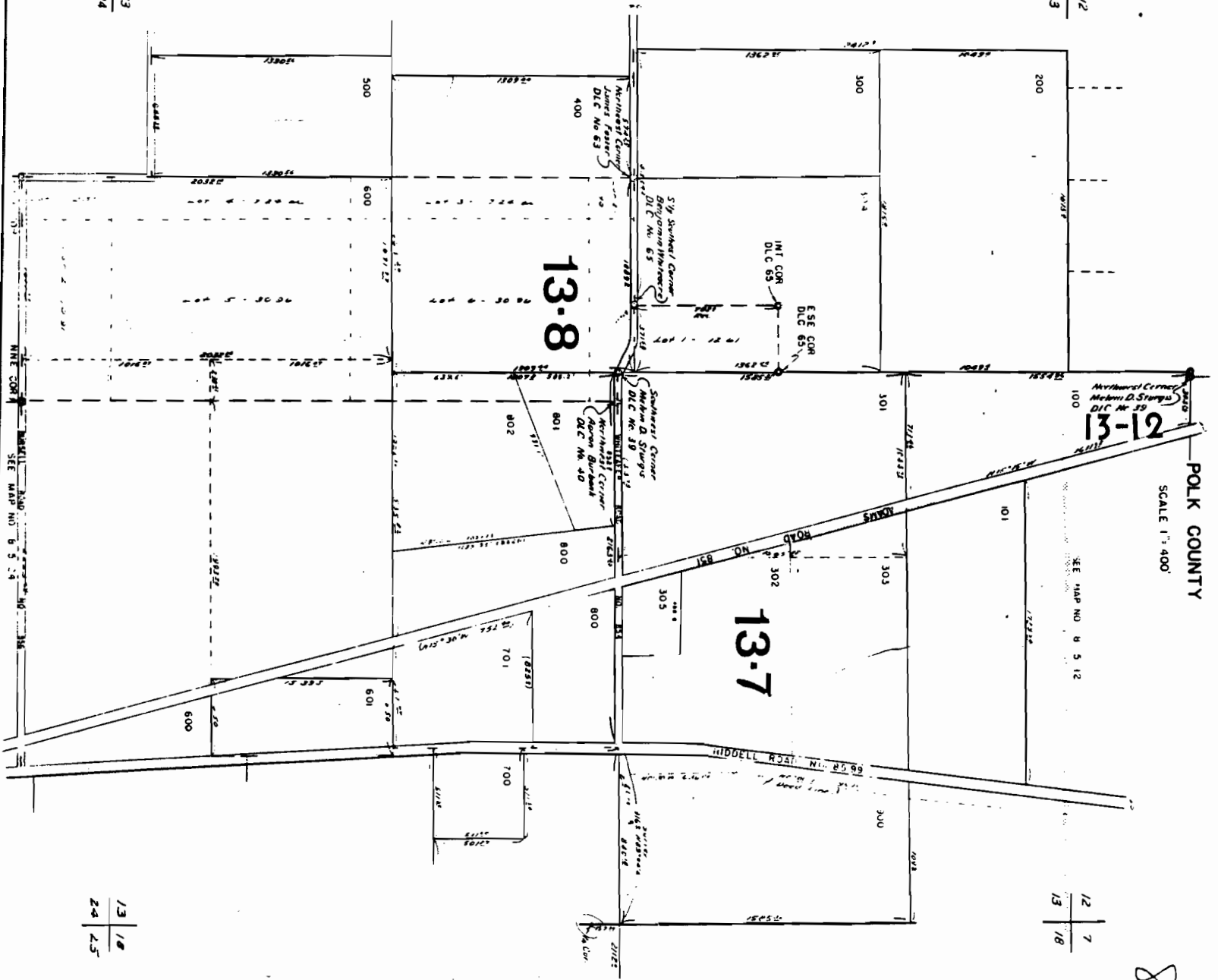
SCALE 1:9600



SEE MAP NO 6 5 14

11  
12  
13  
14

14  
13  
23  
24



SEE MAP NO 6 4 1E

12  
13  
17  
18

13  
18  
24  
25

8513