

SEC. 10 T6SR7WWM

POLK COUNTY

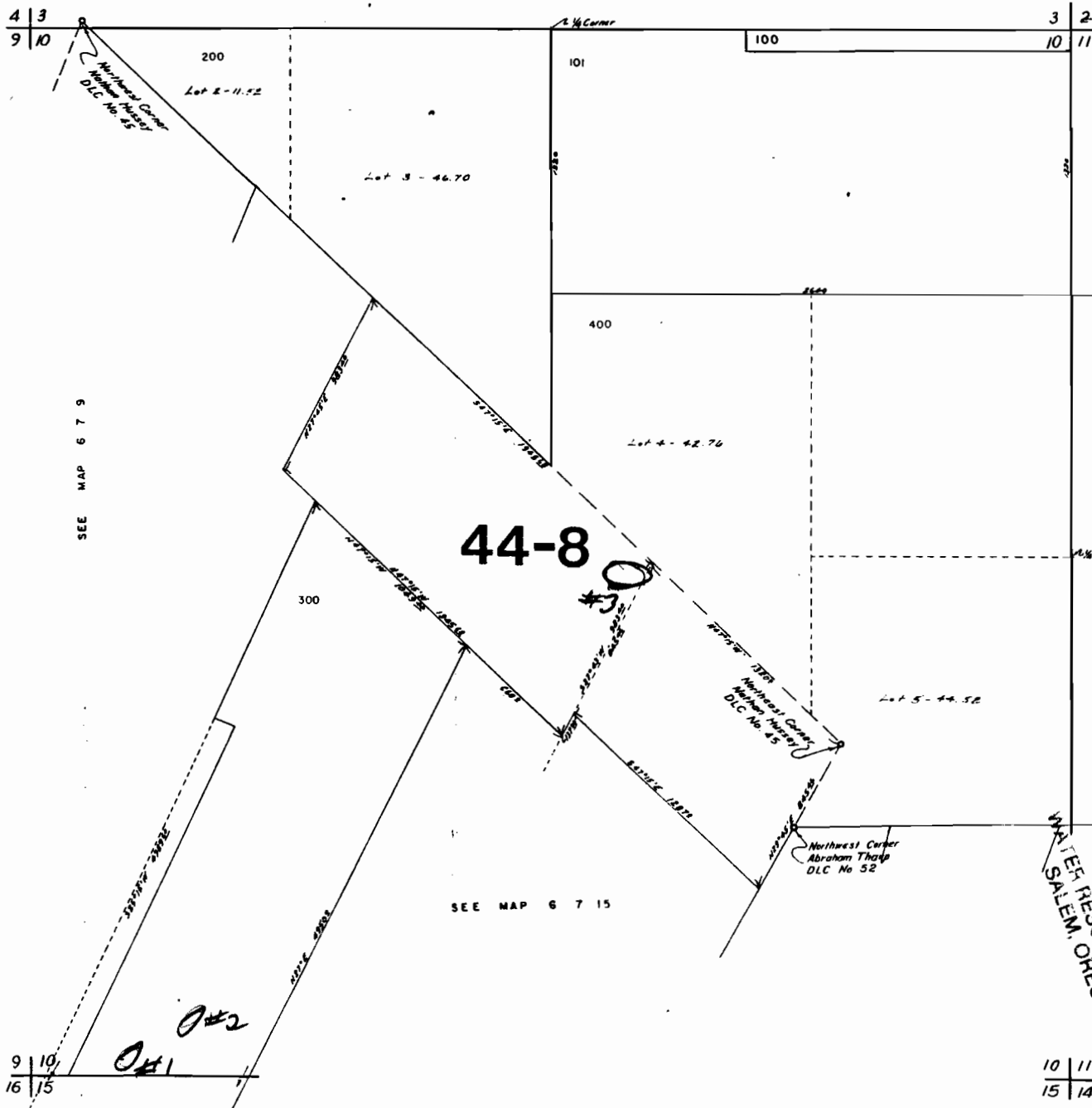
SCALE 1"=400'

Application No. R-77835
Permit No.

6 7 10

ORIGINATOR NO. 71097

SEE MAP NO 6 7 3



DEAD NO.
301

DEAD NUMBERS
T.L. 301

RECEIVED
JAN 3 1995
WATER RESOURCES DEPT.
SALEM, OREGON

SCALE 1"=9600



SEE MAP 6 7 9

SEE MAP NO 6 7 11

SEE MAP 6 7 15

9 | 10
16 | 15

10 | 11
15 | 14

POLK COUNTY

Application No. R-77835 6711

SCALE 1"=400'

Permit No.

SEE MAP NO. 6 7 2

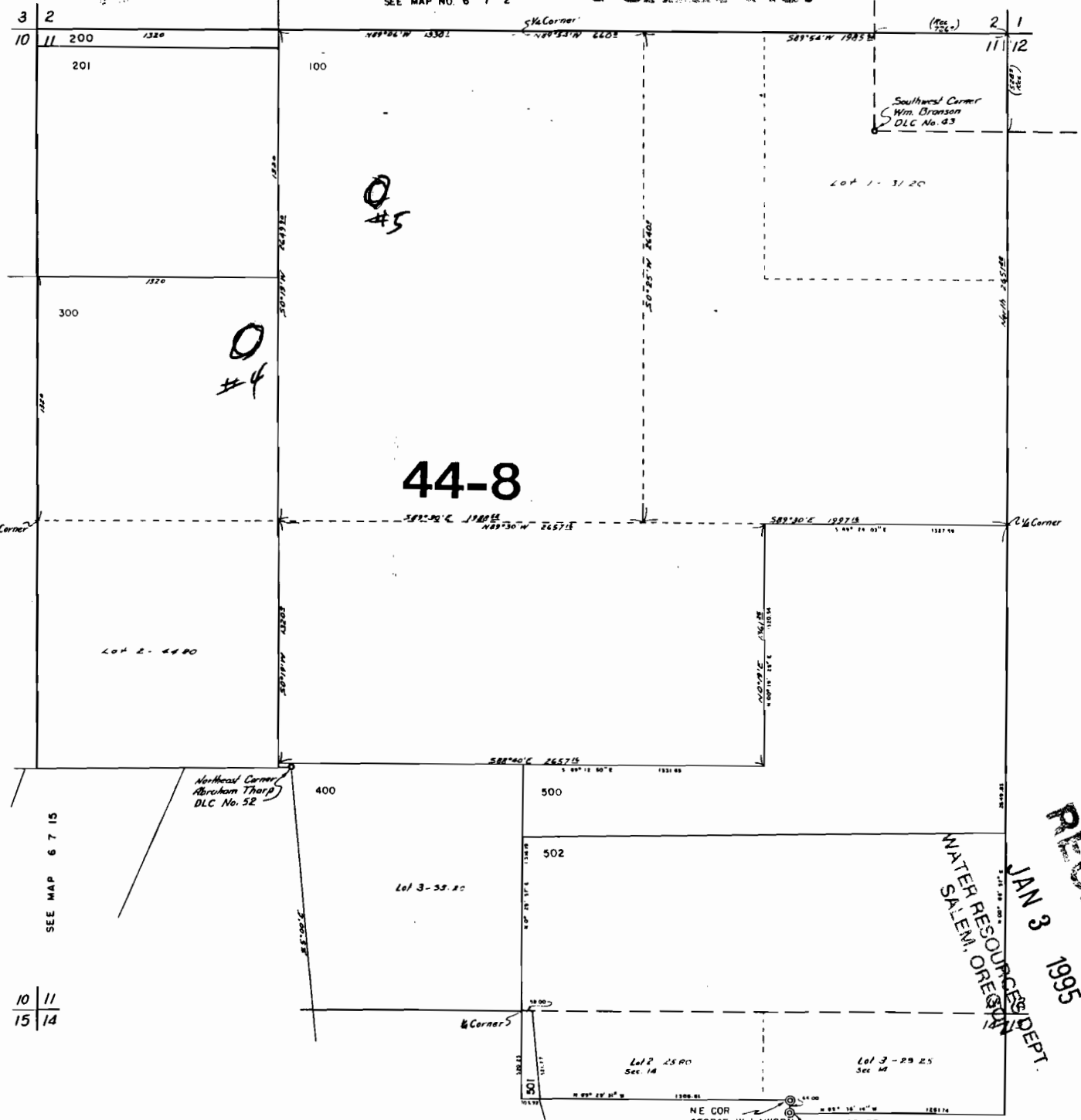
21092

SCALE 1"=6600'



SEE MAP NO 6 7 10

SEE MAP NO 6 7 12



44-8

10 11
15 14

SEE MAP NO 6 7 14

NE COR
GEORGE W LAWSON
DLC No. 49

NW CORNER
DLC No. 49

WATER RESOURCES DEPT.
SALEM, OREGON

RECEIVED
JAN 3 1995