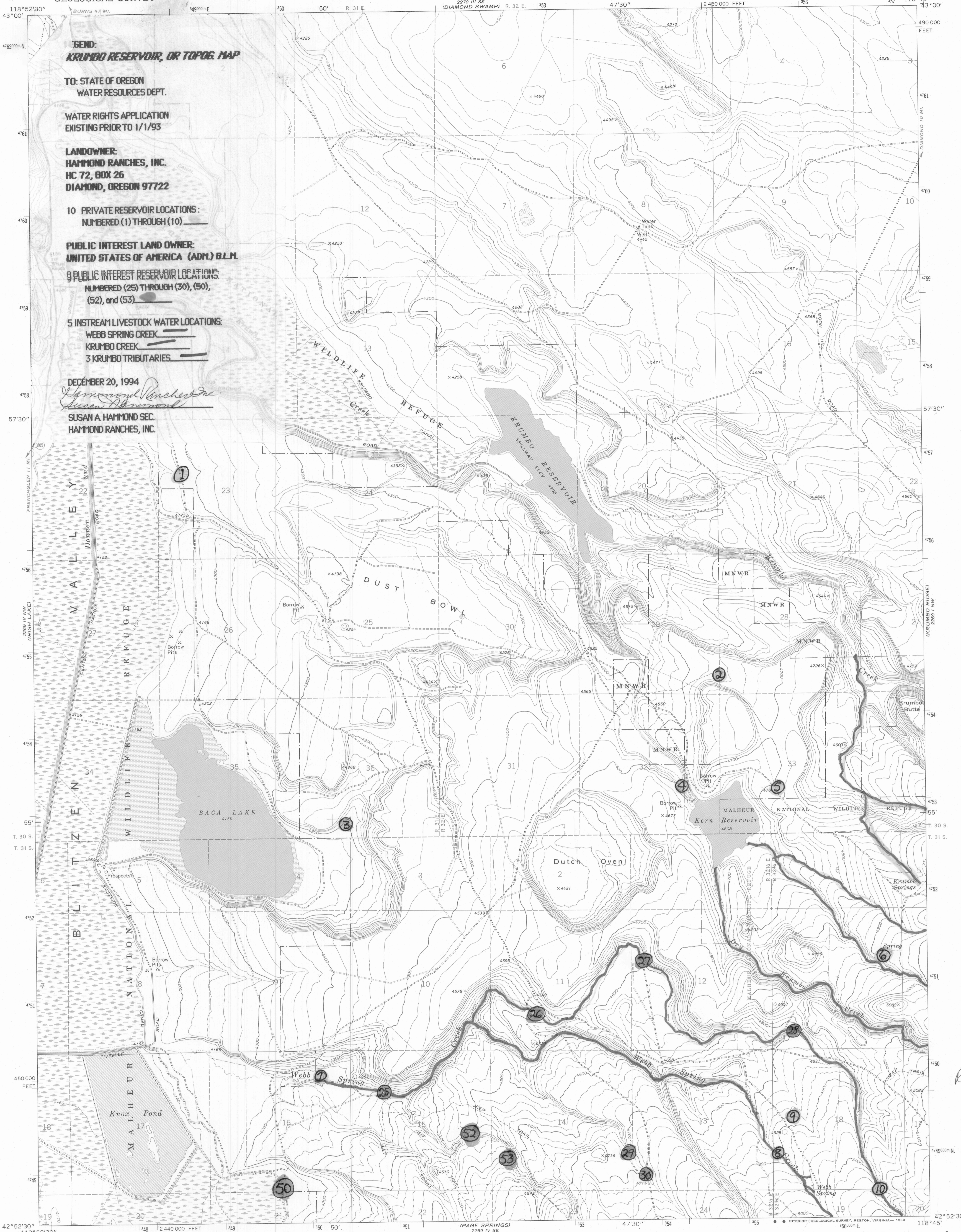


140

UNITED STATES  
DEPARTMENT OF THE INTERIOR  
GEOLOGICAL SURVEY

KRUMBO RESERVOIR QUADRANGLE  
OREGON - HARNEY CO.  
7.5 MINUTE SERIES (TOPOGRAPHIC)



**GEND:**  
**KRUMBO RESERVOIR, OR TOPOG. MAP**

**TO:** STATE OF OREGON  
WATER RESOURCES DEPT.

**WATER RIGHTS APPLICATION**  
EXISTING PRIOR TO 1/1/93

**LANDOWNER:**  
**HAMMOND RANCHES, INC.**  
HC 72, BOX 26  
DIAMOND, OREGON 97722

**10 PRIVATE RESERVOIR LOCATIONS:**  
NUMBERED (1) THROUGH (10)

**PUBLIC INTEREST LAND OWNER:**  
UNITED STATES OF AMERICA (ADM.) B.L.M.

**9 PUBLIC INTEREST RESERVOIR LOCATIONS:**  
NUMBERED (25) THROUGH (30), (50), (52), and (53)

**5 INSTREAM LIVESTOCK WATER LOCATIONS:**  
WEBB SPRING CREEK  
KRUMBO CREEK  
3 KRUMBO TRIBUTARIES

DECEMBER 20, 1994  
*Susan A. Hammond*  
SUSAN A. HAMMOND SEC.  
HAMMOND RANCHES, INC.

Apps. R-77836 & R-77837

R-77836  
77837

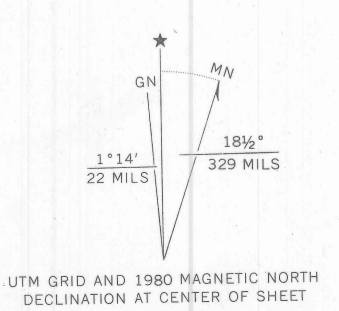
Mapped, edited, and published by the Geological Survey  
Control by USGS and NOS/NOAA

Topography by photogrammetric methods from aerial  
photographs taken 1966. Field checked 1967

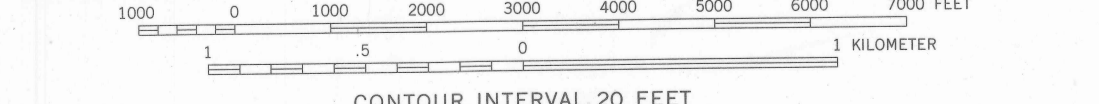
Polycyclic projection. 1927 North American datum  
10,000-foot grid based on Oregon coordinate system,  
south zone  
1000-meter Universal Transverse Mercator grid ticks,  
zone 11, shown in blue

To place on the predicted North American Datum 1983  
move the projection lines 17 meters north and  
84 meters east as shown by dashed corner ticks

There may be private inholdings within the boundaries of  
the National or State reservations shown on this map  
Areas covered by dashed light-blue pattern  
are subject to controlled inundation



SCALE 1:24 000



CONTOUR INTERVAL 20 FEET  
DOTTED LINES REPRESENT 10-FOOT CONTOURS  
NATIONAL GEODETIC VERTICAL DATUM OF 1929

THIS MAP COMPLIES WITH NATIONAL MAP ACCURACY STANDARDS  
FOR SALE BY U. S. GEOLOGICAL SURVEY, DENVER, COLORADO 80225, OR RESTON, VIRGINIA 22092  
A FOLDER DESCRIBING TOPOGRAPHIC MAPS AND SYMBOLS IS AVAILABLE ON REQUEST



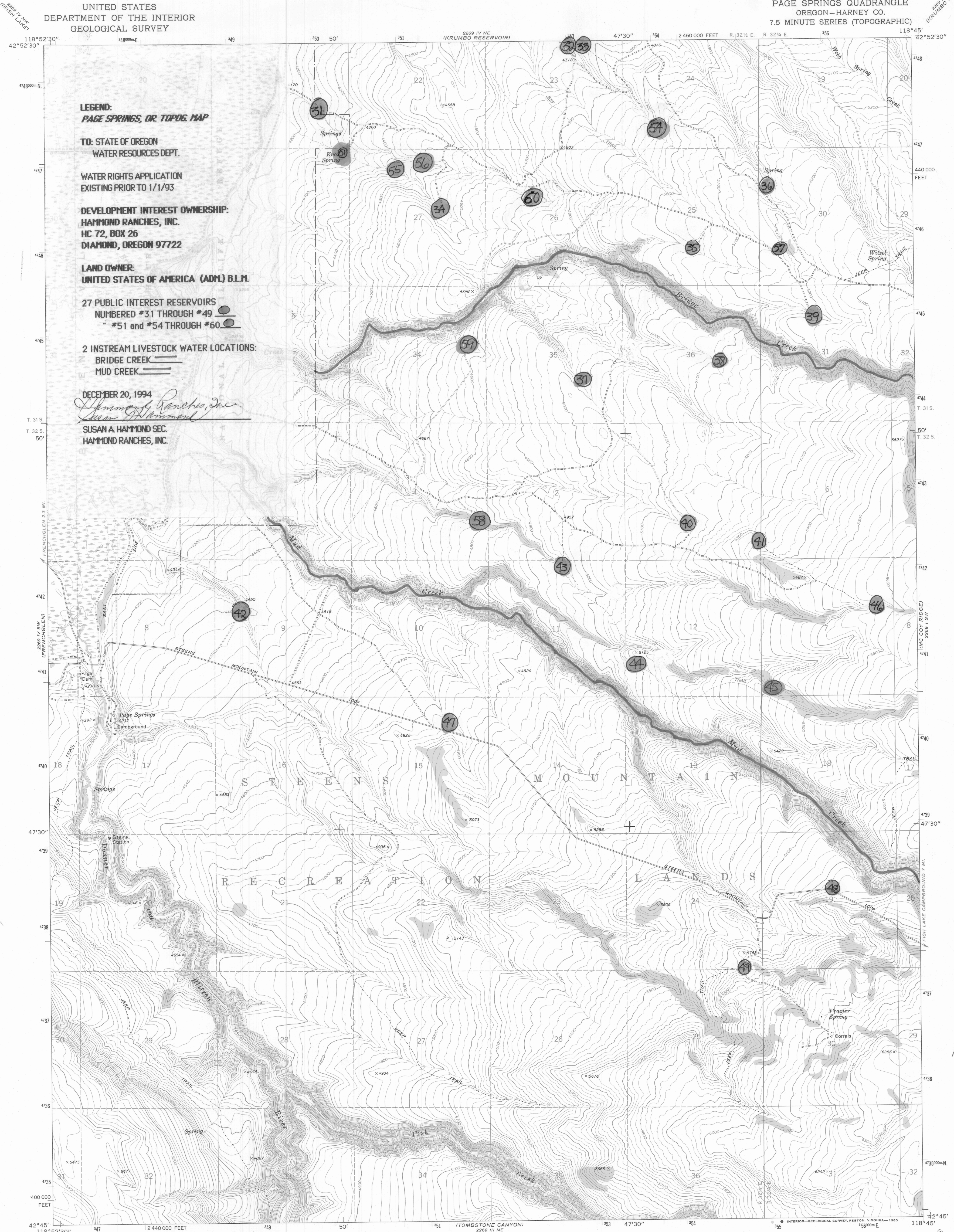
**ROAD CLASSIFICATION**  
Primary highway, hard surface  
Secondary highway, hard surface  
Light-duty road, hard or improved surface  
Unimproved road  
Interstate Route  
U. S. Route  
State Route

KRUMBO RESERVOIR, OREG.  
N4252.5-W11845.7.5

1967  
PHOTOREVISED 1980  
DMA 2269 IV NE-SERIES V892

Revisions shown in purple compiled from aerial photographs  
taken 1979 and other source data. This information not  
field checked. Map edited 1980

RECEIVED  
JAN - 4 1995  
WATER RESOURCES DEPT.  
SALEM, OREGON



**LEGEND:**  
**PAGE SPRINGS, OR. TOPOG. MAP**

**TO: STATE OF OREGON  
WATER RESOURCES DEPT.**

**WATER RIGHTS APPLICATION  
EXISTING PRIOR TO 1/1/93**

**DEVELOPMENT INTEREST OWNERSHIP:  
HAMMOND RANCHES, INC.  
HC 72, BOX 26  
DIAMOND, OREGON 97722**

**LAND OWNER:  
UNITED STATES OF AMERICA (ADM.) BLM.**

**27 PUBLIC INTEREST RESERVOIRS  
NUMBERED #31 THROUGH #49  
\* #51 and #54 THROUGH #60.**

**2 INSTREAM LIVESTOCK WATER LOCATIONS:  
BRIDGE CREEK  
MUD CREEK**

DECEMBER 20, 1994  
*Susan A. Hammond*  
**SUSAN A. HAMMOND SEC.  
HAMMOND RANCHES, INC.**

Mapped, edited, and published by the Geological Survey  
Control by USGS and NOS/NOAA

Topography by photogrammetric methods from aerial  
photographs taken 1966 and planetable surveys 1967

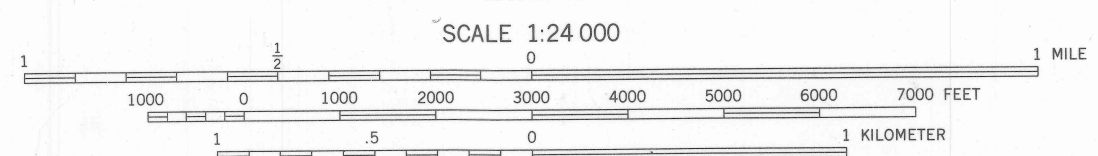
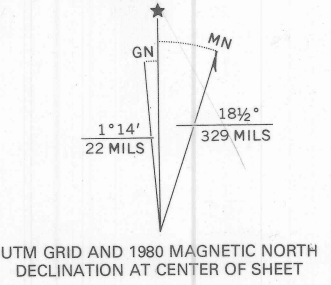
Polygonic projection. 1927 North American datum  
10,000-foot grid based on Oregon coordinate system,  
south zone

1000-meter Universal Transverse Mercator grid ticks,  
zone 11, shown in blue

To place on the predicted North American Datum 1983  
move the projection lines 17 meters north and  
84 meters east as shown by dashed corner ticks

There may be private inholdings within the boundaries of  
the National or State reservations shown on this map

Fine red dashed lines indicate selected fence lines



CONTOUR INTERVAL 20 FEET  
DOTTED LINES REPRESENT 10-FOOT CONTOURS  
NATIONAL GEODETIC VERTICAL DATUM OF 1929

THIS MAP COMPLIES WITH NATIONAL MAP ACCURACY STANDARDS  
FOR SALE BY U. S. GEOLOGICAL SURVEY, DENVER, COLORADO 80225, OR RESTON, VIRGINIA 22092  
A FOLDER DESCRIBING TOPOGRAPHIC MAPS AND SYMBOLS IS AVAILABLE ON REQUEST



ROAD CLASSIFICATION  
Light-duty ..... Unimproved dirt .....

1967  
PHOTOREVISED 1980  
DMA 2269 IV SE—SERIES V892

**RECEIVED**  
JAN - 4 1995  
PAGE SPRINGS, OREGON WATER RESOURCES DEPT.  
N4245—W11845/7.5 SALEM, OREGON

Revisions shown in purple compiled from aerial photographs  
taken 1979 and other source data. This information not  
field checked. Map edited 1980

140  
26 BLM  
Apps. R-77836 & R-77837

R 77836  
77837

140

UNITED STATES  
DEPARTMENT OF THE INTERIOR  
GEOLOGICAL SURVEY

MC COY RIDGE QUADRANGLE  
OREGON—HARNEY CO.  
7.5 MINUTE SERIES (TOPOGRAPHIC)

POISON SPRINGS  
2269 NW (KILBO RIDGE)

118° 45' 118° 37' 30" 2500 000 FEET 42° 52' 30" 42° 52' 30"

**LEGEND:**  
**MC COY RIDGE, OR. TOPOG. MAP.**

**TO: STATE OF OREGON  
 WATER RESOURCES DEPT.**

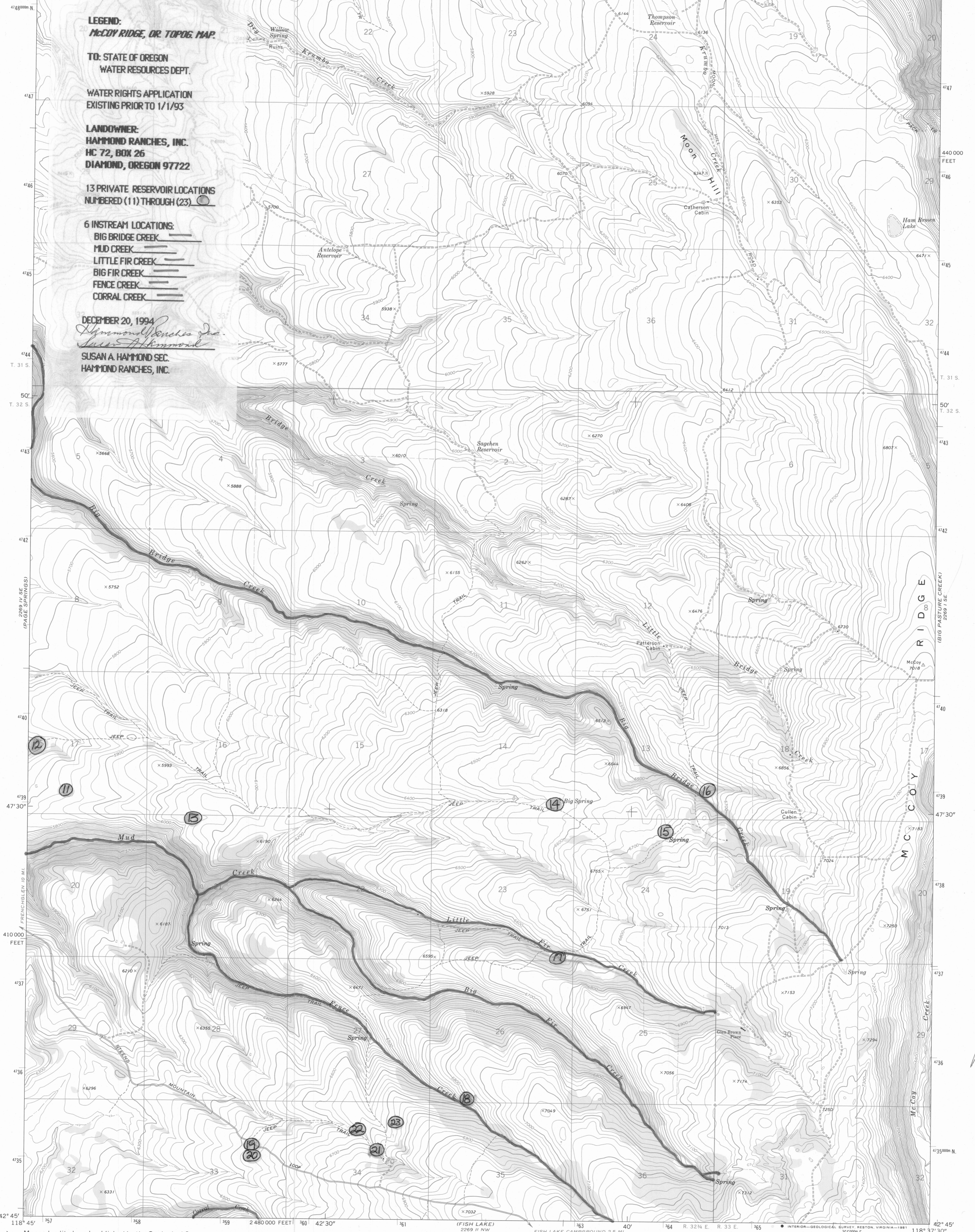
**WATER RIGHTS APPLICATION  
 EXISTING PRIOR TO 1/1/93**

**LANDOWNER:  
 HAMMOND RANCHES, INC.  
 HC 72, BOX 26  
 DIAMOND, OREGON 97722**

**13 PRIVATE RESERVOIR LOCATIONS  
 NUMBERED (11) THROUGH (23)**

**6 INSTREAM LOCATIONS:  
 BIG BRIDGE CREEK  
 MUD CREEK  
 LITTLE FIR CREEK  
 BIG FIR CREEK  
 FENCE CREEK  
 CORRAL CREEK**

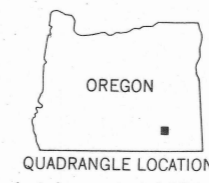
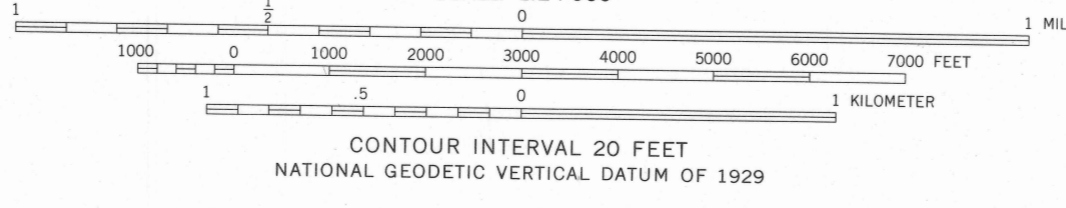
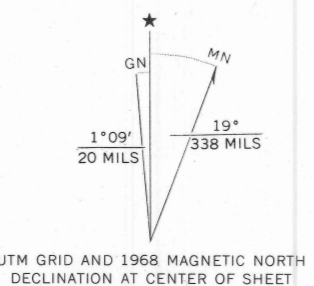
DECEMBER 20, 1994  
*Susan A. Hammond*  
 SUSAN A. HAMMOND SEC.  
 HAMMOND RANCHES, INC.



Apps. R-77836 & R-77837

R-77836  
-77837

Mapped, edited, and published by the Geological Survey  
 Control by USGS and USC&GS  
 Topography by photogrammetric methods from aerial  
 photographs taken 1966 Field checked 1968  
 Polyconic projection. 1927 North American datum  
 10,000-foot grid based on Oregon coordinate system,  
 south zone  
 1000-meter Universal Transverse Mercator grid ticks,  
 zone 11, shown in blue  
 To place on the predicted North American Datum 1983,  
 move the projection lines 17 meters north and  
 83 meters east as shown by dashed corner ticks  
 Fine red dashed lines indicate selected fence lines



**ROAD CLASSIFICATION**

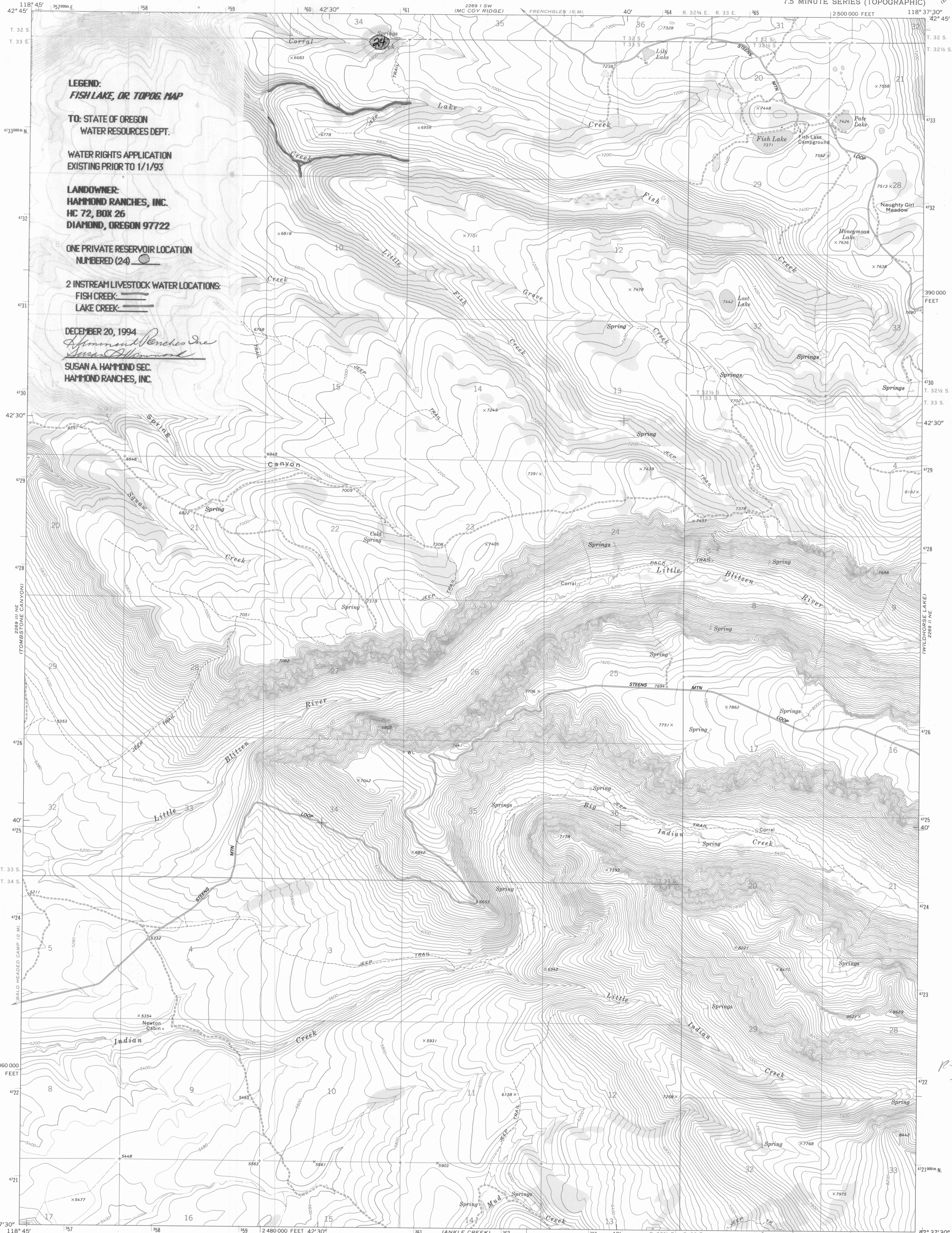
Primary highway, hard surface  
 Secondary highway, hard surface  
 Light-duty road, hard or improved surface  
 Unimproved road

○ Interstate Route  
 □ U. S. Route  
 ○ State Route

THIS MAP COMPLIES WITH NATIONAL MAP ACCURACY STANDARDS  
 FOR SALE BY U. S. GEOLOGICAL SURVEY, DENVER, COLORADO 80225, OR RESTON, VIRGINIA 22092  
 A FOLDER DESCRIBING TOPOGRAPHIC MAPS AND SYMBOLS IS AVAILABLE ON REQUEST

MC COY RIDGE, OREG.  
 N4245—W11837.5/7.5  
 1968  
 PHOTOINSPECTED 1979  
 DMA 2269 1 SW—SERIES V892

**RECEIVED**  
 JAN - 4 1995  
 WATER RESOURCES DEPT.  
 SALEM, OREGON



**LEGEND:**  
**FISH LAKE, OR TOPOG. MAP**

**TO: STATE OF OREGON  
WATER RESOURCES DEPT.**

**WATER RIGHTS APPLICATION  
EXISTING PRIOR TO 1/1/93**

**LANDOWNER:  
HAMMOND RANCHES, INC.  
HC 72, BOX 26  
DIAMOND, OREGON 97722**

**ONE PRIVATE RESERVOIR LOCATION  
NUMBERED (24)**

**2 INSTREAM LIVESTOCK WATER LOCATIONS:  
FISH CREEK: [Symbol]  
LAKE CREEK: [Symbol]**

**DECEMBER 20, 1994**  
*Susan A. Hammond*  
**SUSAN A. HAMMOND SEC.  
HAMMOND RANCHES, INC.**

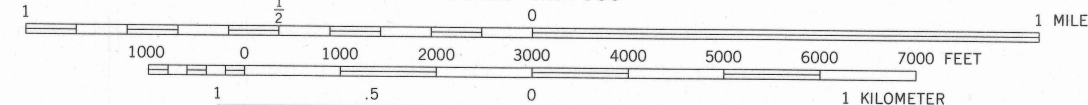
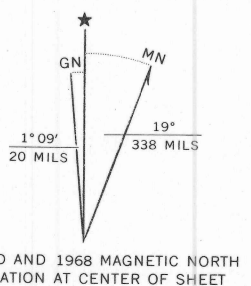
Mapped, edited, and published by the Geological Survey  
Control by USGS and USC&GS

Topography by photogrammetric methods from aerial  
photographs taken 1966. Field checked 1968

Polyconic projection. 1927 North American datum  
10,000-foot grid based on Oregon coordinate system,  
south zone  
1000-meter Universal Transverse Mercator grid ticks,  
zone 11, shown in blue

To place on the predicted North American Datum 1983  
move the projection lines 17 meters north and  
83 meters east as shown by dashed corner ticks

There may be private inholdings within the boundaries of  
the National or State reservations shown on this map



SCALE 1:24,000  
CONTOUR INTERVAL 40 FEET  
DOTTED LINES REPRESENT 20-FOOT CONTOURS  
NATIONAL GEODETIC VERTICAL DATUM OF 1929



**ROAD CLASSIFICATION**  
Primary highway, hard surface ——— Light-duty road, hard or improved surface ———  
Secondary highway, hard surface ——— Unimproved road ———  
○ Interstate Route □ U. S. Route ○ State Route

**FISH LAKE, OREG.**  
N4237.5—W11837.5/7.5

1968  
PHOTOINSPECTED 1979  
DMA 2269 II NW—SERIES V892

THIS MAP COMPLIES WITH NATIONAL MAP ACCURACY STANDARDS  
FOR SALE BY U. S. GEOLOGICAL SURVEY, DENVER, COLORADO 80225, OR RESTON, VIRGINIA 22092  
A FOLDER DESCRIBING TOPOGRAPHIC MAPS AND SYMBOLS IS AVAILABLE ON REQUEST

Apps. R-77836 & R-77837

R-77836  
-77837

RECEIVED  
JAN - 4 1995  
WATER RESOURCES DEPT.  
SALEM, OREGON