

SEC. 31 T6SR6W WM

POLK COUNTY

71140

SCALE 1" = 400'

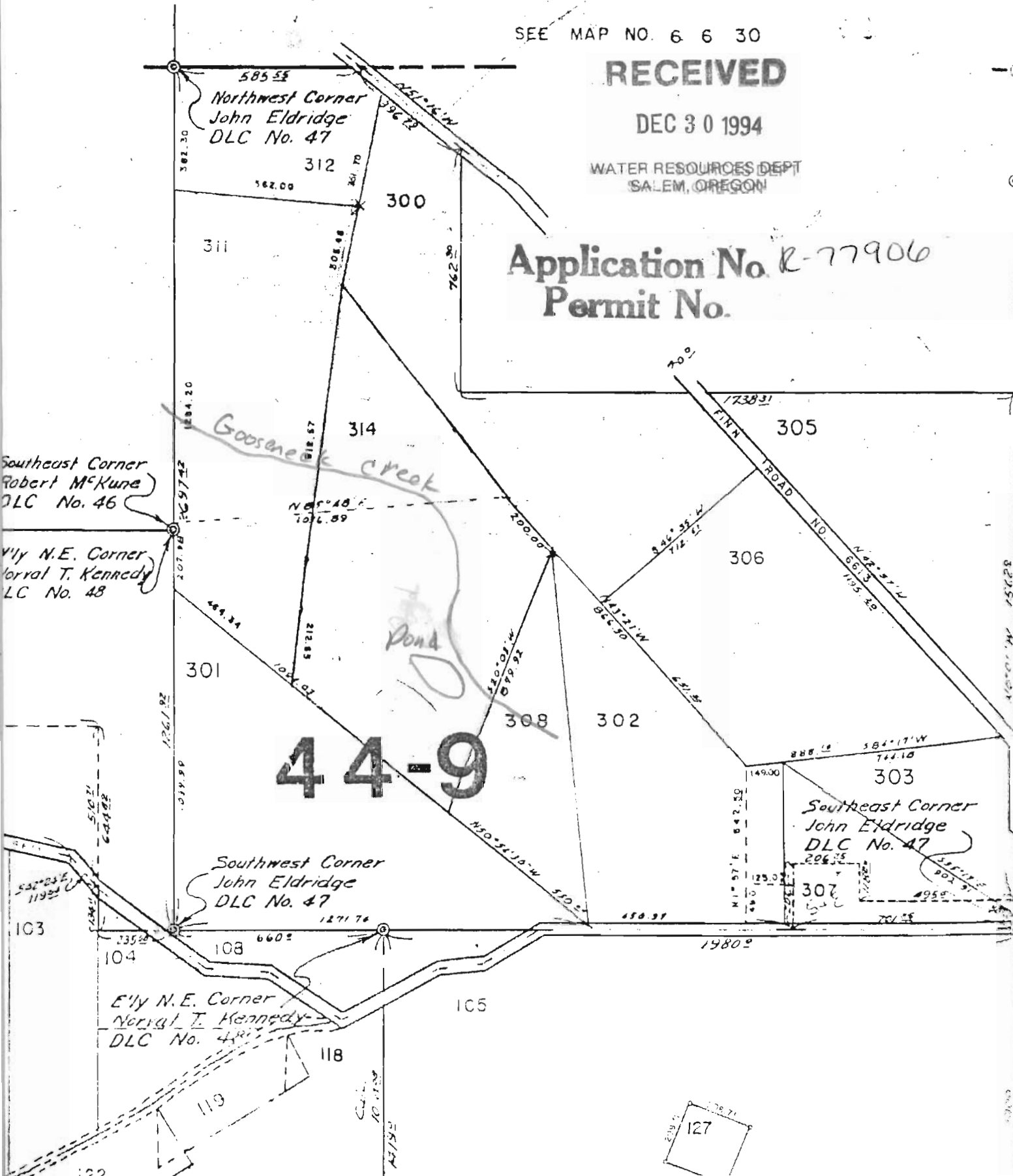
SEE MAP NO. 6 6 30

RECEIVED

DEC 30 1994

WATER RESOURCES DEPT
SALEM, OREGON

Application No. R-77906
Permit No.



44-9

Northwest Corner
John Eldridge
DLC No. 47

Southeast Corner
Robert McKune
DLC No. 46

Norral T. Kennedy
DLC No. 48

Southwest Corner
John Eldridge
DLC No. 47

Southeast Corner
John Eldridge
DLC No. 47

Norral T. Kennedy
DLC No. 48

127