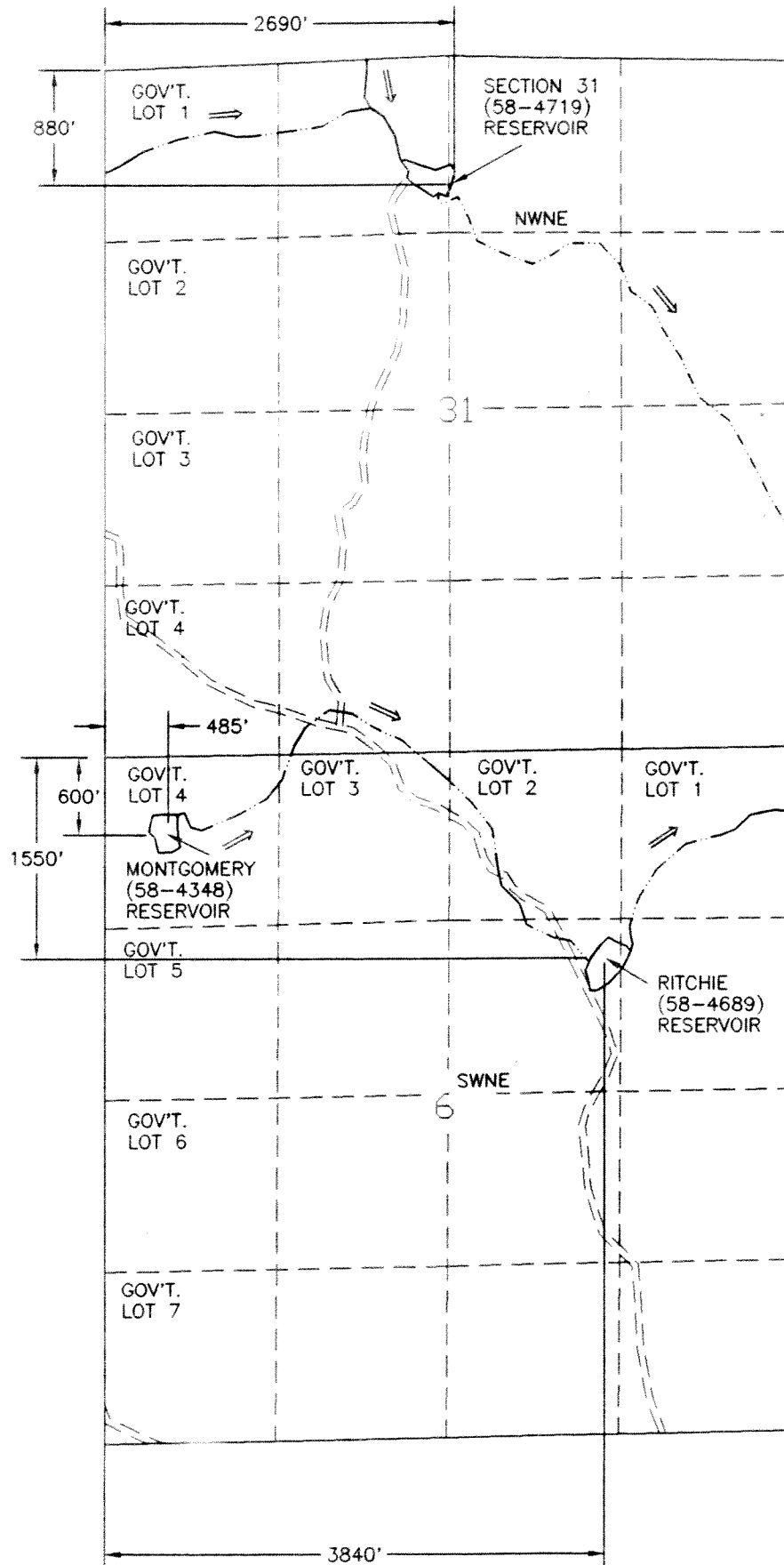


APPLICATION MAP FOR PERMIT TO CONSTRUCT THREE RESERVOIRS LOCATED IN THE KEATING NW, OREG. - 7 1/2' QUAD



RESERVOIR & JDR NO.	LEGAL DESCRIPTION	LAT. & LONG.	APP. NO.
SECTION 31 (58-4719) RESERVOIR	NW1/4 NE1/4 SECTION 31 T.7S., R.41E., W.M.	N: 44°55'01.4" W: 117°44'15.8"	R-78274
MONTGOMERY (58-4348) RESERVOIR	GOV'T. LOT 4, SECTION 6, T.8S., R.41E., W.M.	N: 44°54'12.3" W: 117°44'41.7"	R-78276
RITCHIE (58-4689) RESERVOIR	SW1/4 NE1/4, SECTION 6 T.8S., R.41E., W.M.	N: 44°54'06.3" W: 117°43'53.5"	R-78275

- LEGEND
- RESERVOIR
 - ROAD
 - CHANNEL



THIS MAP IS FOR THE PURPOSE OF LOCATING
A WATER RIGHT AND IS NOT INTENDED TO
PROVIDE LEGAL DIMENSIONS FOR LOCATION
OF PROPERTY BOUNDARIES.



RECEIVED
OCT 01 2008
WATER RESOURCES DEPT
SALEM, OREGON

UNITED STATES DEPARTMENT OF THE INTERIOR BUREAU OF LAND MANAGEMENT DIVISION OF OPERATIONS VALE DISTRICT	
RESERVOIRS LOCATED IN KEATING NW QUAD	
DESIGNED	
REVIEWED	
APPROVED	
DRAWN: CG	SCALE: 1"=1320'
DATE: 02/27/96	SHEET 1 OF 1
DRAWING NO. OR-03-9172.45-843	