

Application No. R-7871d
Permit No.

Henry H. H. H.

Gal. 1000000

R-7871d

Scale 1-24000

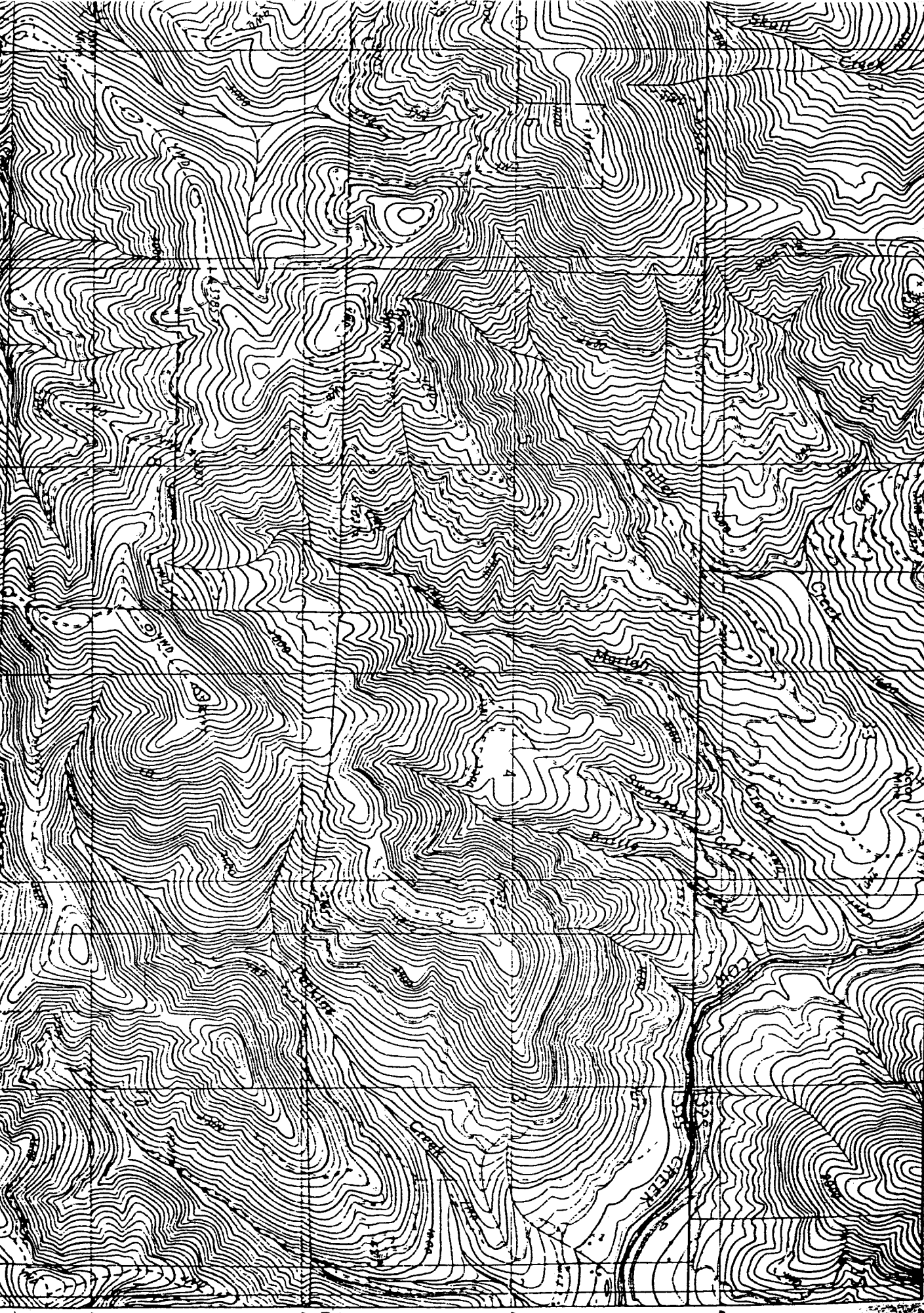
MOUNT REUBEN QUADRANGLE
OREGON
7.5 MINUTE SERIES (TOPOGRAPHIC)

CERTIFICATE NO. 71365

63 64 65 66 67 68 69 70 71 72 73 74 75

1190 000 FEET

123° 38'



400 000
FEET

1729

1730

1731

1732

1733

1734

1735

1736

1737

1738

1739

1740

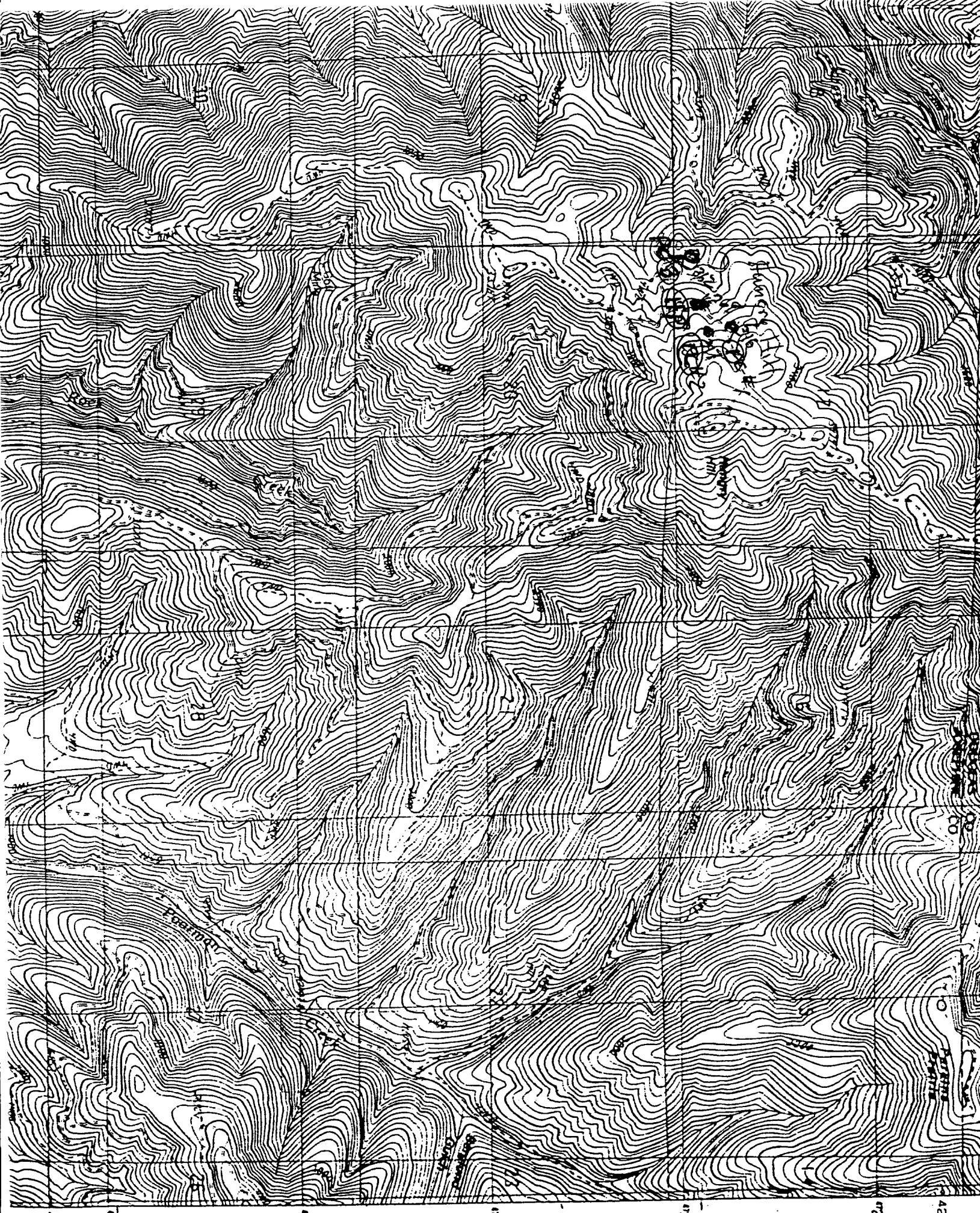
1741

1742

1743

1744

1745



40° 1724 1725 1726 1727 1728 42° 30'