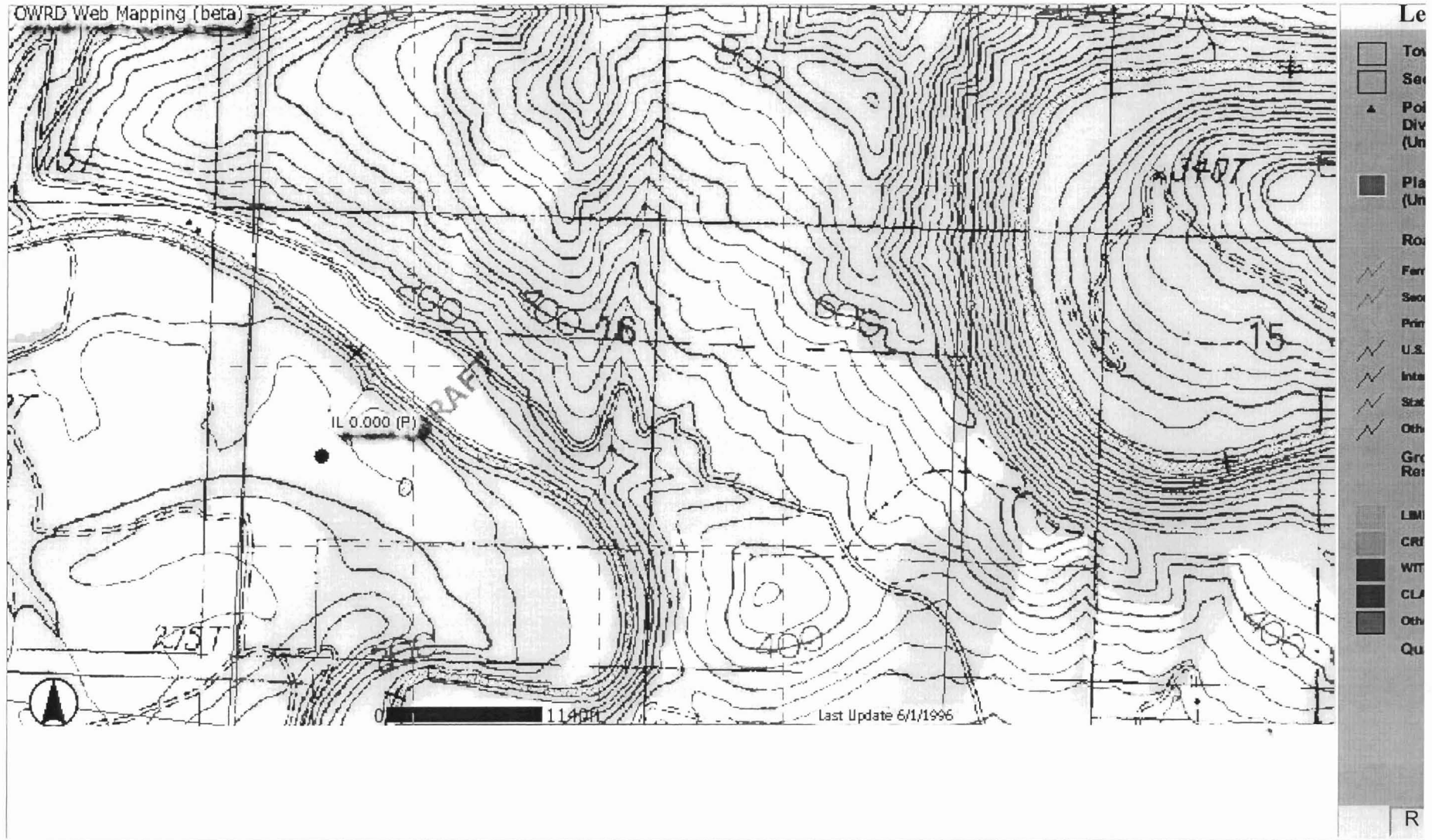


R-79527 Section 16, T22S, R7W, W.M.



SECTION 16 T.22S. R.7W. W.M.
DOUGLAS COUNTY

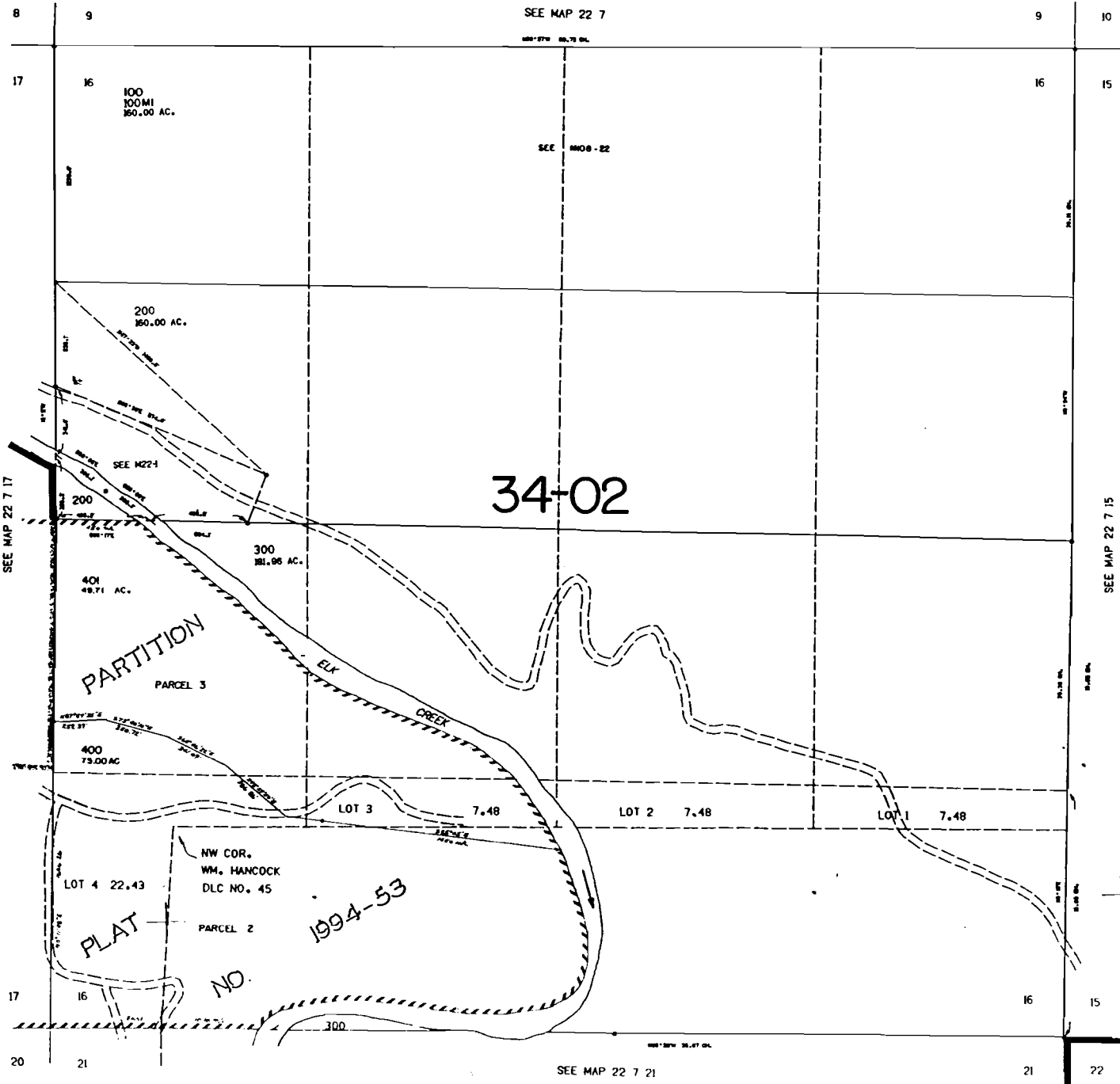
REVISED ON
5-7-96

22 7 16

THIS MAP WAS PREPARED FOR
ASSESSMENT PURPOSE ONLY.

1"=400'

SCALE 1"=9600'



RECEIVED
JUN 13 1996
DEPT. OF REVENUE

SEE MAP 22 7 21