

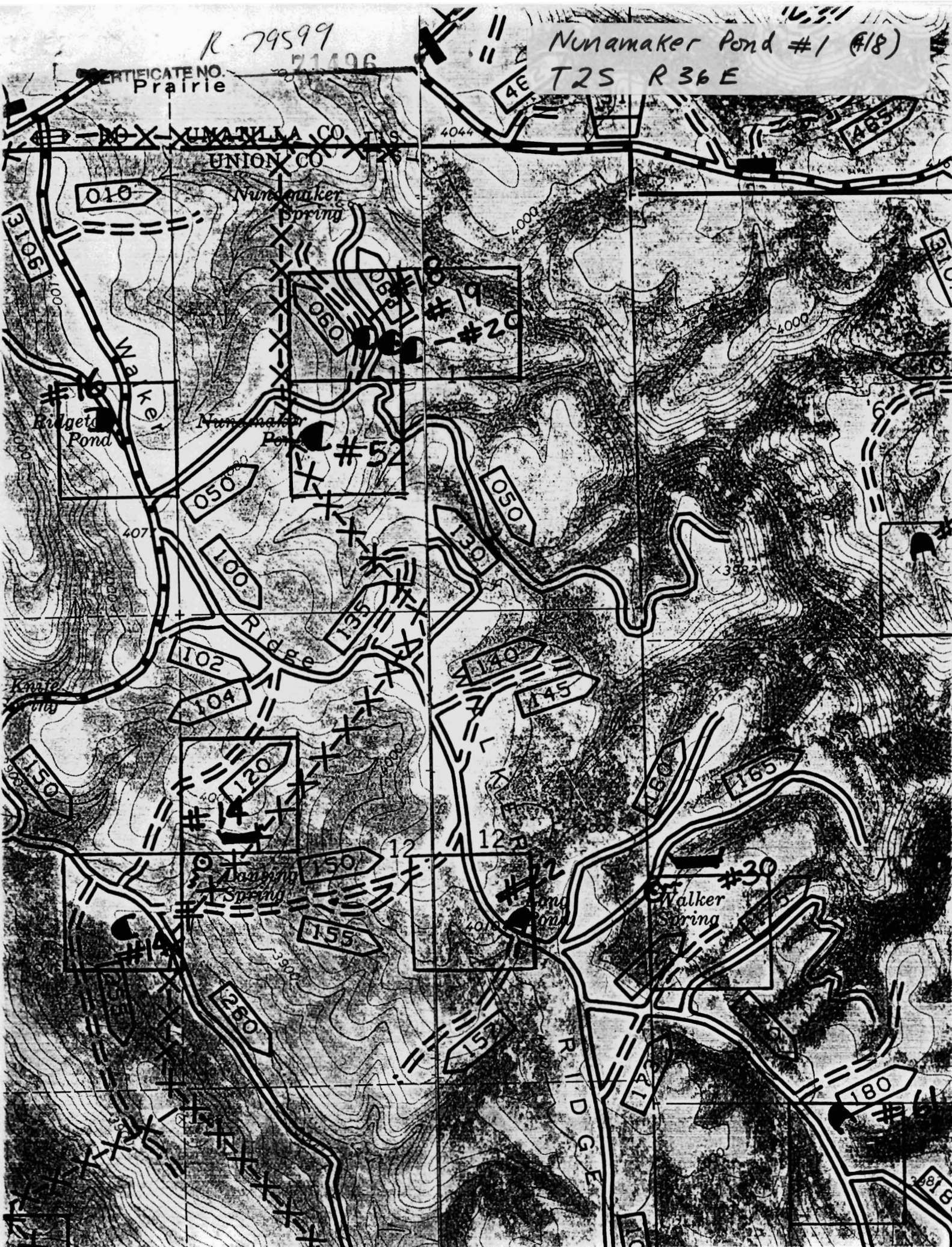
R. 79599

71496

Nunamaker Pond #1 (#18)

T2S R36E

CERTIFICATE NO.  
Prairie

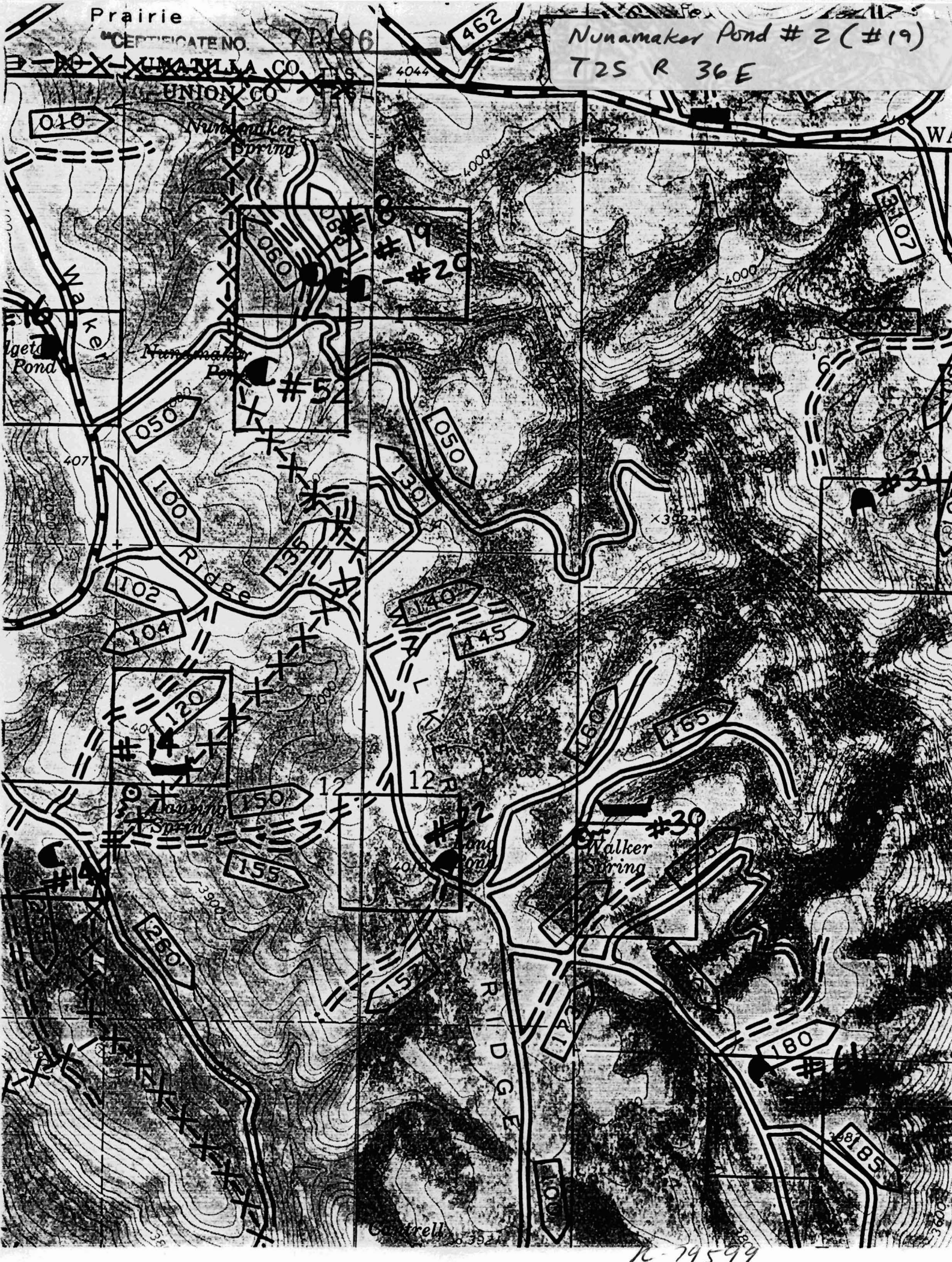


Prairie

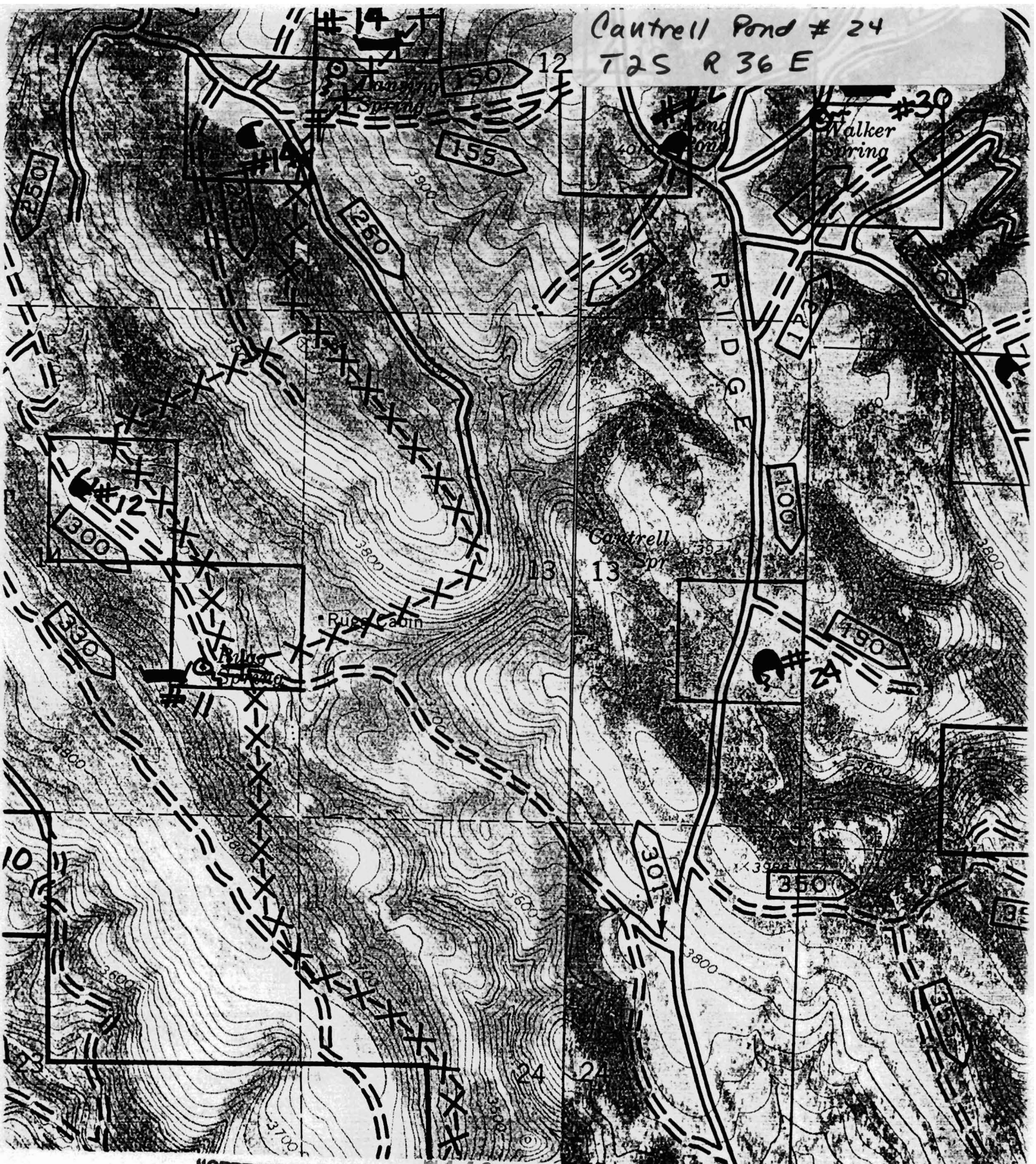
CERTIFICATE NO. 1196

Nunamaker Pond # 2 (#19)  
T2S R 36E

XUNAWILLA CO. I.T.S.  
UNION CO. I.T.S.



Cantrell Pond # 24  
T 2 S R 36 E



"CERTIFICATE NO. 71496

Application No. R 79599  
Permit No.

Application No. R-79599

Whitman Pond #36

T2S R37E

Permit No.

"CERTIFICATE NO.

71496

