

This map was prepared for assessment purposes only.

SECTION 10 T.29S. R. 6 W. W.M.  
DOUGLAS COUNTY

Application No. R-788 79630  
Permit No.

29 6 10

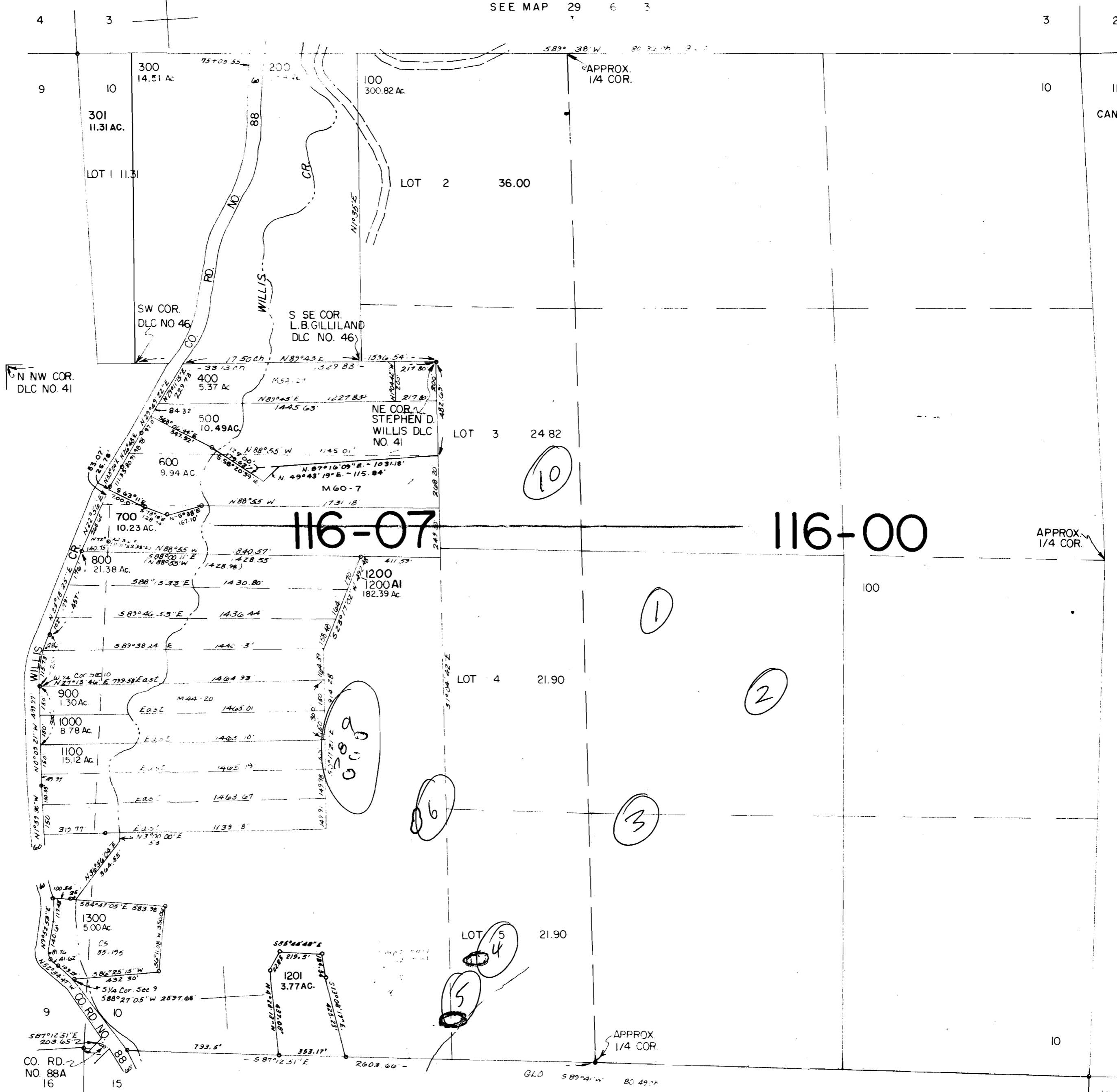
1" = 400'

1500

SEE MAP 29 6 3

SEE MAP 29 6 9

SEE MAP 29 6 11



SEE MAP 29 6 15

RECEIVED  
JAN - 4 1995  
WATER RESOURCES DEP  
SALEM, OREGON

29 6 10

1,230,000